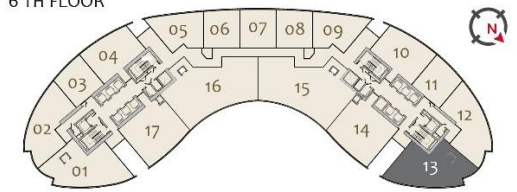



IMPERIAL AVENUE
 DOWNTOWN DUBAI

6 TH FLOOR



**THREE BEDROOM VILLA (TYPE 3BV)
LOWER LEVEL**

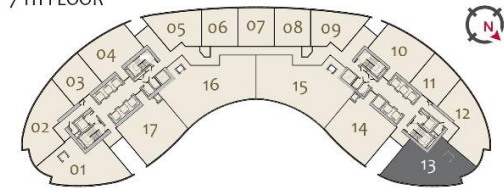
VILLA #	VILLA AREA		DECK AREA		TOTAL	
613	275.85 SQM	2,969.00 SQFT	69.68 SQM	750.00 SQFT	345.54 SQM	3,719.00 SQFT

Drawings are provided by our consultants. All dimensions, features and amenities are approximate at time of printing. Actual area may vary from stated area. Drawings not to scale E&OE. The developer reserves the right to make revisions to the floor plans and any features, materials and dimensions mentioned without further notice.




IMPERIAL AVENUE
 DOWNTOWN DUBAI

7 TH FLOOR



**THREE BEDROOM VILLA (TYPE S-3BV-6)
UPPER LEVEL**

VILLA #	VILLA AREA		DECK AREA		TOTAL
613	275.85 SQM	2,969.00 SQFT	69.68 SQM	750.00 SQFT	345.54 SQM 3,719.00 SQFT

Drawings are provided by our consultants. All dimensions, features and amenities are approximate at time of printing. Actual area may vary from stated area. Drawings not to scale E&OE. The developer reserves the right to make revisions to the floor plans and any features, materials and dimensions mentioned without further notice.



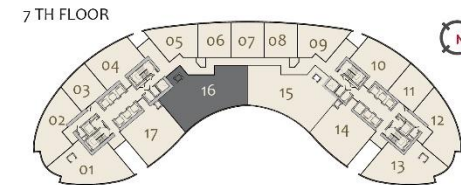
**FIVE BEDROOM VILLA (TYPE T-5BV-3)
LOWER LEVEL**

VILLA #	VILLA AREA		DECK AREA			TOTAL		
616	421.82	SQM	4,540.00	SQFT	129.89	SQM	5,938.00	SQFT

Drawings are provided by our consultants. All dimensions, features and amenities are approximate at time of printing. Actual area may vary from stated area. Drawings not to scale E&OE. The developer reserves the right to make revisions to the floor plans and any features, materials and dimensions mentioned without further notice.



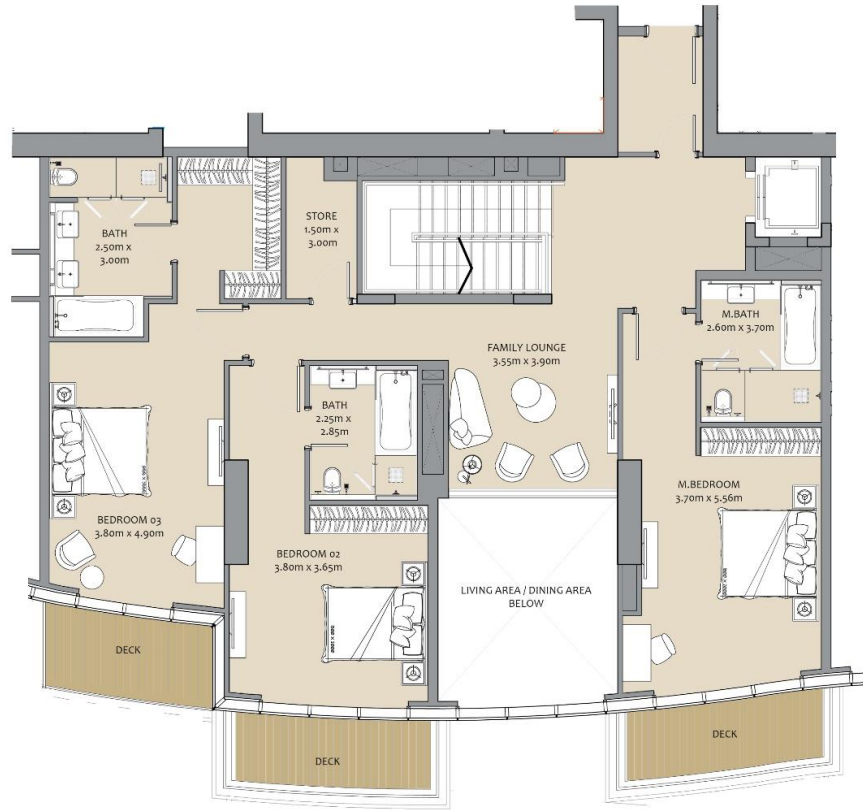

IMPERIAL AVENUE
 DOWNTOWN DUBAI



**FIVE BEDROOM VILLA (TYPE T-5BV-3)
UPPER LEVEL**

VILLA #	VILLA AREA		DECK AREA		TOTAL							
616	421.82	SQM	4,540.00	SQFT	129.89	SQM	1,398.00	SQFT	551.70	SQM	5,938.00	SQFT

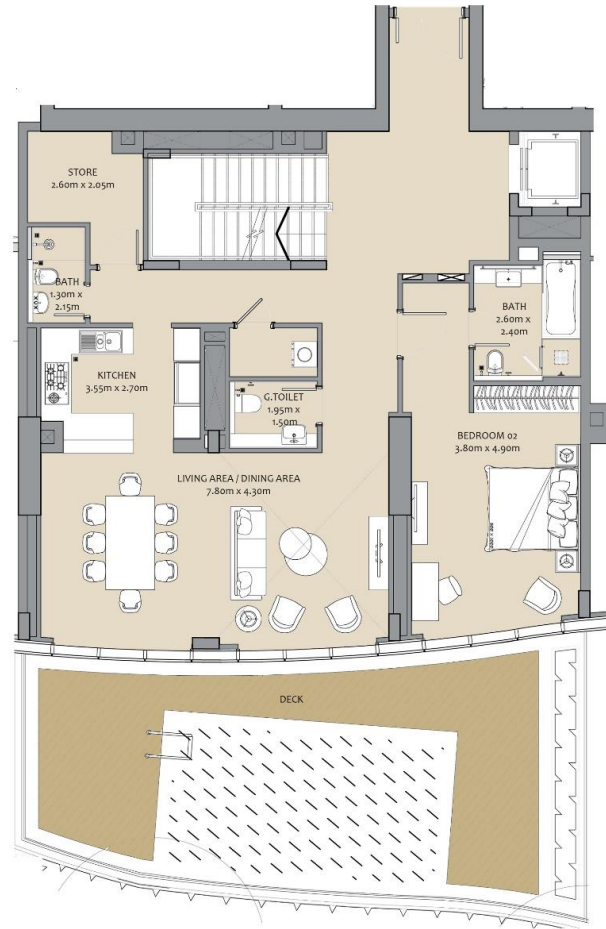
Drawings are provided by our consultants. All dimensions, features and amenities are approximate at time of printing. Actual area may vary from stated area. Drawings not to scale E&OE. The developer reserves the right to make revisions to the floor plans and any features, materials and dimensions mentioned without further notice.



**FOUR BEDROOM VILLA (TYPE T-4BV-2)
UPPER LEVEL**

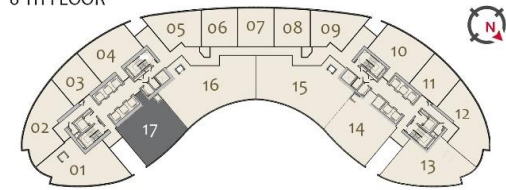
VILLA #	VILLA AREA		DECK AREA		TOTAL
617	306.47 SQM	3,298.49 SQFT	80.93 SQM	871.02 SQFT	387.39 SQM 4,170.00 SQFT

Drawings are provided by our consultants. All dimensions, features and amenities are approximate at time of printing. Actual area may vary from stated area. Drawings not to scale E&OE. The developer reserves the right to make revisions to the floor plans and any features, materials and dimensions mentioned without further notice.




IMPERIAL AVENUE
 DOWNTOWN DUBAI

6 TH FLOOR



**FOUR BEDROOM VILLA (TYPE T-4BV-2)
LOWER LEVEL**

VILLA #	VILLA AREA		DECK AREA		TOTAL							
617	306.47	SQM	3,298.49	SQFT	80.93	SQM	871.02	SQFT	387.39	SQM	4,170.00	SQFT

Drawings are provided by our consultants. All dimensions, features and amenities are approximate at time of printing. Actual area may vary from stated area. Drawings not to scale E&OE. The developer reserves the right to make revisions to the floor plans and any features, materials and dimensions mentioned without further notice.



TWO BEDROOM (TYPE S-2B-B)

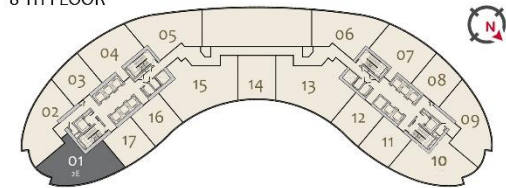
APARTMENT #	APARTMENT AREA		DECK AREA		TOTAL	
710	112.70 SQM	1,213.00 SQFT	6.88 SQM	74.00 SQFT	119.58 SQM	1,287.00 SQFT

Drawings are provided by our consultants. All dimensions, features and amenities are approximate at time of printing. Actual area may vary from stated area. Drawings not to scale E&OE. The developer reserves the right to make revisions to the floor plans and any features, materials and dimensions mentioned without further notice.




IMPERIAL AVENUE
 DOWNTOWN DUBAI

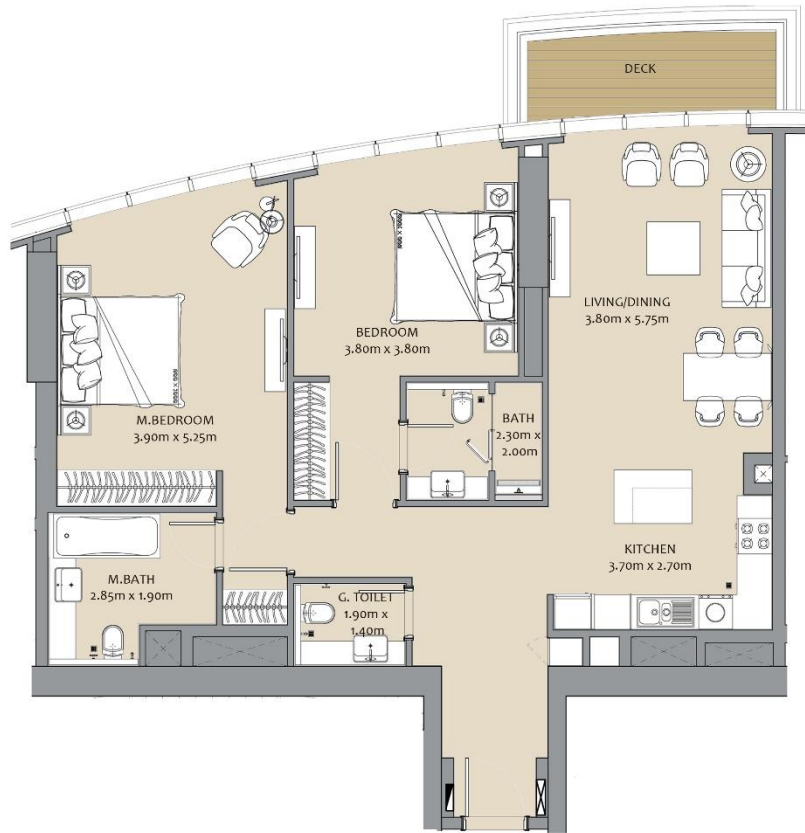
8 TH FLOOR



TWO BEDROOM (TYPE T-2B-E)

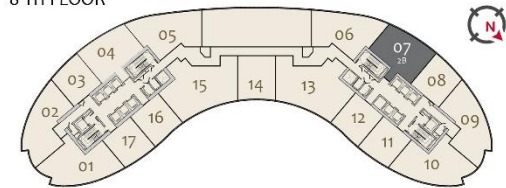
APARTMENT #	APARTMENT AREA		DECK AREA		TOTAL	
801	141.60 SQM	1,524.00 SQFT	28.52 SQM	307.00 SQFT	170.12 SQM	1,831.00 SQFT

Drawings are provided by our consultants. All dimensions, features and amenities are approximate at time of printing. Actual area may vary from stated area. Drawings not to scale E&OE. The developer reserves the right to make revisions to the floor plans and any features, materials and dimensions mentioned without further notice.




IMPERIAL AVENUE
 DOWNTOWN DUBAI

8 TH FLOOR



APARTMENT #	APARTMENT AREA		DECK AREA		TOTAL							
807	112.70	SQM	1,213.00	SQFT	6.88	SQM	74.00	SQFT	119.58	SQM	1,287.00	SQFT

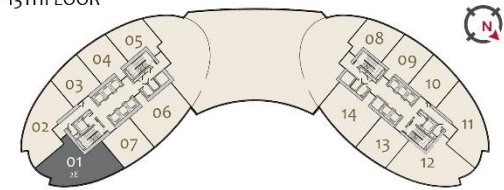
TWO BEDROOM (TYPE S-2B-B)

Drawings are provided by our consultants. All dimensions, features and amenities are approximate at time of printing. Actual area may vary from stated area. Drawings not to scale E&OE. The developer reserves the right to make revisions to the floor plans and any features, materials and dimensions mentioned without further notice.




IMPERIAL AVENUE
 DOWNTOWN DUBAI

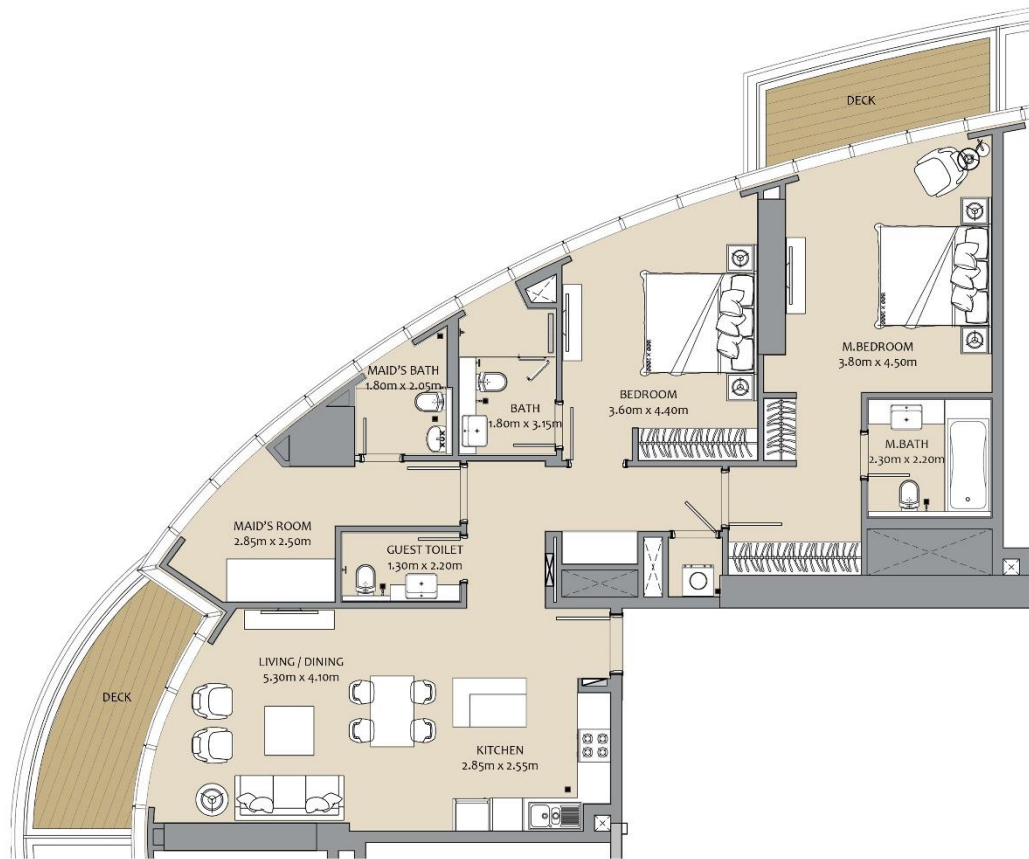
13TH FLOOR



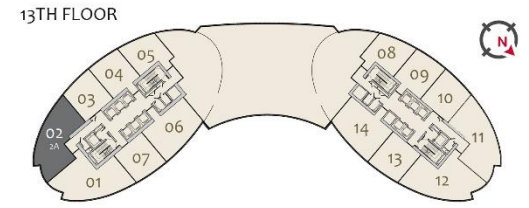
TWO BEDROOM (TYPE T-2B-E)

APARTMENT #	APARTMENT AREA		DECK AREA		TOTAL	
1301	141.60 SQM	1,524.00 SQFT	15.61 SQM	168.00 SQFT	157.21 SQM	1,691.00 SQFT

Drawings are provided by our consultants. All dimensions, features and amenities are approximate at time of printing. Actual area may vary from stated area. Drawings not to scale E&OE. The developer reserves the right to make revisions to the floor plans and any features, materials and dimensions mentioned without further notice.



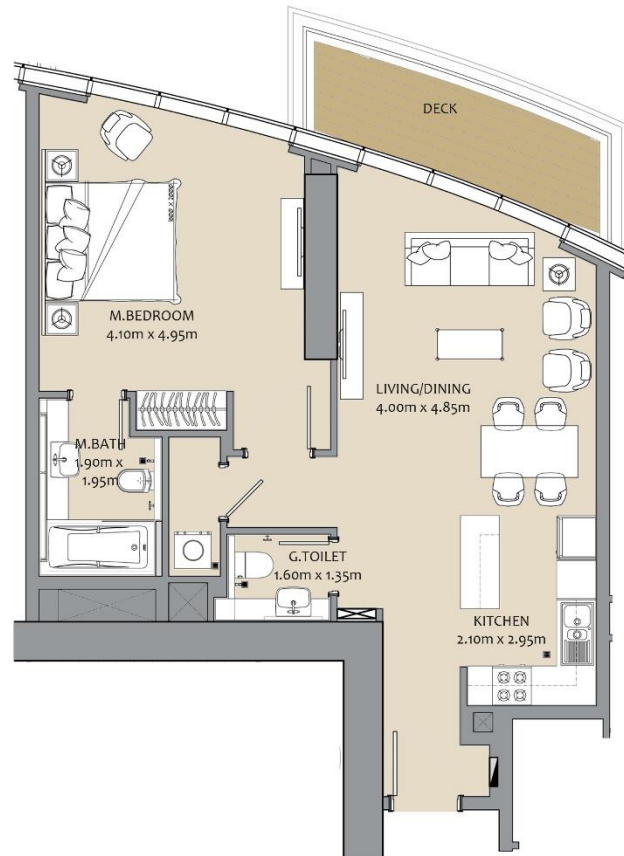

IMPERIAL AVENUE
 DOWNTOWN DUBAI



TWO BEDROOM (TYPE T-2B-A)

APARTMENT #	APARTMENT AREA		DECK AREA		TOTAL	
1302	125.99 SQM	1,356.00 SQFT	15.61 SQM	168.00 SQFT	141.60 SQM	1,524.00 SQFT

Drawings are provided by our consultants. All dimensions, features and amenities are approximate at time of printing. Actual area may vary from stated area. Drawings not to scale E&OE. The developer reserves the right to make revisions to the floor plans and any features, materials and dimensions mentioned without further notice.



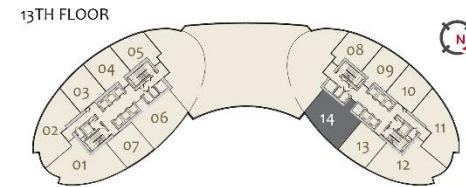
ONE BEDROOM (TYPE T-1B-H)

APARTMENT #	APARTMENT AREA	DECK AREA	TOTAL
1305	72.19 SQM	7.62 SQM	79.81 SQM
	777.00 SQFT	82.00 SQFT	859.00 SQFT

Drawings are provided by our consultants. All dimensions, features and amenities are approximate at time of printing. Actual area may vary from stated area. Drawings not to scale E&OE. The developer reserves the right to make revisions to the floor plans and any features, materials and dimensions mentioned without further notice.




IMPERIAL AVENUE
 DOWNTOWN DUBAI

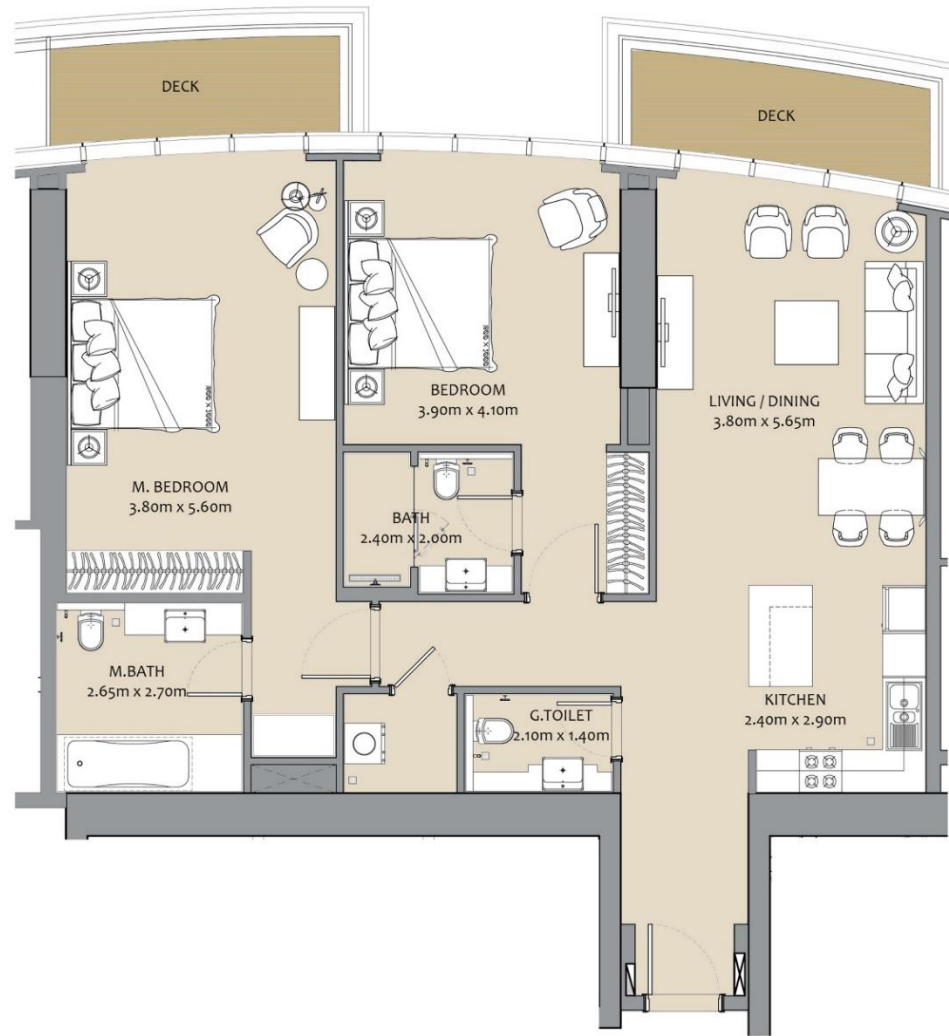


TWO BEDROOM (TYPE S-2B-B-1)

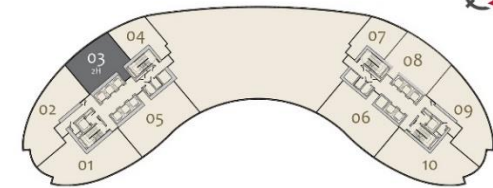
APARTMENT #	APARTMENT AREA		DECK AREA		TOTAL							
1314	116.14	SQM	1,250.00	SQFT	6.60	SQM	71.00	SQFT	122.74	SQM	1,321.00	SQFT

Drawings are provided by our consultants. All dimensions, features and amenities are approximate at time of printing. Actual area may vary from stated area. Drawings not to scale E&OE. The developer reserves the right to make revisions to the floor plans and any features, materials and dimensions mentioned without further notice.

IMPERIAL AVENUE



14 TH FLOOR



APARTMENT #	APARTMENT AREA		DECK AREA		TOTAL	
1403	121.34 SQM	1,306.00 SQFT	13.38 SQM	144.00 SQFT	134.72 SQM	1,450.00 SQFT

TWO BEDROOM (TYPE T-2B - H)

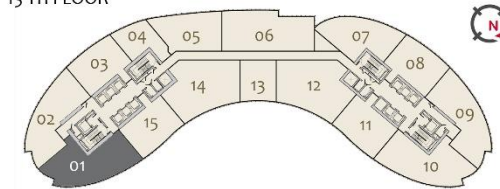
Drawings are provided by our consultants. All dimensions, features and amenities are approximate at time of printing. Actual area may vary from stated area. Drawings not to scale E&OE. The developer reserves the right to make revisions to the floor plans and any features, materials and dimensions mentioned without further notice.



IMPERIAL AVENUE

DOWNTOWN DUBAI

15 TH FLOOR



APARTMENT #	APARTMENT AREA		DECK AREA		TOTAL	
1501	175.23 SQM	1,886.00 SQFT	15.24 SQM	164.00 SQFT	190.47 SQM	2,050.00 SQFT

THREE BEDROOM (TYPE T-3B-B-1)

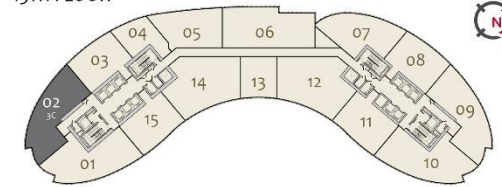
Drawings are provided by our consultants. All dimensions, features and amenities are approximate at time of printing. Actual area may vary from stated area. Drawings not to scale E&OE. The developer reserves the right to make revisions to the floor plans and any features, materials and dimensions mentioned without further notice.



IMPERIAL AVENUE

DOWNTOWN DUBAI

15TH FLOOR



THREE BEDROOM (TYPE T-3B-C-1)

APARTMENT #	APARTMENT AREA		DECK AREA		TOTAL	
1502	163.34 SQM	1,758.00 SQFT	15.24 SQM	164.00 SQFT	178.57 SQM	1,922.00 SQFT

Drawings are provided by our consultants. All dimensions, features and amenities are approximate at time of printing. Actual area may vary from stated area. Drawings not to scale E&OE. The developer reserves the right to make revisions to the floor plans and any features, materials and dimensions mentioned without further notice.



TWO BEDROOM (TYPE S-2B-J)

APARTMENT #	APARTMENT AREA		DECK AREA		TOTAL							
1507	139.81	SQM	1,504.79	SQFT	21.42	SQM	230.56	SQFT	161.23	SQM	1,735.00	SQFT

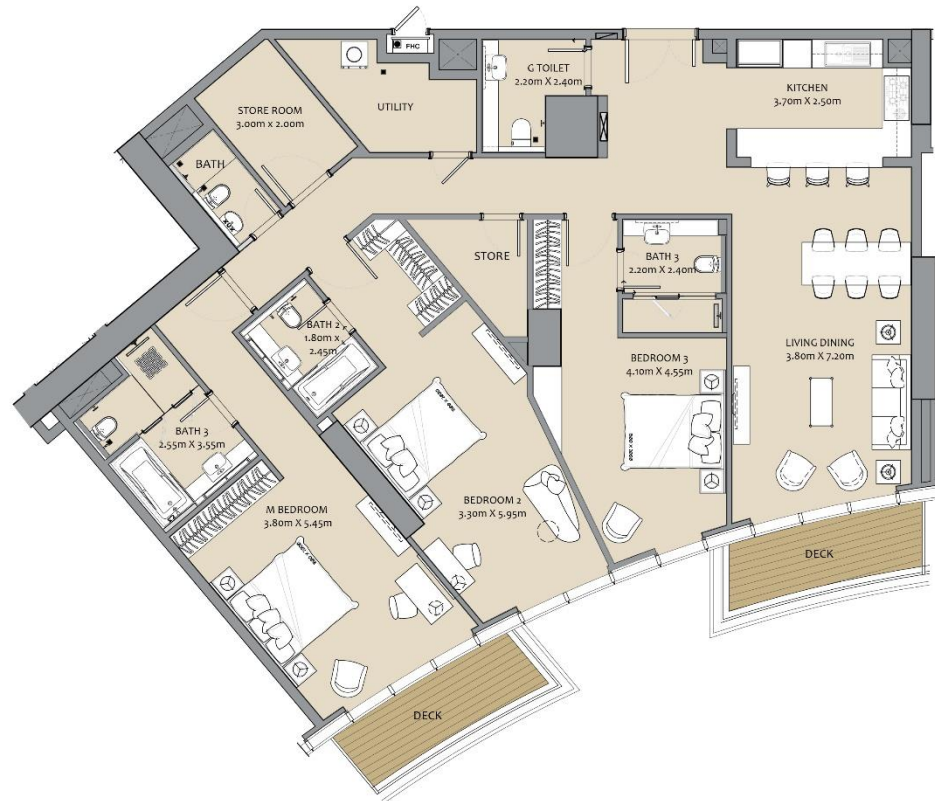
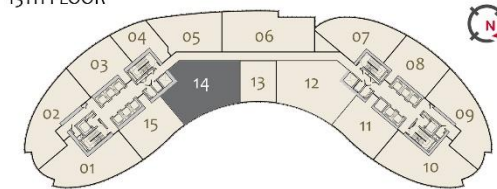
Drawings are provided by our consultants. All dimensions, features and amenities are approximate at time of printing. Actual area may vary from stated area. Drawings not to scale E&OE. The developer reserves the right to make revisions to the floor plans and any features, materials and dimensions mentioned without further notice.



IMPERIAL AVENUE

DOWNTOWN DUBAI

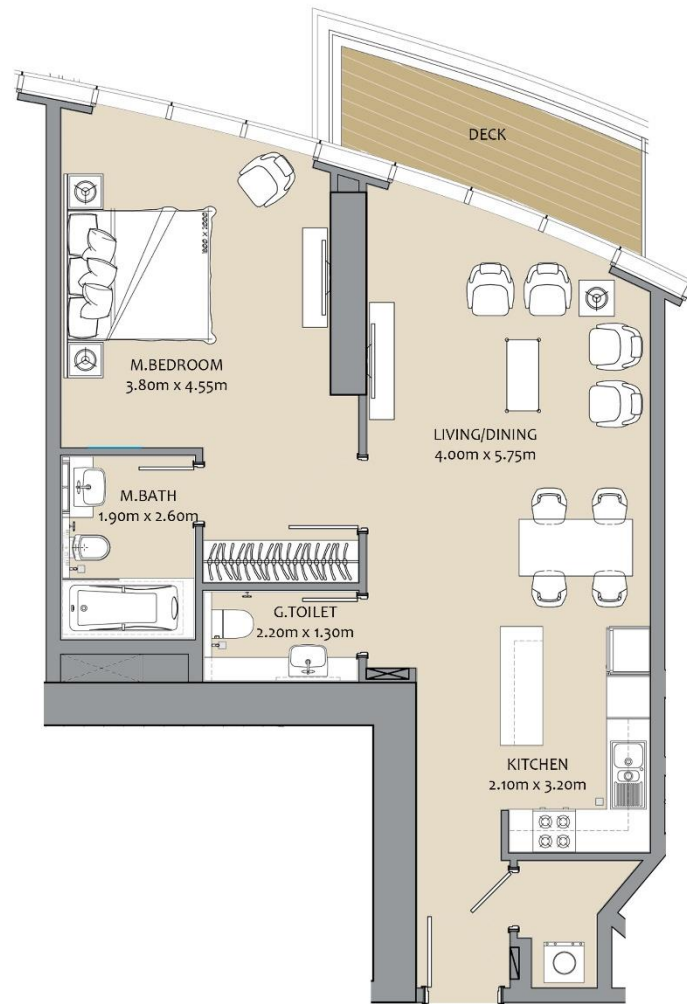
15TH FLOOR



APARTMENT #	APARTMENT AREA		DECK AREA		TOTAL			
1514	189.82	SQM	13.47	SQFT	203.29	SQM	2,188.00	SQFT

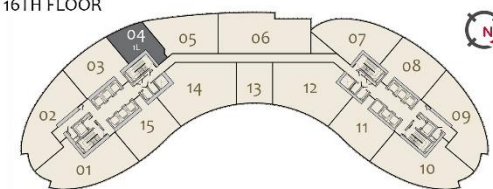
THREE BEDROOM (TYPE T-3B-F)

Drawings are provided by our consultants. All dimensions, features and amenities are approximate at time of printing. Actual area may vary from stated area. Drawings not to scale E&OE. The developer reserves the right to make revisions to the floor plans and any features, materials and dimensions mentioned without further notice.




IMPERIAL AVENUE
 DOWNTOWN DUBAI

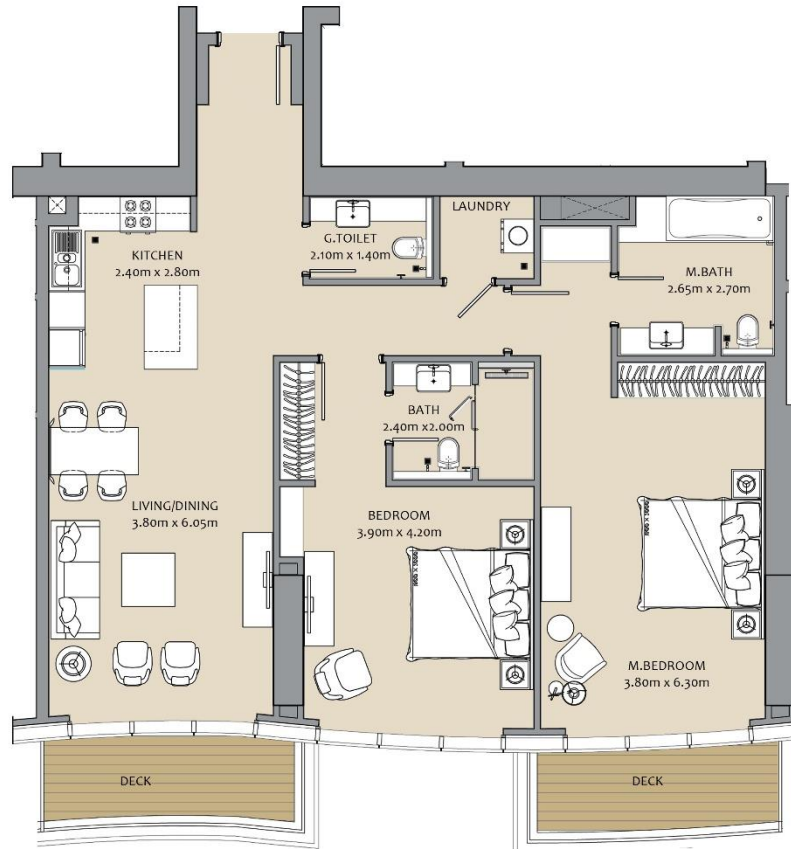
16TH FLOOR



ONE BEDROOM (TYPE T-1B-L)

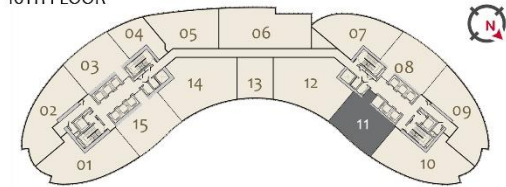
APARTMENT #	APARTMENT AREA		DECK AREA		TOTAL	
1604	77.67	SQM	836.00	SQFT	7.15	SQM
					77.00	SQFT
					84.83	SQM
					913.00	SQFT

Drawings are provided by our consultants. All dimensions, features and amenities are approximate at time of printing. Actual area may vary from stated area. Drawings not to scale E&OE. The developer reserves the right to make revisions to the floor plans and any features, materials and dimensions mentioned without further notice.




IMPERIAL AVENUE
 DOWNTOWN DUBAI

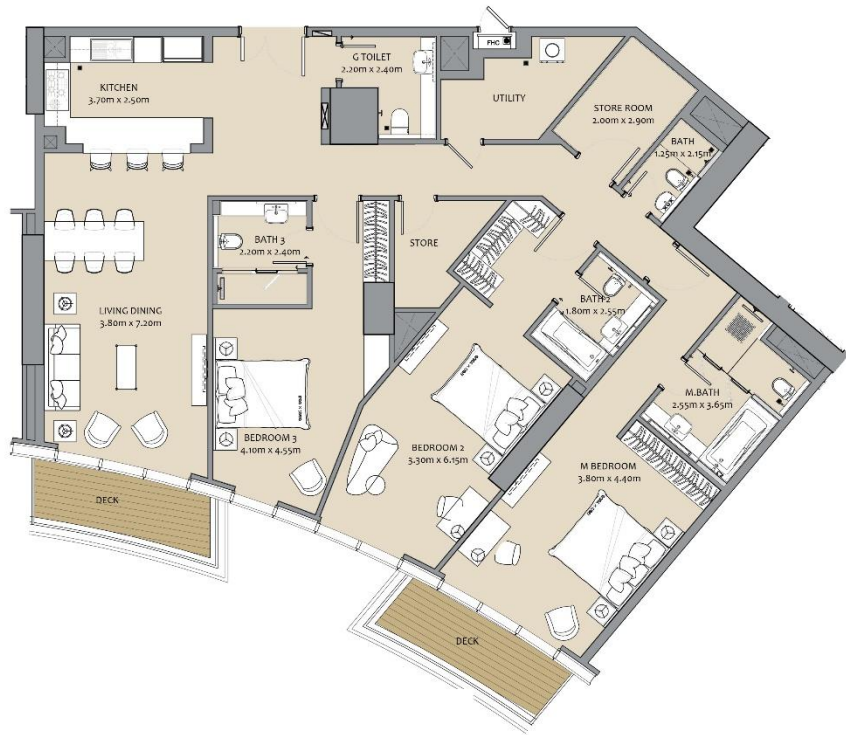
16TH FLOOR



TWO BEDROOM (TYPE S-2B-H-1)

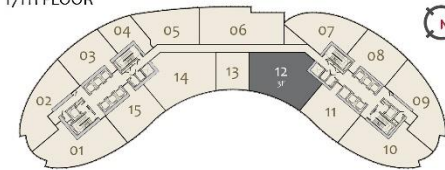
APARTMENT #	APARTMENT AREA		DECK AREA		TOTAL	
1611	121.71 SQM	1,310.00 SQFT	13.19 SQM	142.00 SQFT	134.91 SQM	1,452.00 SQFT

Drawings are provided by our consultants. All dimensions, features and amenities are approximate at time of printing. Actual area may vary from stated area. Drawings not to scale E&OE. The developer reserves the right to make revisions to the floor plans and any features, materials and dimensions mentioned without further notice.




IMPERIAL AVENUE
 DOWNTOWN DUBAI

17TH FLOOR



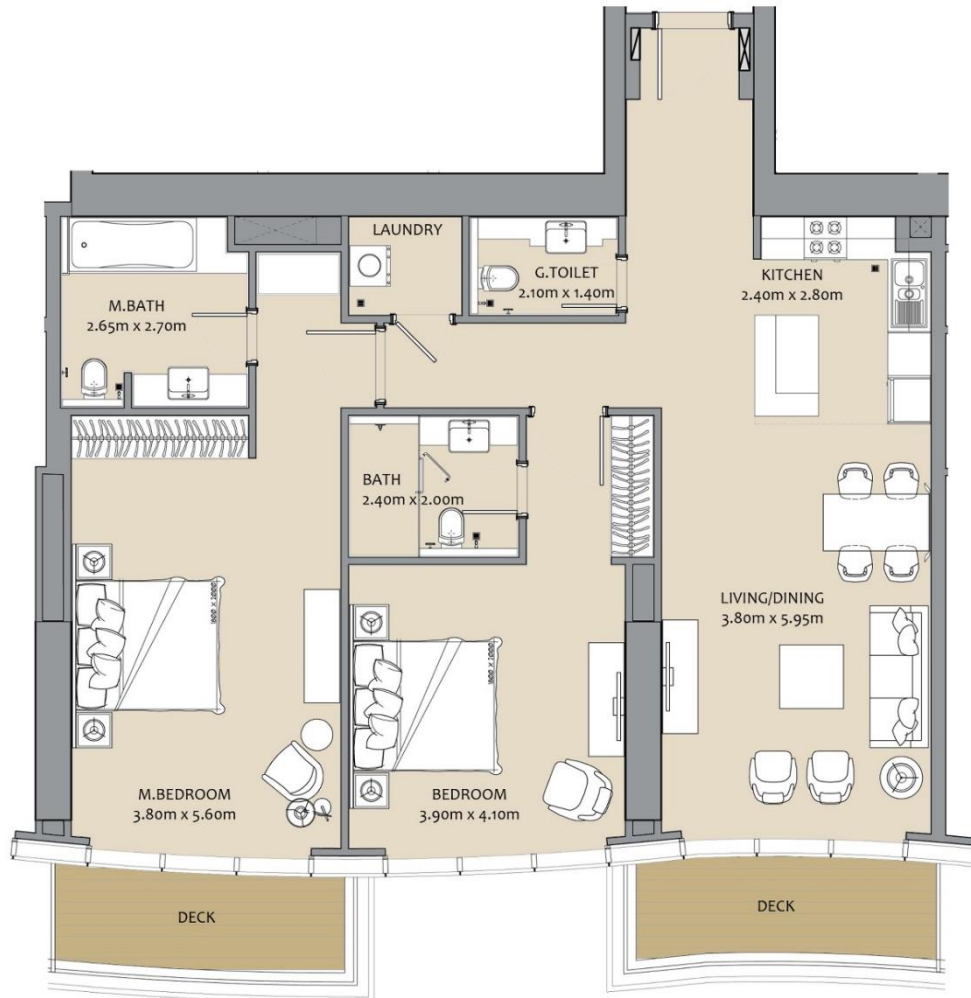
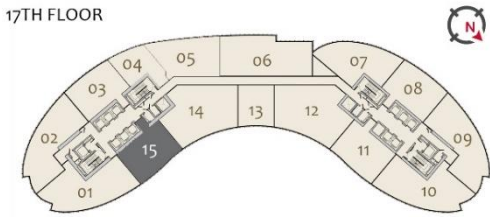
THREE BEDROOM (TYPE S-3B-F)

APARTMENT #	APARTMENT AREA		DECK AREA		TOTAL	
1712	190.10 SQM	2,046.00 SQFT	13.47 SQM	145.00 SQFT	203.57 SQM	2,191.00 SQFT

Drawings are provided by our consultants. All dimensions, features and amenities are approximate at time of printing. Actual area may vary from stated area. Drawings not to scale E&OE. The developer reserves the right to make revisions to the floor plans and any features, materials and dimensions mentioned without further notice.

IMPERIAL AVENUE

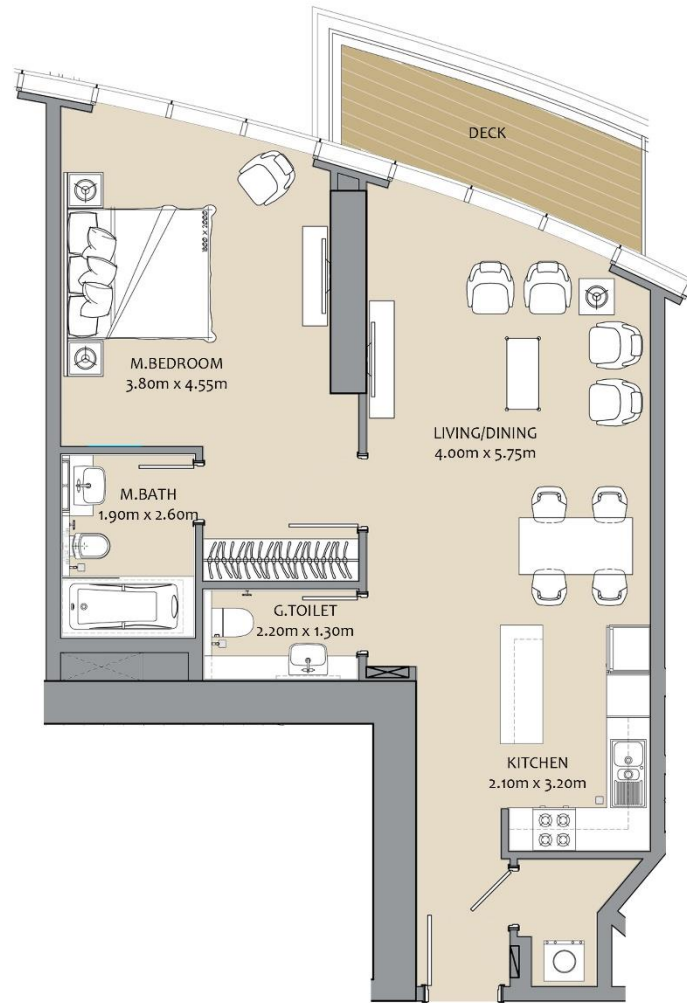
17TH FLOOR



APARTMENT #	APARTMENT AREA		DECK AREA		TOTAL							
1715	121.06	SQM	1,303.00	SQFT	13.19	SQM	142.00	SQFT	134.26	SQM	1,445.00	SQFT

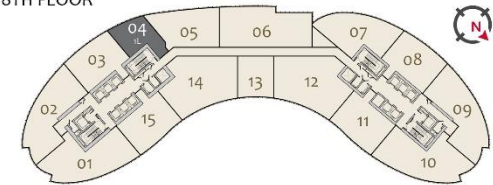
TWO BEDROOM (TYPE T-2B - H-1)

Drawings are provided by our consultants. All dimensions, features and amenities are approximate at time of printing. Actual area may vary from stated area. Drawings not to scale E&OE. The developer reserves the right to make revisions to the floor plans and any features, materials and dimensions mentioned without further notice.




IMPERIAL AVENUE
 DOWNTOWN DUBAI

18TH FLOOR



ONE BEDROOM (TYPE T-1B-L)

APARTMENT #	APARTMENT AREA		DECK AREA		TOTAL							
1804	77.67	SQM	836.00	SQFT	7.15	SQM	77.00	SQFT	84.83	SQM	913.00	SQFT

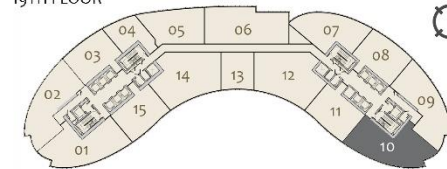
Drawings are provided by our consultants. All dimensions, features and amenities are approximate at time of printing. Actual area may vary from stated area. Drawings not to scale E&OE. The developer reserves the right to make revisions to the floor plans and any features, materials and dimensions mentioned without further notice.



IMPERIAL AVENUE

DOWNTOWN DUBAI

19TH FLOOR



APARTMENT #	APARTMENT AREA		DECK AREA		TOTAL
1910	176.81	SQM	1,903.00	SQFT	15.24 SQM 164.00 SQFT 192.05 SQM 2,067.00 SQFT

THREE BEDROOM (TYPE S-3B-B-1)

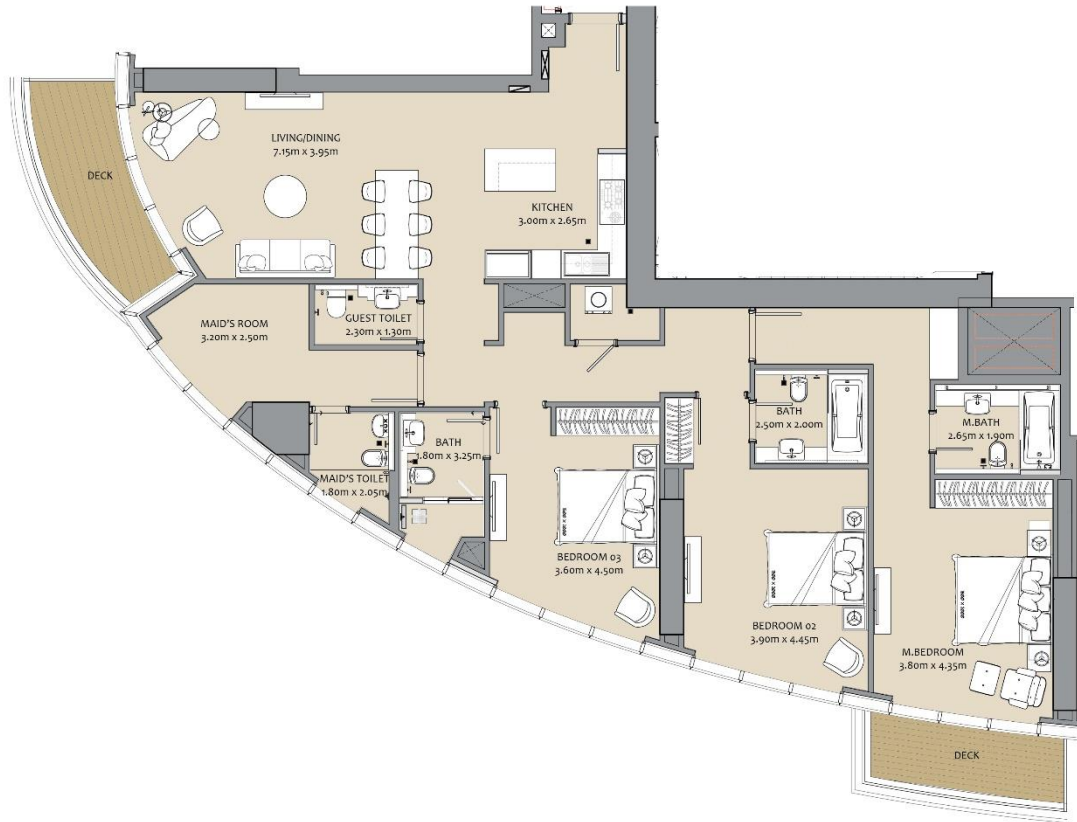
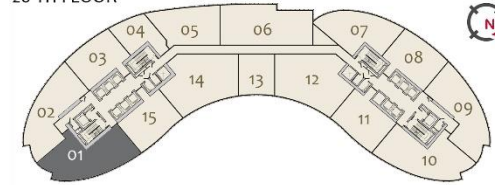
Drawings are provided by our consultants. All dimensions, features and amenities are approximate at time of printing. Actual area may vary from stated area. Drawings not to scale E&OE. The developer reserves the right to make revisions to the floor plans and any features, materials and dimensions mentioned without further notice.



IMPERIAL AVENUE

DOWNTOWN DUBAI

20 TH FLOOR



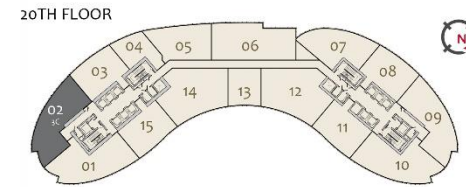
APARTMENT #	APARTMENT AREA		DECK AREA		TOTAL							
2001	175.23	SQM	1,886.00	SQFT	15.24	SQM	164.00	SQFT	190.47	SQM	2,050.00	SQFT

THREE BEDROOM (TYPE T- 3B-B-1)

Drawings are provided by our consultants. All dimensions, features and amenities are approximate at time of printing. Actual area may vary from stated area. Drawings not to scale E&OE. The developer reserves the right to make revisions to the floor plans and any features, materials and dimensions mentioned without further notice.




IMPERIAL AVENUE
 DOWNTOWN DUBAI



THREE BEDROOM (TYPE T-3B-C-1)

APARTMENT #	APARTMENT AREA		DECK AREA		TOTAL	
2002	163.34 SQM	1,758.00 SQFT	15.24 SQM	164.00 SQFT	178.57 SQM	1,922.00 SQFT

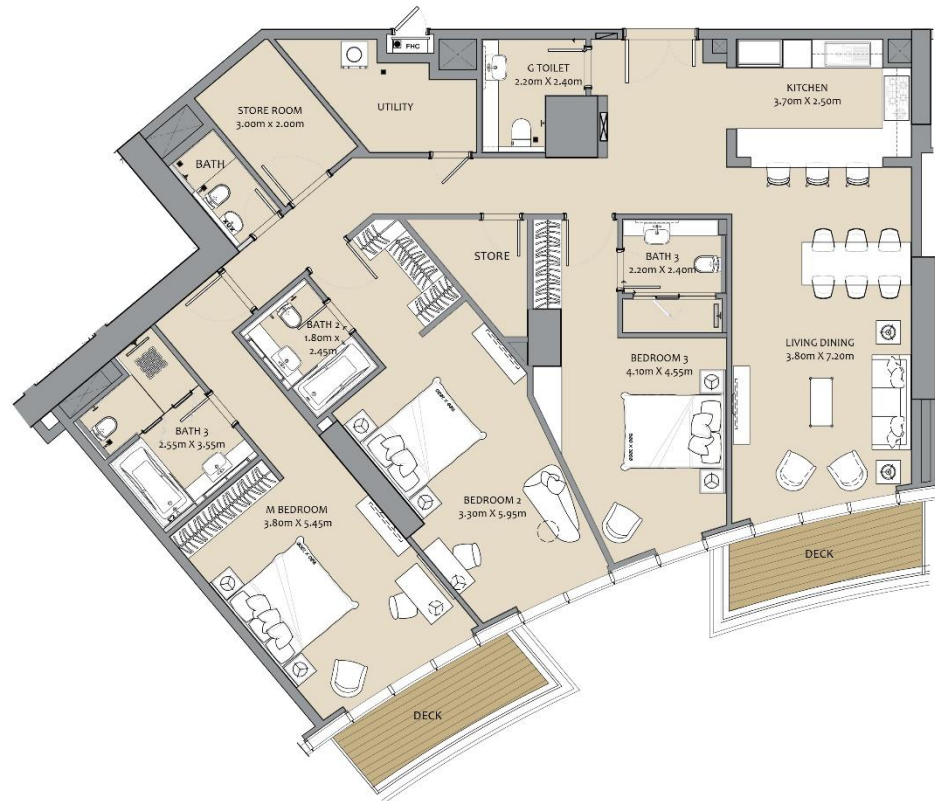
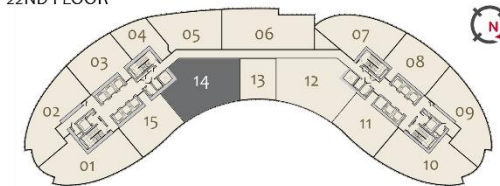
Drawings are provided by our consultants. All dimensions, features and amenities are approximate at time of printing. Actual area may vary from stated area. Drawings not to scale E&OE. The developer reserves the right to make revisions to the floor plans and any features, materials and dimensions mentioned without further notice.



IMPERIAL AVENUE

DOWNTOWN DUBAI

22ND FLOOR



APARTMENT #	APARTMENT AREA		DECK AREA		TOTAL	
2214	189.82	SQM	13.47	SQM	203.29	SQM
		2,043.00		145.00		2,188.00
		SQFT		SQFT		SQFT

THREE BEDROOM (TYPE T-3B-F)

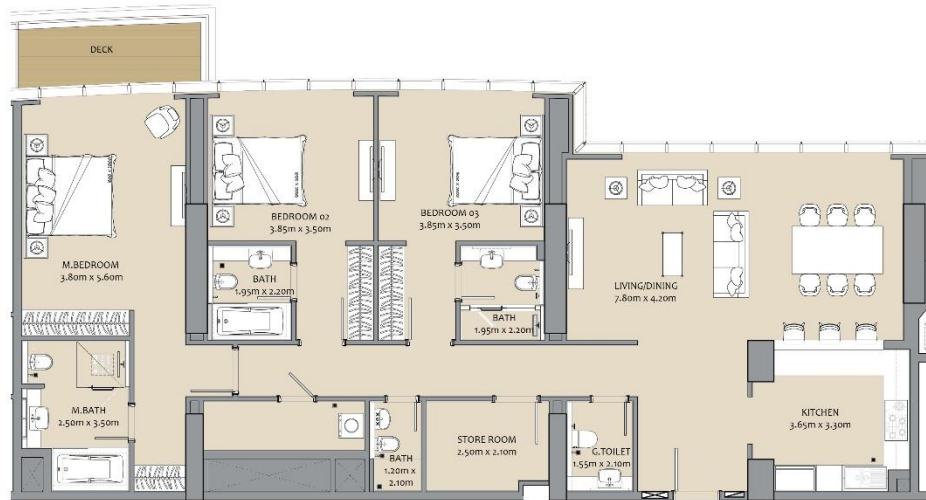
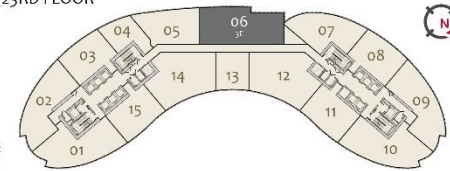
Drawings are provided by our consultants. All dimensions, features and amenities are approximate at time of printing. Actual area may vary from stated area. Drawings not to scale E&OE. The developer reserves the right to make revisions to the floor plans and any features, materials and dimensions mentioned without further notice.



IMPERIAL AVENUE

DOWNTOWN DUBAI

23RD FLOOR



APARTMENT #	APARTMENT AREA		DECK AREA		TOTAL							
2306	185.26	SQM	1,994.00	SQFT	6.69	SQM	72.00	SQFT	191.95	SQM	2,066.00	SQFT

THREE BEDROOM (TYPE T-3B-E)

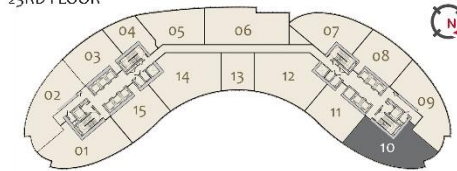
Drawings are provided by our consultants. All dimensions, features and amenities are approximate at time of printing. Actual area may vary from stated area. Drawings not to scale E&OE. The developer reserves the right to make revisions to the floor plans and any features, materials and dimensions mentioned without further notice.



IMPERIAL AVENUE

DOWNTOWN DUBAI

23RD FLOOR



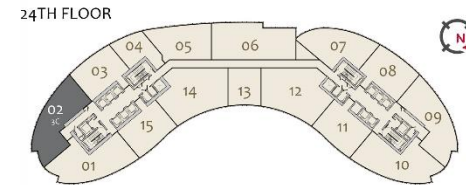
APARTMENT #	APARTMENT AREA		DECK AREA		TOTAL							
2310	176.81	SQM	1,903.00	SQFT	15.24	SQM	164.00	SQFT	192.05	SQM	2,067.00	SQFT

THREE BEDROOM (TYPE S-3B-B-1)

Drawings are provided by our consultants. All dimensions, features and amenities are approximate at time of printing. Actual area may vary from stated area. Drawings not to scale E&OE. The developer reserves the right to make revisions to the floor plans and any features, materials and dimensions mentioned without further notice.



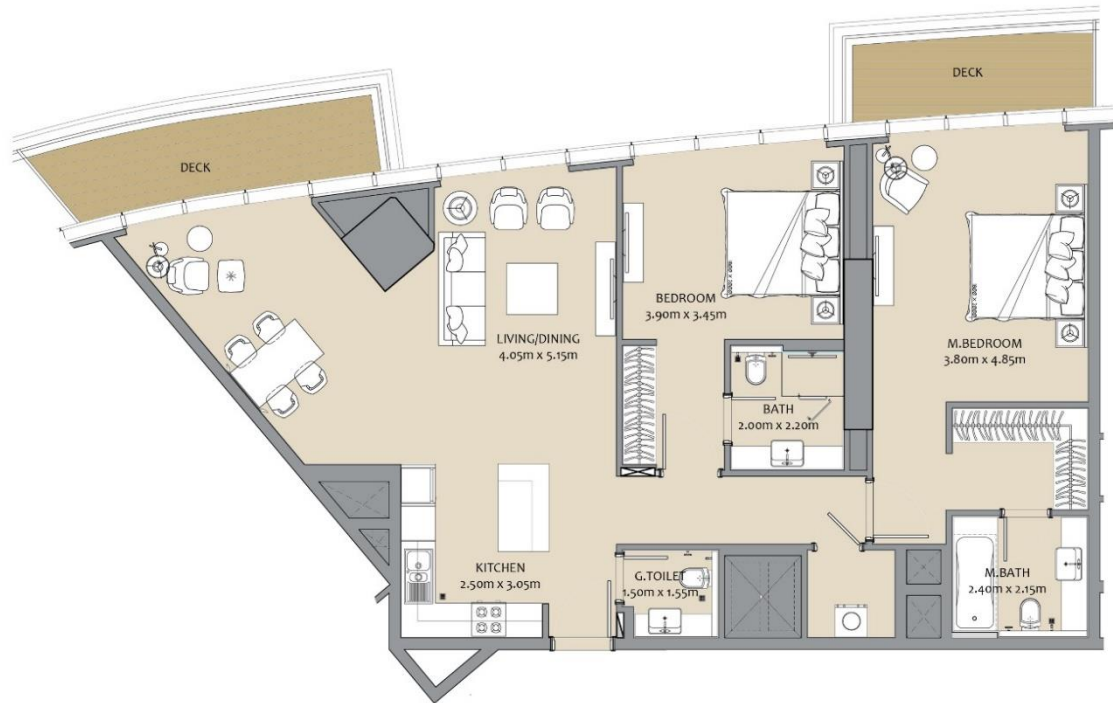

IMPERIAL AVENUE
 DOWNTOWN DUBAI



THREE BEDROOM (TYPE T-3B-C-1)

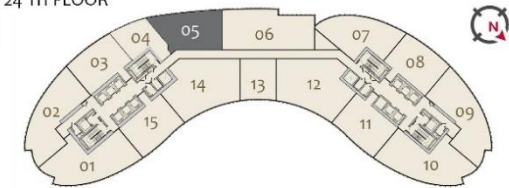
APARTMENT #	APARTMENT AREA		DECK AREA		TOTAL	
2402	163.34 SQM	1,758.00 SQFT	15.24 SQM	164.00 SQFT	178.57 SQM	1,922.00 SQFT

Drawings are provided by our consultants. All dimensions, features and amenities are approximate at time of printing. Actual area may vary from stated area. Drawings not to scale E&OE. The developer reserves the right to make revisions to the floor plans and any features, materials and dimensions mentioned without further notice.




IMPERIAL AVENUE
 DOWNTOWN DUBAI

24 TH FLOOR



TWO BEDROOM (TYPE T-2B-I)

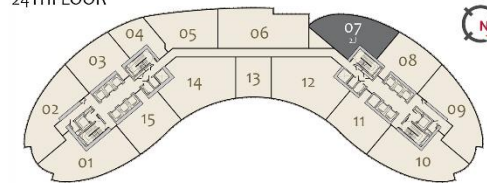
APARTMENT #	APARTMENT AREA		DECK AREA		TOTAL							
2405	124.29	SQM	1,337.74	SQFT	15.84	SQM	170.50	SQFT	140.13	SQM	1,508.00	SQFT

Drawings are provided by our consultants. All dimensions, features and amenities are approximate at time of printing. Actual area may vary from stated area. Drawings not to scale E&OE. The developer reserves the right to make revisions to the floor plans and any features, materials and dimensions mentioned without further notice.




IMPERIAL AVENUE
 DOWNTOWN DUBAI

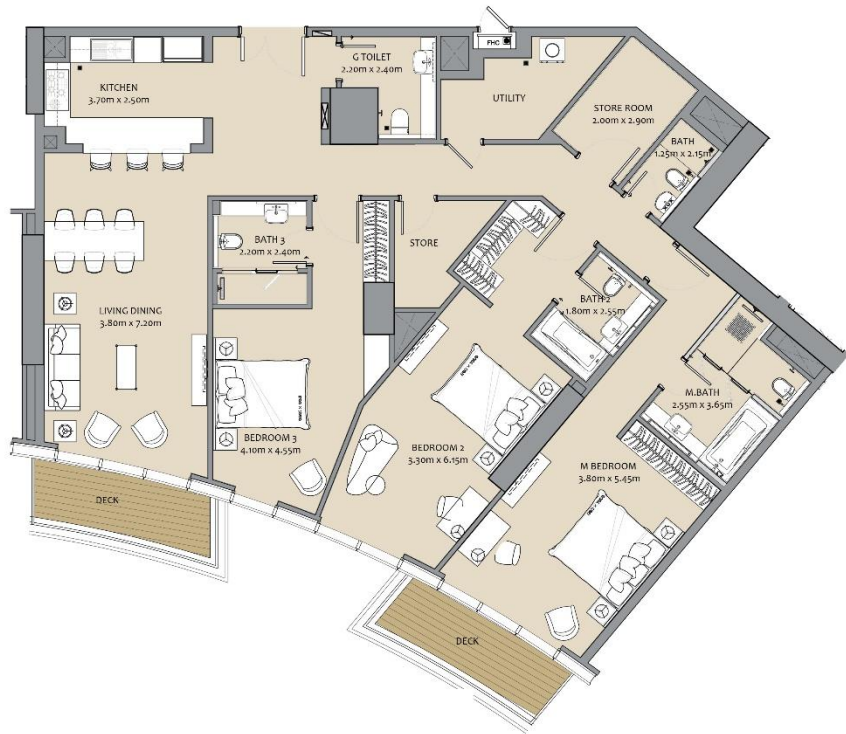
24TH FLOOR



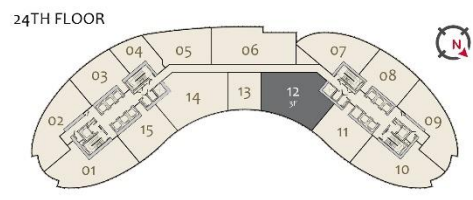
TWO BEDROOM (TYPE S-2B -J)

APARTMENT #	APARTMENT AREA		DECK AREA		TOTAL
2407	139.81 SQM	1,504.79 SQFT	21.42 SQM	230.56 SQFT	1,735.00 SQFT

Drawings are provided by our consultants. All dimensions, features and amenities are approximate at time of printing. Actual area may vary from stated area. Drawings not to scale E&OE. The developer reserves the right to make revisions to the floor plans and any features, materials and dimensions mentioned without further notice.



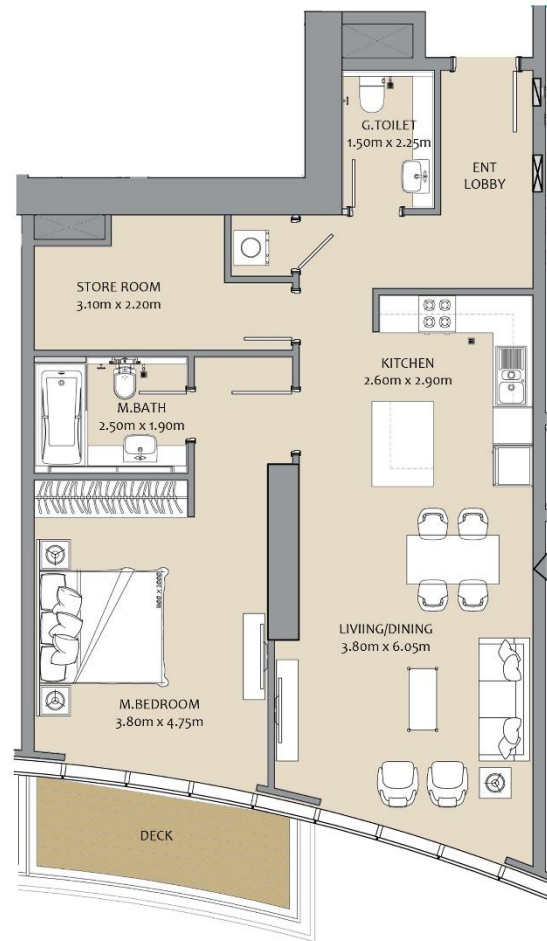

IMPERIAL AVENUE
 DOWNTOWN DUBAI



THREE BEDROOM (TYPE S-3B-F)

APARTMENT #	APARTMENT AREA		DECK AREA		TOTAL	
2412	190.10 SQM	2,046.00 SQFT	13.47 SQM	145.00 SQFT	203.57 SQM	2,191.00 SQFT

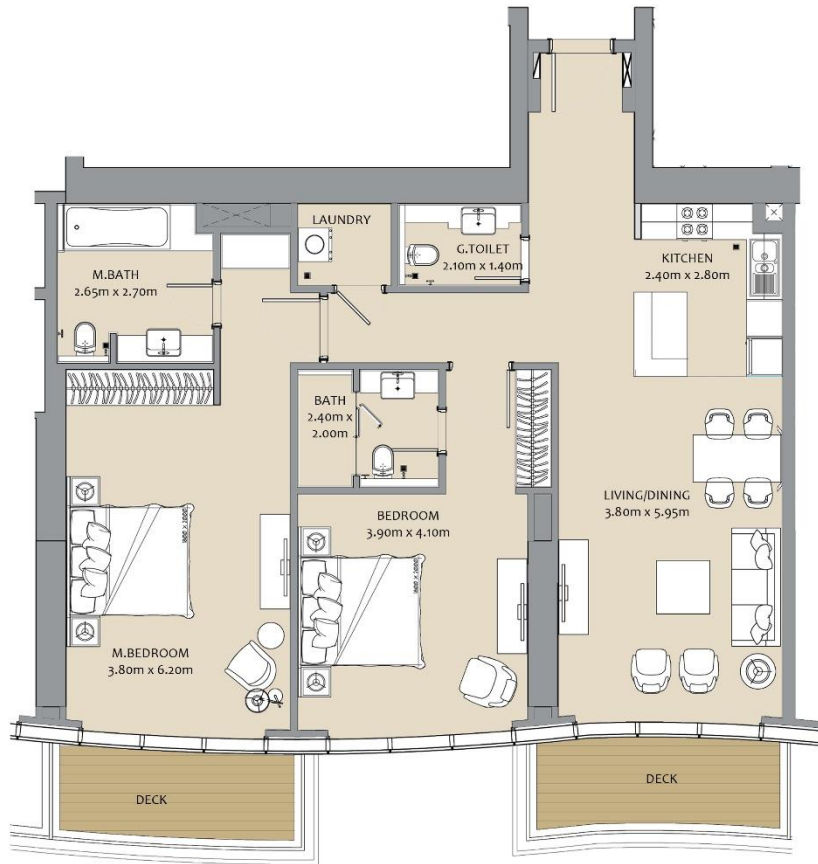
Drawings are provided by our consultants. All dimensions, features and amenities are approximate at time of printing. Actual area may vary from stated area. Drawings not to scale E&OE. The developer reserves the right to make revisions to the floor plans and any features, materials and dimensions mentioned without further notice.



APARTMENT #	APARTMENT AREA		DECK AREA		TOTAL							
2505	90.68	SQM	976.00	SQFT	7.25	SQM	78.00	SQFT	97.93	SQM	1,054.00	SQFT

ONE BEDROOM (TYPE T-1B-N)

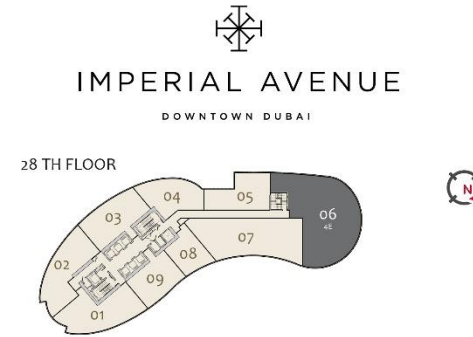
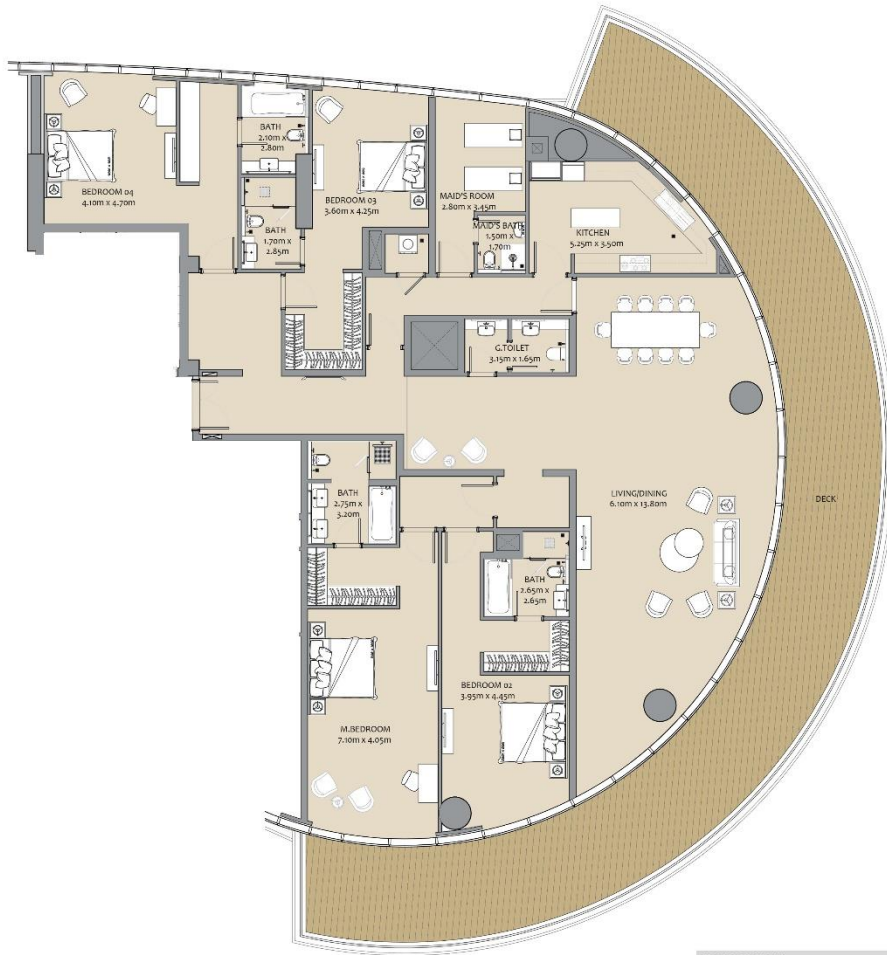
Drawings are provided by our consultants. All dimensions, features and amenities are approximate at time of printing. Actual area may vary from stated area. Drawings not to scale E&OE. The developer reserves the right to make revisions to the floor plans and any features, materials and dimensions mentioned without further notice.



TWO BEDROOM (TYPE T-2B-H-1)

APARTMENT #	APARTMENT AREA		DECK AREA		TOTAL							
2606	121.06	SQM	1,303.00	SQFT	14.68	SQM	158.00	SQFT	135.74	SQM	1,461.00	SQFT

Drawings are provided by our consultants. All dimensions, features and amenities are approximate at time of printing. Actual area may vary from stated area. Drawings not to scale E&OE. The developer reserves the right to make revisions to the floor plans and any features, materials and dimensions mentioned without further notice.



FOUR BEDROOM (TYPE T-4B-E)

APARTMENT #	APARTMENT AREA		DECK AREA		TOTAL	
2806	354.36 SQM	3,814.00 SQFT	124.13 SQM	1,336.00 SQFT	478.49 SQM	5,150.00 SQFT

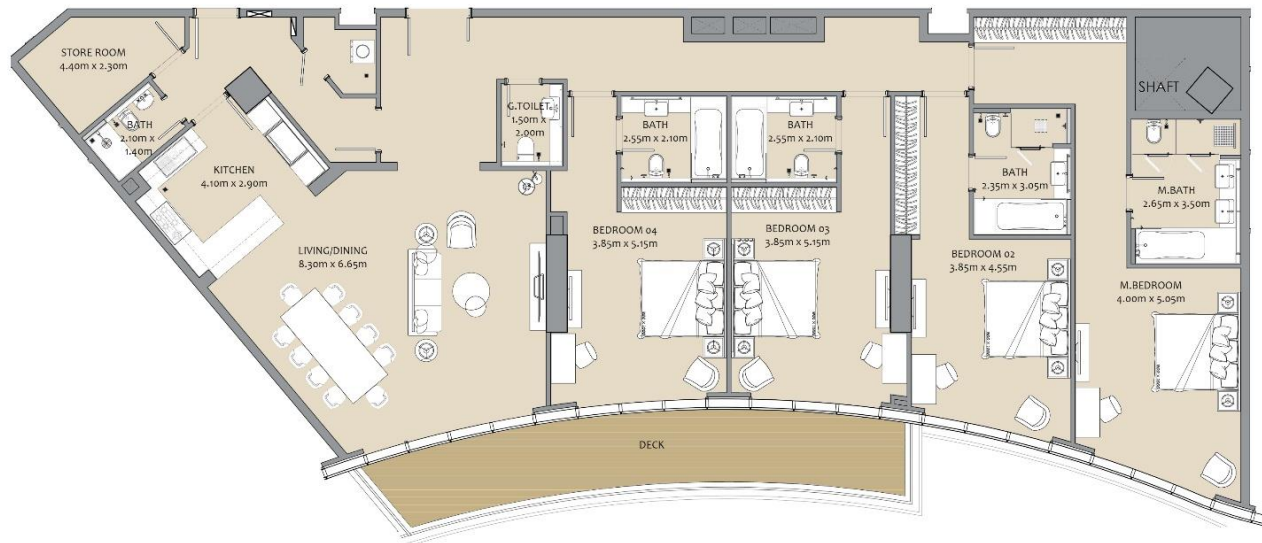
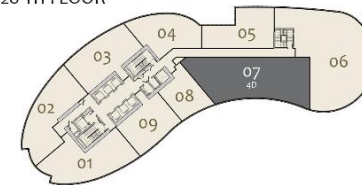
Drawings are provided by our consultants. All dimensions, features and amenities are approximate at time of printing. Actual area may vary from stated area. Drawings not to scale E&OE. The developer reserves the right to make revisions to the floor plans and any features, materials and dimensions mentioned without further notice.



IMPERIAL AVENUE

DOWNTOWN DUBAI

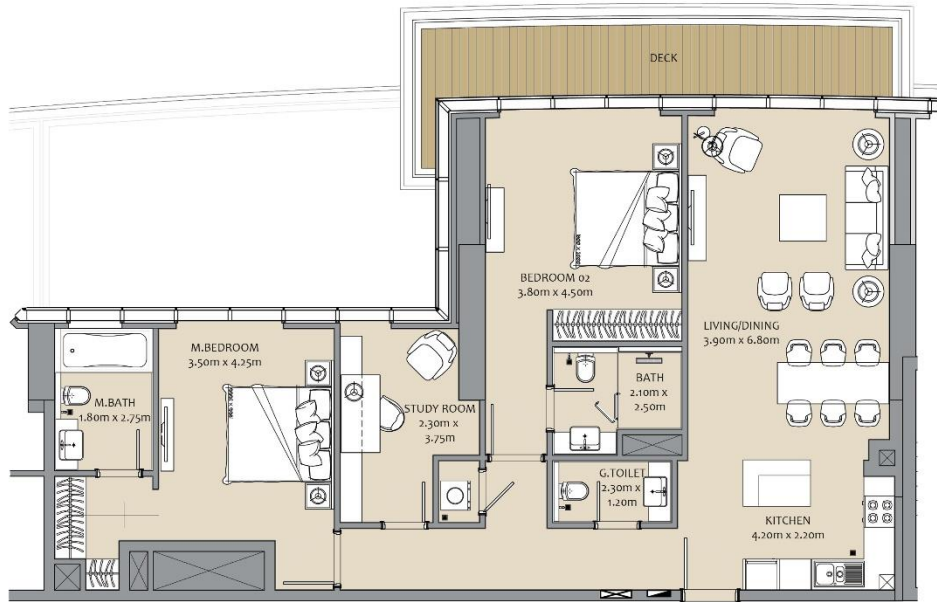
28 TH FLOOR



APARTMENT #	APARTMENT AREA		DECK AREA		TOTAL	
2807	259.96 SQM	2,798.00 SQFT	24.90 SQM	268.00 SQFT	284.86 SQM	3,066.00 SQFT

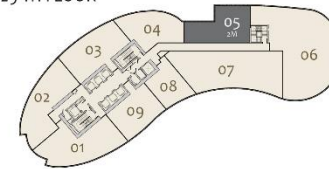
Drawings are provided by our consultants. All dimensions, features and amenities are approximate at time of printing. Actual area may vary from stated area. Drawings not to scale E&OE. The developer reserves the right to make revisions to the floor plans and any features, materials and dimensions mentioned without further notice.

FOUR BEDROOM (TYPE T-4B-D)




IMPERIAL AVENUE
 DOWNTOWN DUBAI

29 TH FLOOR



TWO BEDROOM (TYPE T-2B-M)

APARTMENT #	APARTMENT AREA		DECK AREA		TOTAL	
2905	123.94 SQM	1,334.00 SQFT	14.96 SQM	161.00 SQFT	138.90 SQM	1,495.00 SQFT

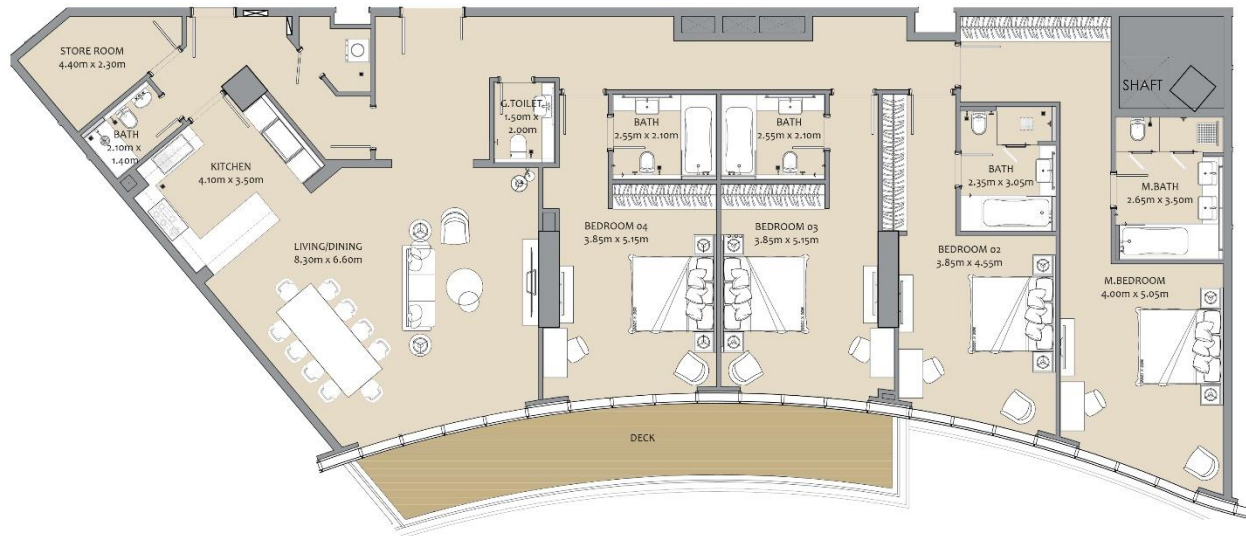
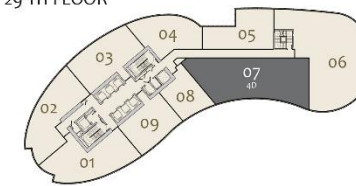
Drawings are provided by our consultants. All dimensions, features and amenities are approximate at time of printing. Actual area may vary from stated area. Drawings not to scale E&OE. The developer reserves the right to make revisions to the floor plans and any features, materials and dimensions mentioned without further notice.



IMPERIAL AVENUE

DOWNTOWN DUBAI

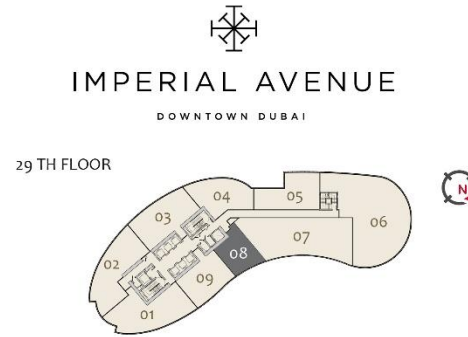
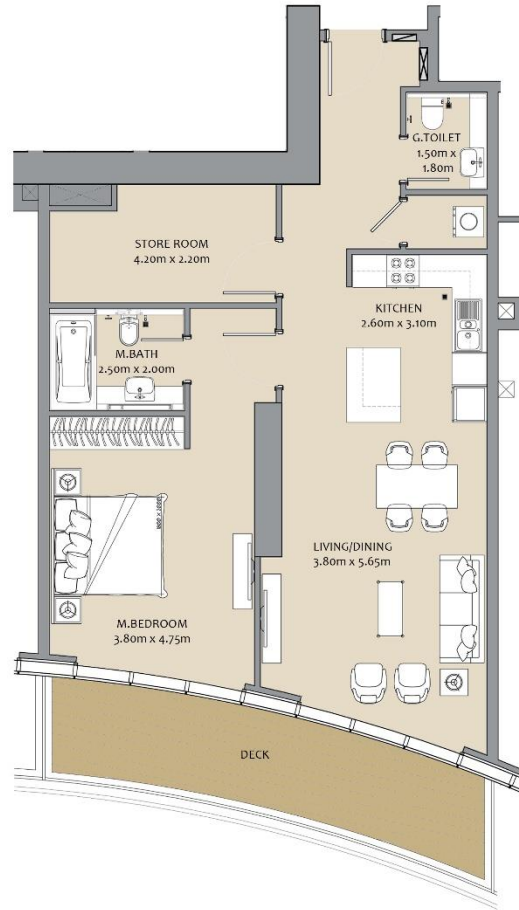
29 TH FLOOR



APARTMENT #	APARTMENT AREA	DECK AREA		TOTAL
2907	259.96 SQM 2,798.00 SQFT	24.90 SQM	268.00 SQFT	284.86 SQM 3,066.00 SQFT

Drawings are provided by our consultants. All dimensions, features and amenities are approximate at time of printing. Actual area may vary from stated area. Drawings not to scale E&OE. The developer reserves the right to make revisions to the floor plans and any features, materials and dimensions mentioned without further notice.

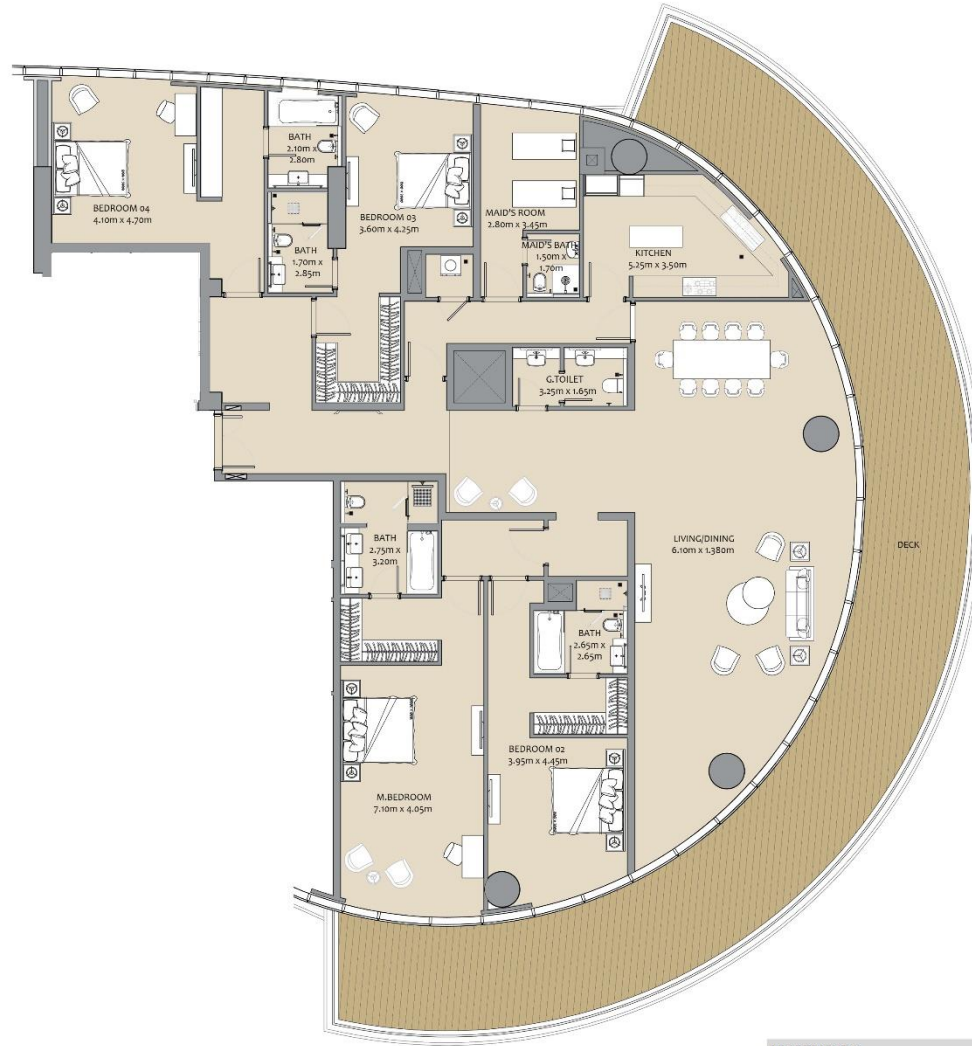
FOUR BEDROOM (TYPE T-4B-D)



ONE BEDROOM (TYPE T-1B-N-1)

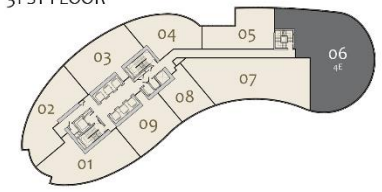
APARTMENT #	APARTMENT AREA		DECK AREA		TOTAL
2908	90.59 SQM	975.00 SQFT	16.54 SQM	178.00 SQFT	107.13 SQM 1,153.00 SQFT

Drawings are provided by our consultants. All dimensions, features and amenities are approximate at time of printing. Actual area may vary from stated area. Drawings not to scale E&OE. The developer reserves the right to make revisions to the floor plans and any features, materials and dimensions mentioned without further notice.




IMPERIAL AVENUE
 DOWNTOWN DUBAI

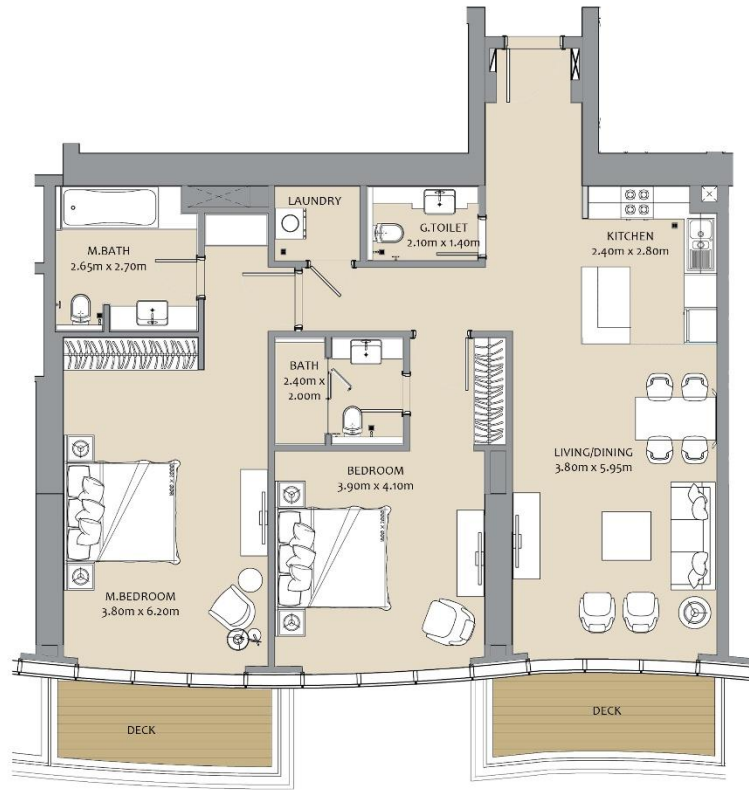
31 ST FLOOR



APARTMENT #	APARTMENT AREA		DECK AREA		TOTAL	
3106	354.36	SQM	3,814.00	SQFT	124.13	SQM
					1,336.00	SQFT
					478.49	SQM
					5,150.00	SQFT

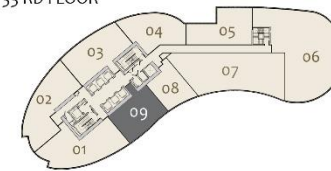
Drawings are provided by our consultants. All dimensions, features and amenities are approximate at time of printing. Actual area may vary from stated area. Drawings not to scale E&OE. The developer reserves the right to make revisions to the floor plans and any features, materials and dimensions mentioned without further notice.

FOUR BEDROOM (TYPE T-4B-E)




IMPERIAL AVENUE
 DOWNTOWN DUBAI

33 RD FLOOR



TWO BEDROOM (TYPE T-2B-H-1)

APARTMENT #	APARTMENT AREA		DECK AREA		TOTAL	
3309	121.06 SQM	1,303.00 SQFT	16.72 SQM	180.00 SQFT	137.79 SQM	1,483.00 SQFT

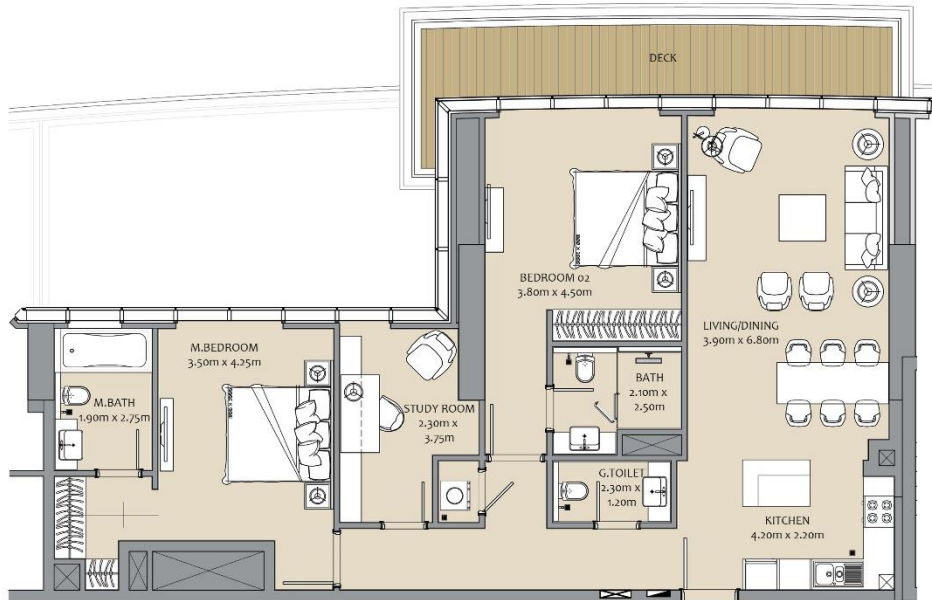
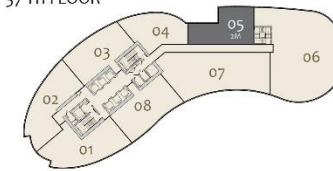
Drawings are provided by our consultants. All dimensions, features and amenities are approximate at time of printing. Actual area may vary from stated area. Drawings not to scale E&OE. The developer reserves the right to make revisions to the floor plans and any features, materials and dimensions mentioned without further notice.



IMPERIAL AVENUE

DOWNTOWN DUBAI

37 TH FLOOR



TWO BEDROOM (TYPE T-2B-M)

APARTMENT #	APARTMENT AREA		DECK AREA		TOTAL							
3705	124.13	SQM	1,336.00	SQFT	14.96	SQM	161.00	SQFT	139.09	SQM	1,497.00	SQFT

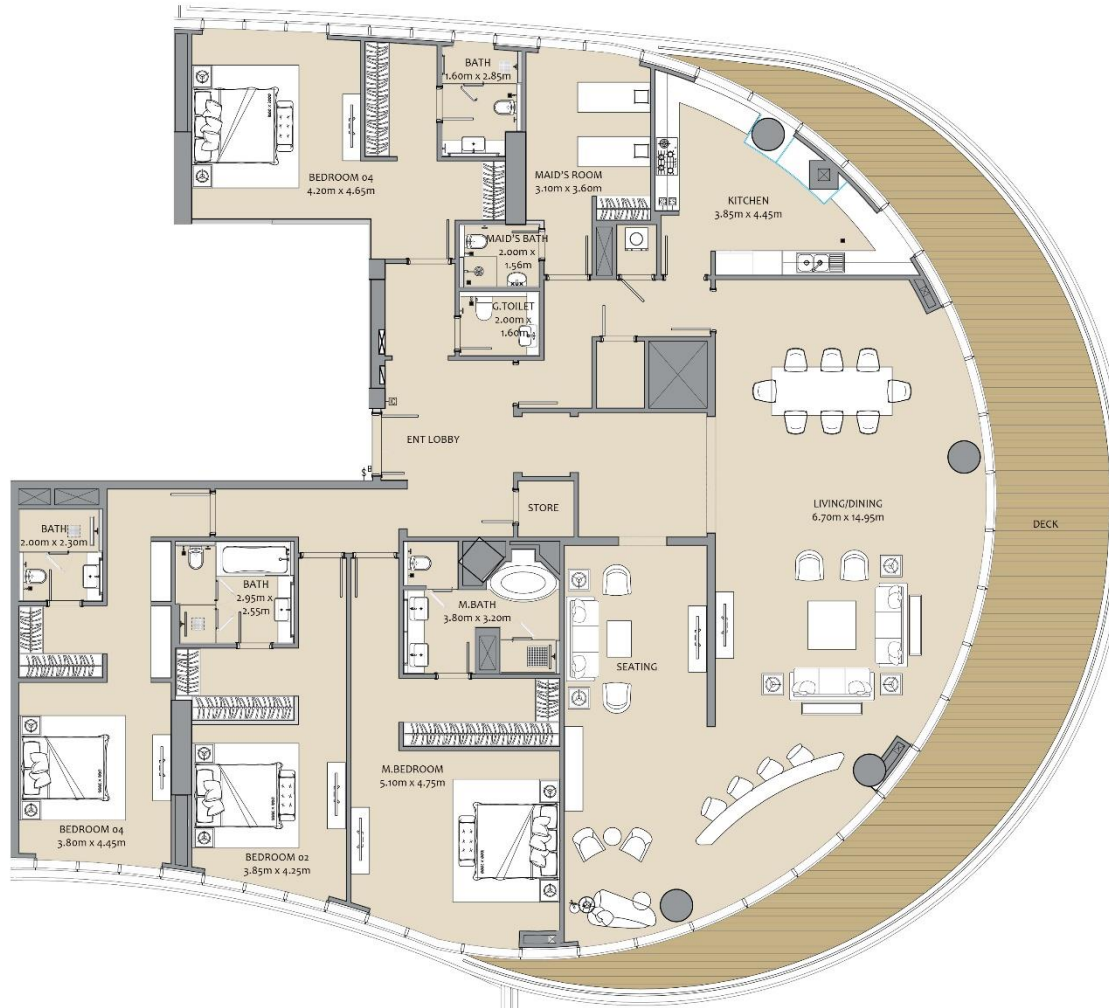
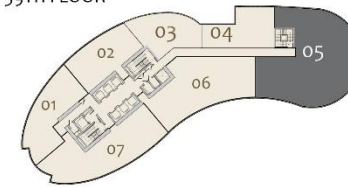
Drawings are provided by our consultants. All dimensions, features and amenities are approximate at time of printing. Actual area may vary from stated area. Drawings not to scale E&OE. The developer reserves the right to make revisions to the floor plans and any features, materials and dimensions mentioned without further notice.



IMPERIAL AVENUE

DOWNTOWN DUBAI

39TH FLOOR



FOUR BEDROOM (TYPE T-4BPH-B)

APARTMENT #	APARTMENT AREA		DECK AREA		TOTAL	
3905	403.33 SQM	4,341.00 SQFT	79.90 SQM	860.00 SQFT	483.23 SQM	5,201.00 SQFT

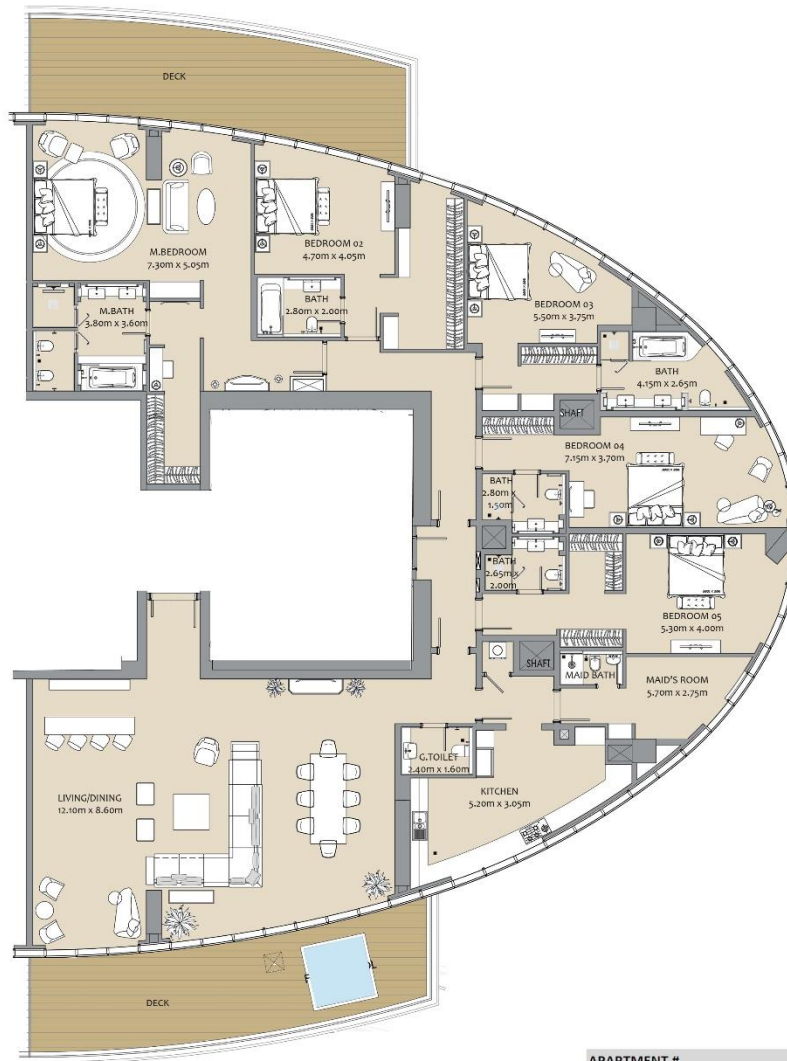
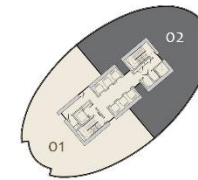
Drawings are provided by our consultants. All dimensions, features and amenities are approximate at time of printing. Actual area may vary from stated area. Drawings not to scale E&OE. The developer reserves the right to make revisions to the floor plans and any features, materials and dimensions mentioned without further notice.



IMPERIAL AVENUE

DOWNTOWN DUBAI

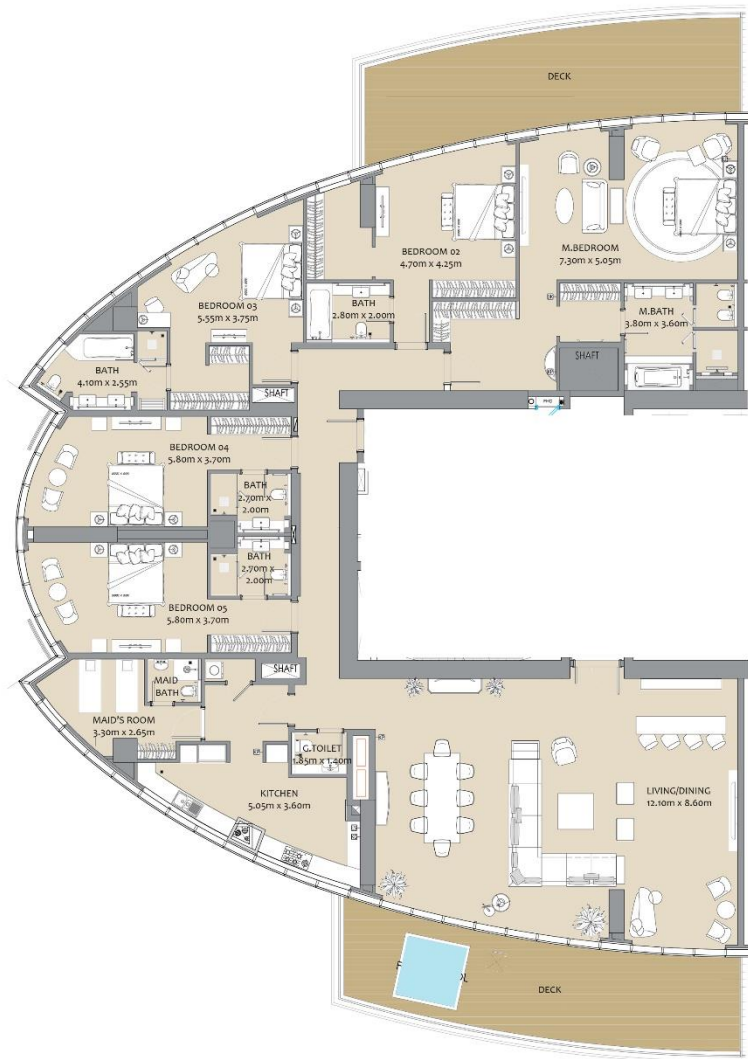
44TH FLOOR



APARTMENT #	APARTMENT AREA		DECK AREA		TOTAL							
4402	455.45	SQM	4,902.00	SQFT	87.99	SQM	947.00	SQFT	543.44	SQM	5,849.00	SQFT

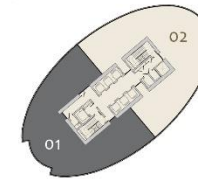
FIVE BEDROOM PENTHOUSE (TYPE T-5B PH-B)

Drawings are provided by our consultants. All dimensions, features and amenities are approximate at time of printing. Actual area may vary from stated area. Drawings not to scale E&OE. The developer reserves the right to make revisions to the floor plans and any features, materials and dimensions mentioned without further notice.




IMPERIAL AVENUE
 DOWNTOWN DUBAI

45 TH FLOOR



**FIVE BEDROOM PENTHOUSE
(TYPE T-5B PH-A)**

APARTMENT #	APARTMENT AREA		DECK AREA		TOTAL	
4501	425.53 SQM	4,580.00 SQFT	87.99 SQM	947.00 SQFT	513.52 SQM	5,527.00 SQFT

Drawings are provided by our consultants. All dimensions, features and amenities are approximate at time of printing. Actual area may vary from stated area. Drawings not to scale E&OE. The developer reserves the right to make revisions to the floor plans and any features, materials and dimensions mentioned without further notice.