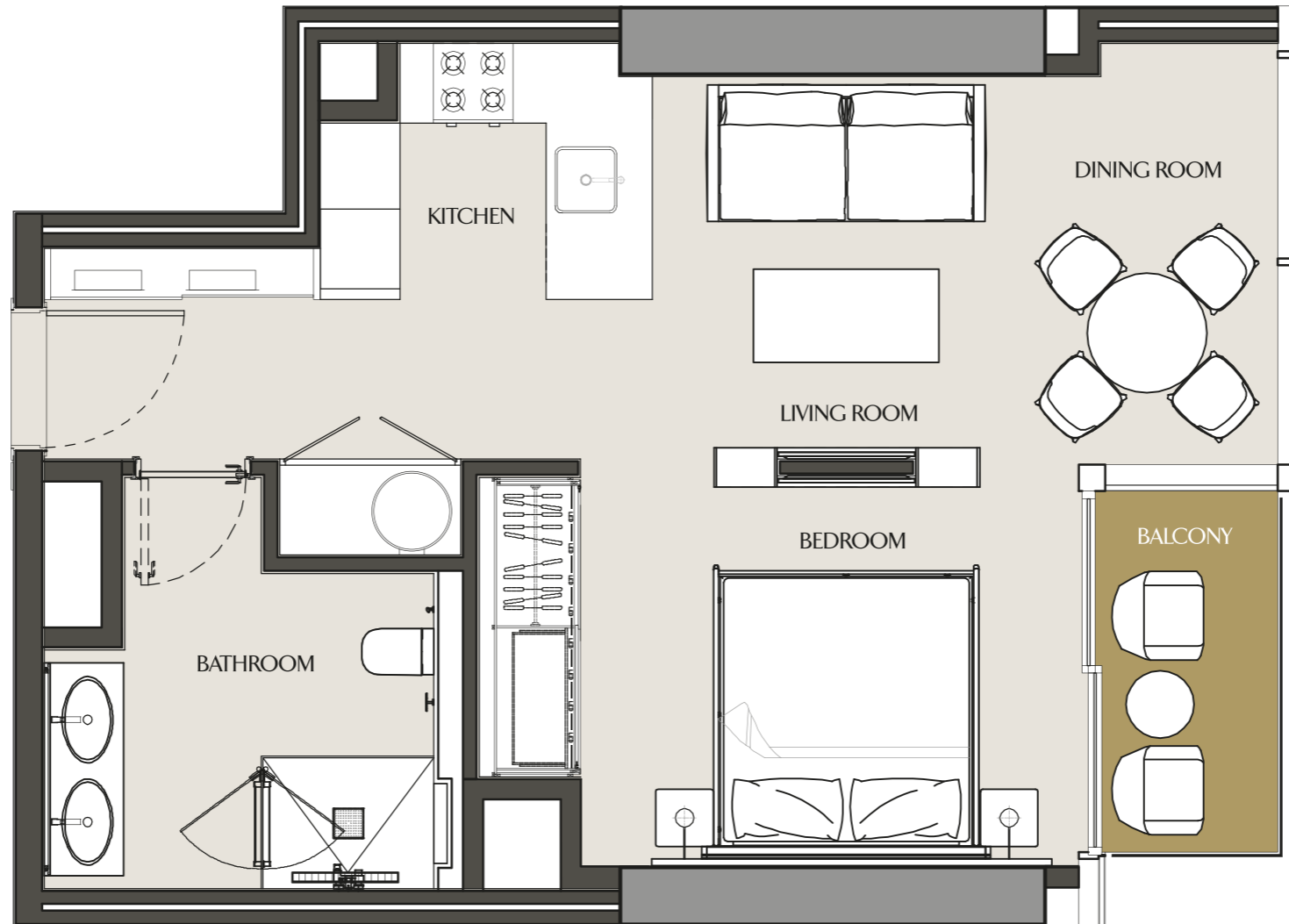


EXECUTIVE STUDIO - SA

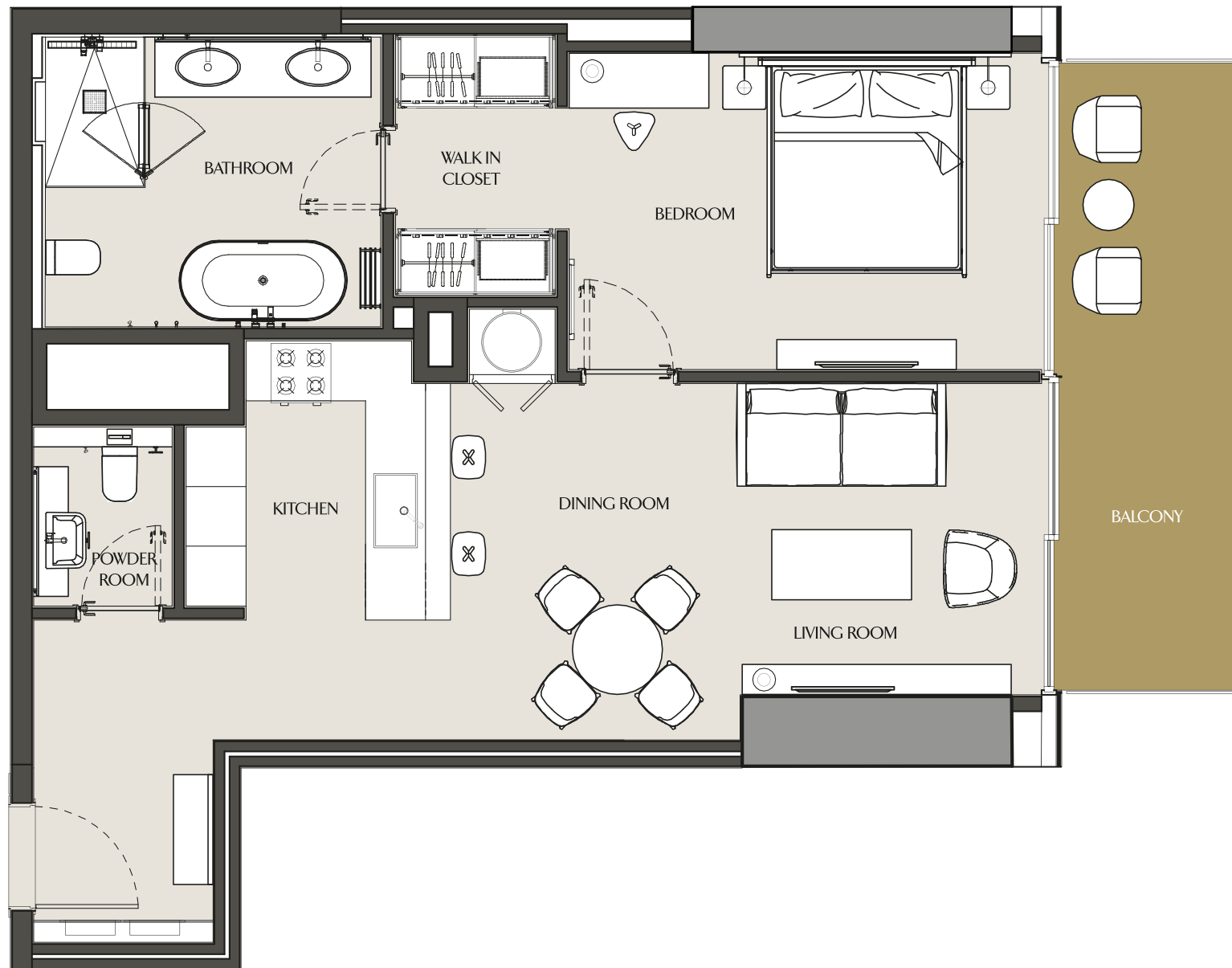
LEVELS 19-21, 30-55



Apartment Area	53.25 m ²	573.18 ft ²
Balcony Area	4.03 m ²	43.38 ft ²
Total Area	57.28 m ²	616.56 ft ²

ONE BEDROOM - 1A

LEVELS 19-55



Apartment Area	78.53 m ²	845.29 ft ²
Balcony Area	12.24 m ²	131.75 ft ²
Total Area	90.77 m²	977.04 ft²

ONE BEDROOM - 1B

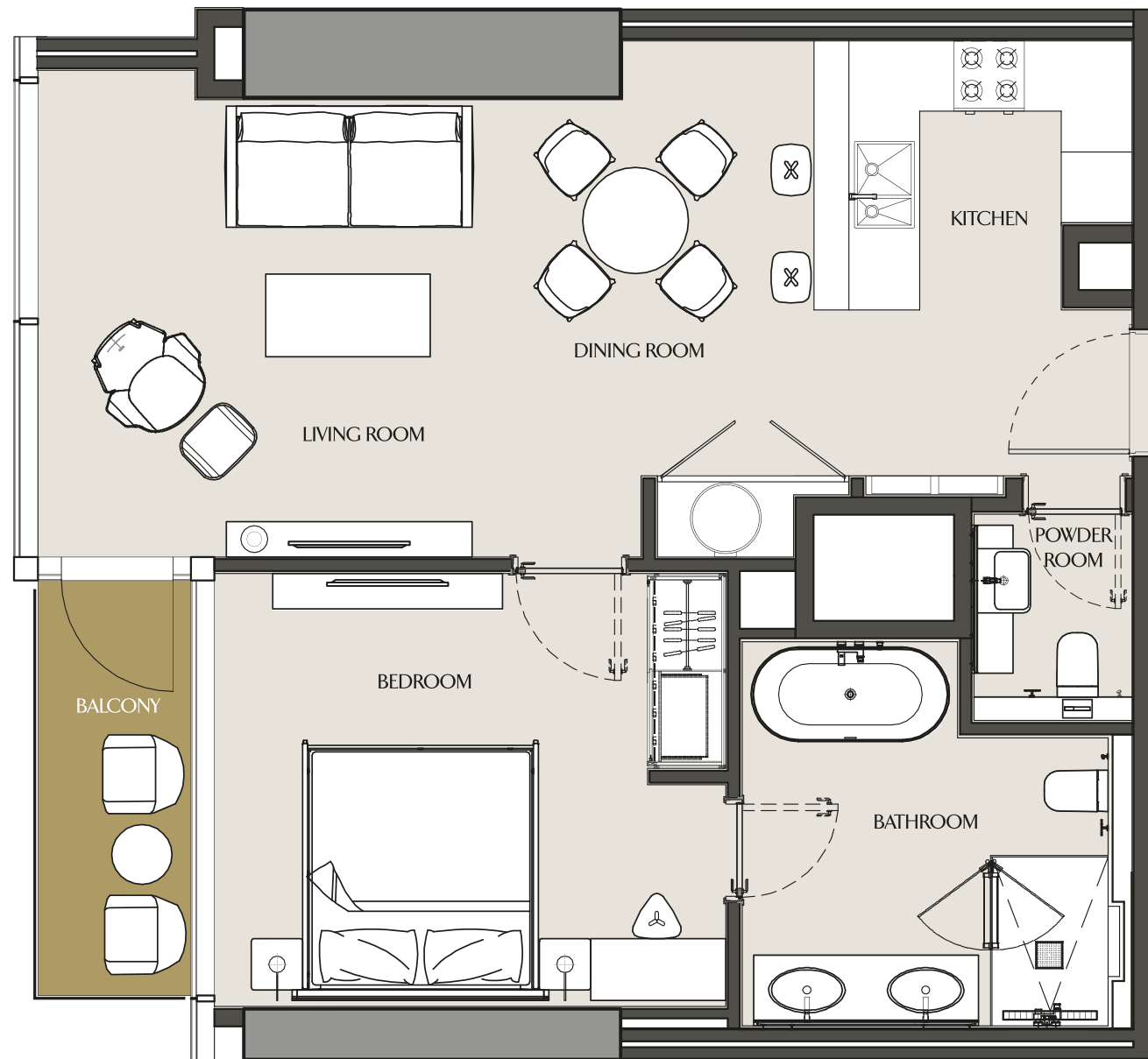
LEVELS 21-40, 43-55



Apartment Area	83.6 m ²	899.86 ft ²
Balcony Area	4.43 m ²	47.68 ft ²
Total Area	88.03 m ²	947.55 ft ²

ONE BEDROOM - 1C

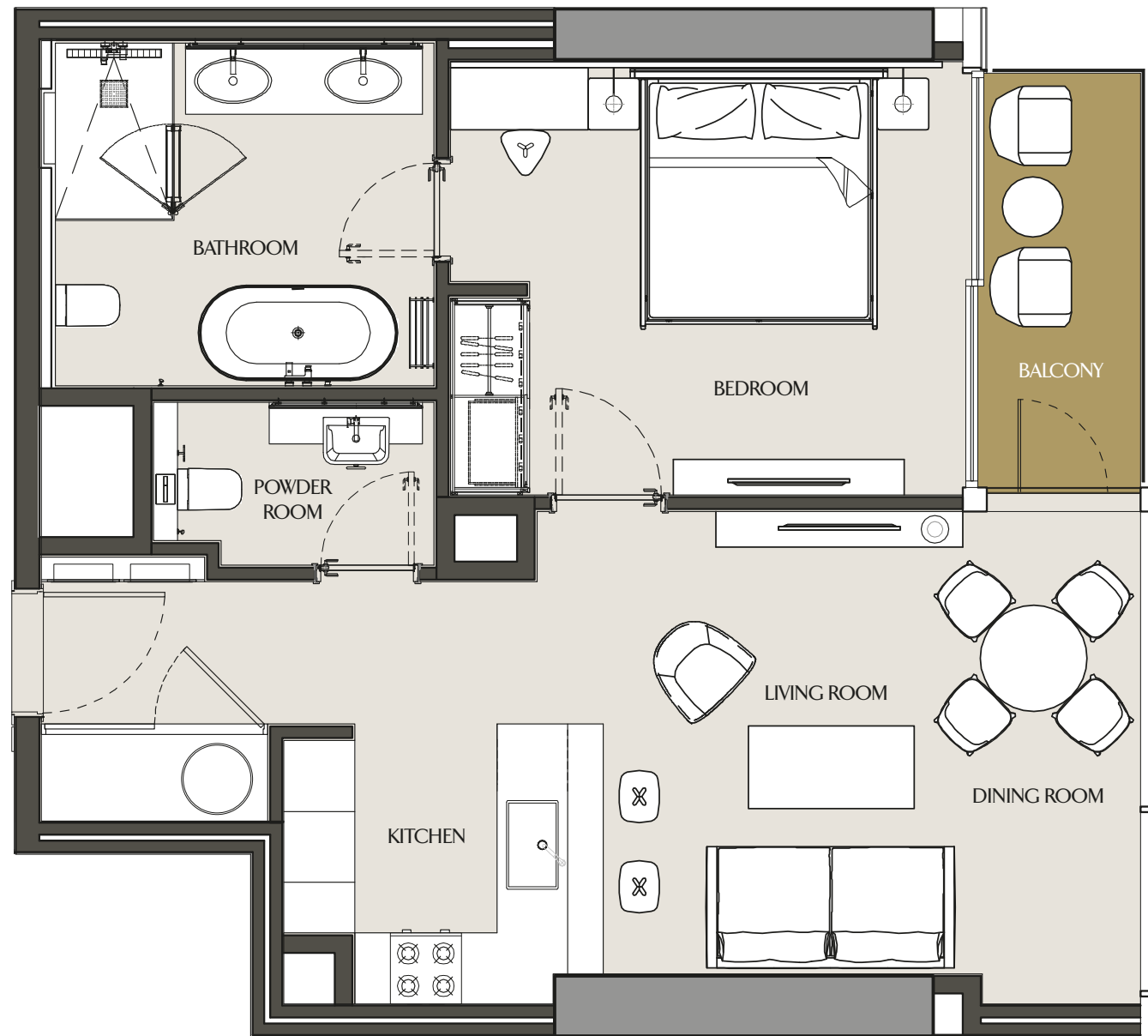
LEVELS 19,20



Apartment Area	74.36 m ²	800.40 ft ²
Balcony Area	5.17 m ²	55.65 ft ²
Total Area	79.53 m ²	856.05 ft ²

ONE BEDROOM - 1D

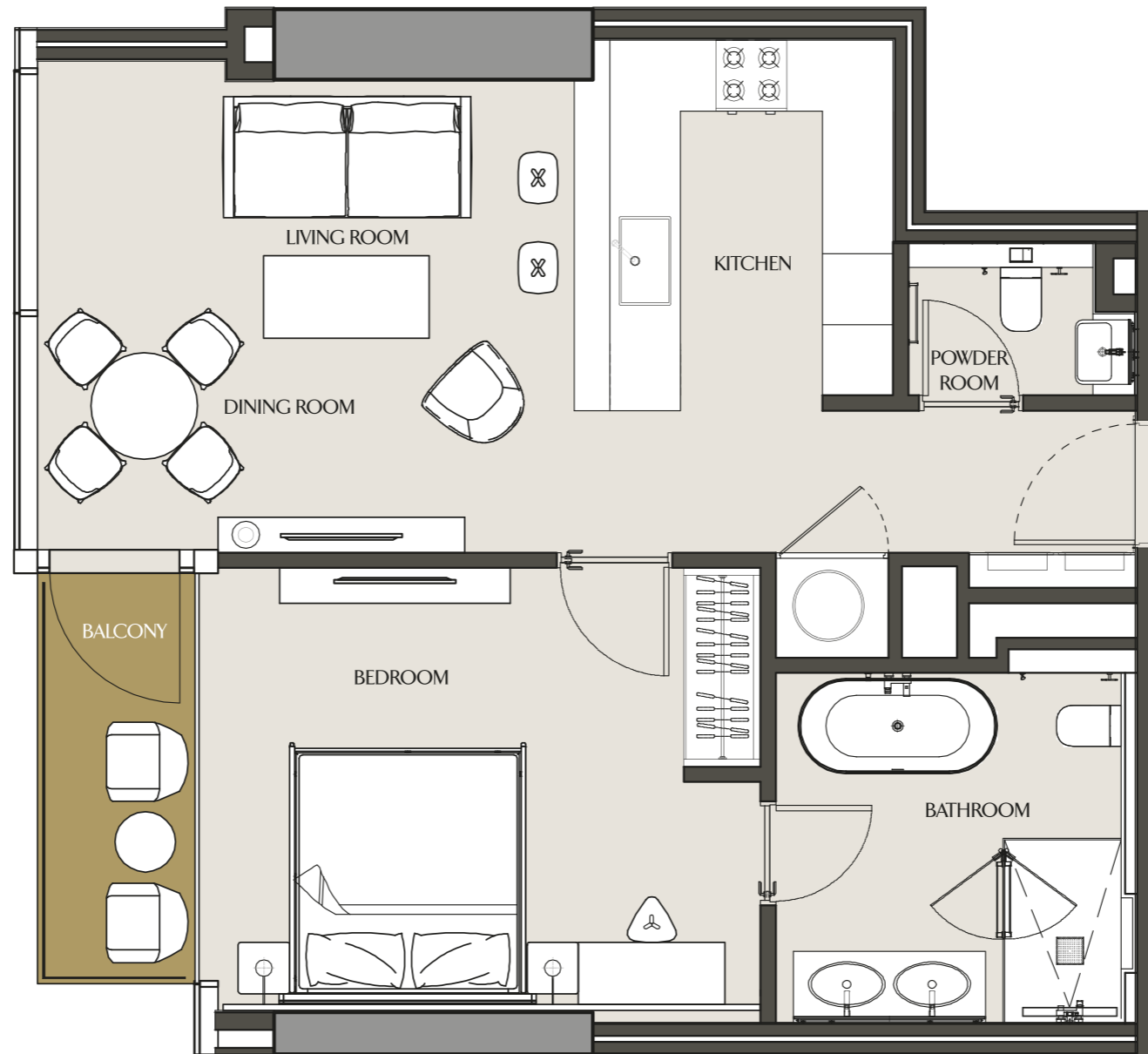
LEVELS 21-40, 43-55



Apartment Area	69.40 m ²	747.02 ft ²
Balcony Area	4.94 m ²	53.17 ft ²
Total Area	74.34 m ²	800.19 ft ²

ONE BEDROOM - 1E

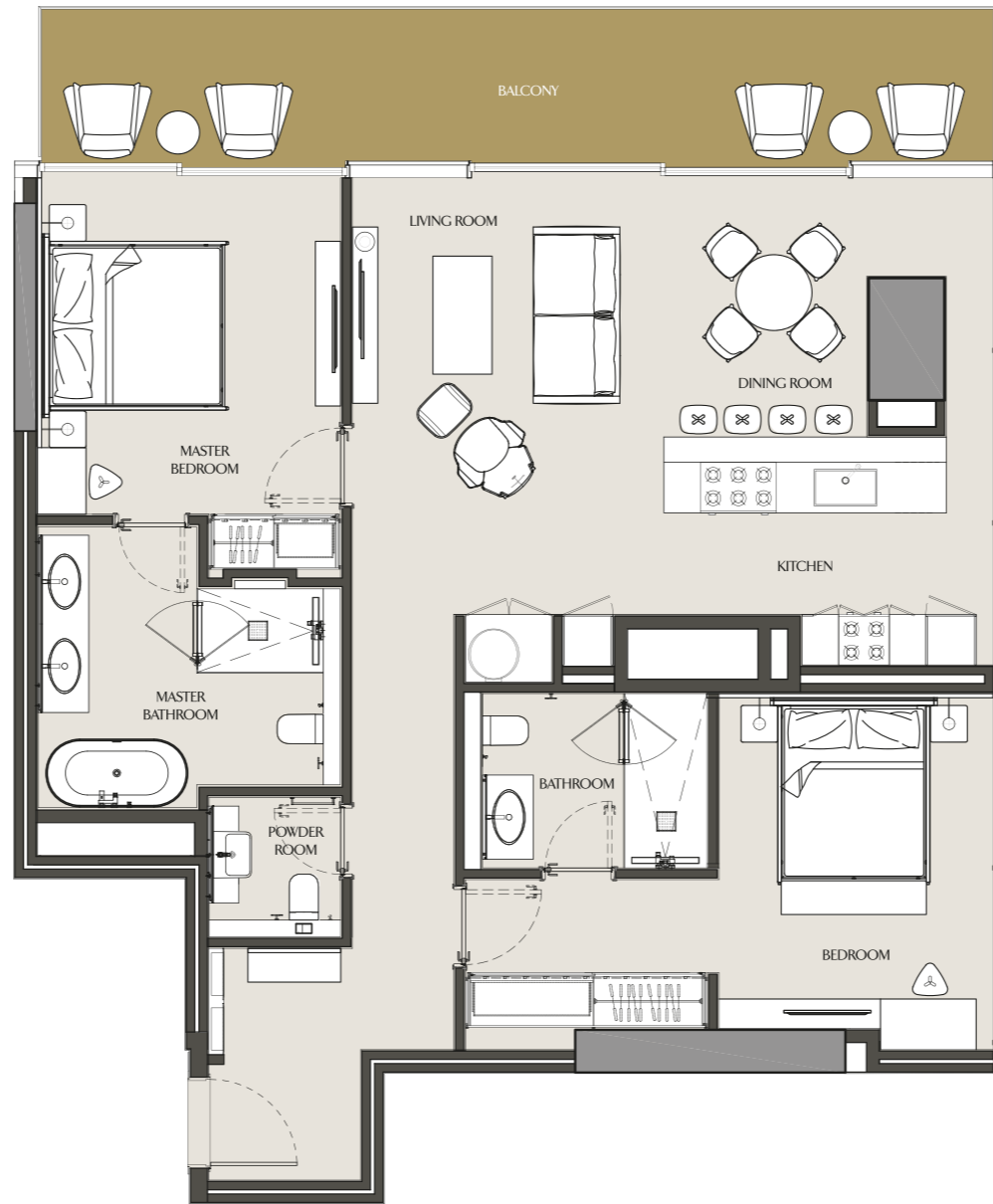
LEVELS 30-55



Apartment Area	69.66 m ²	749.81 ft ²
Balcony Area	5.16 m ²	55.54 ft ²
Total Area	74.82 m ²	805.36 ft ²

TWO BEDROOM - 2A

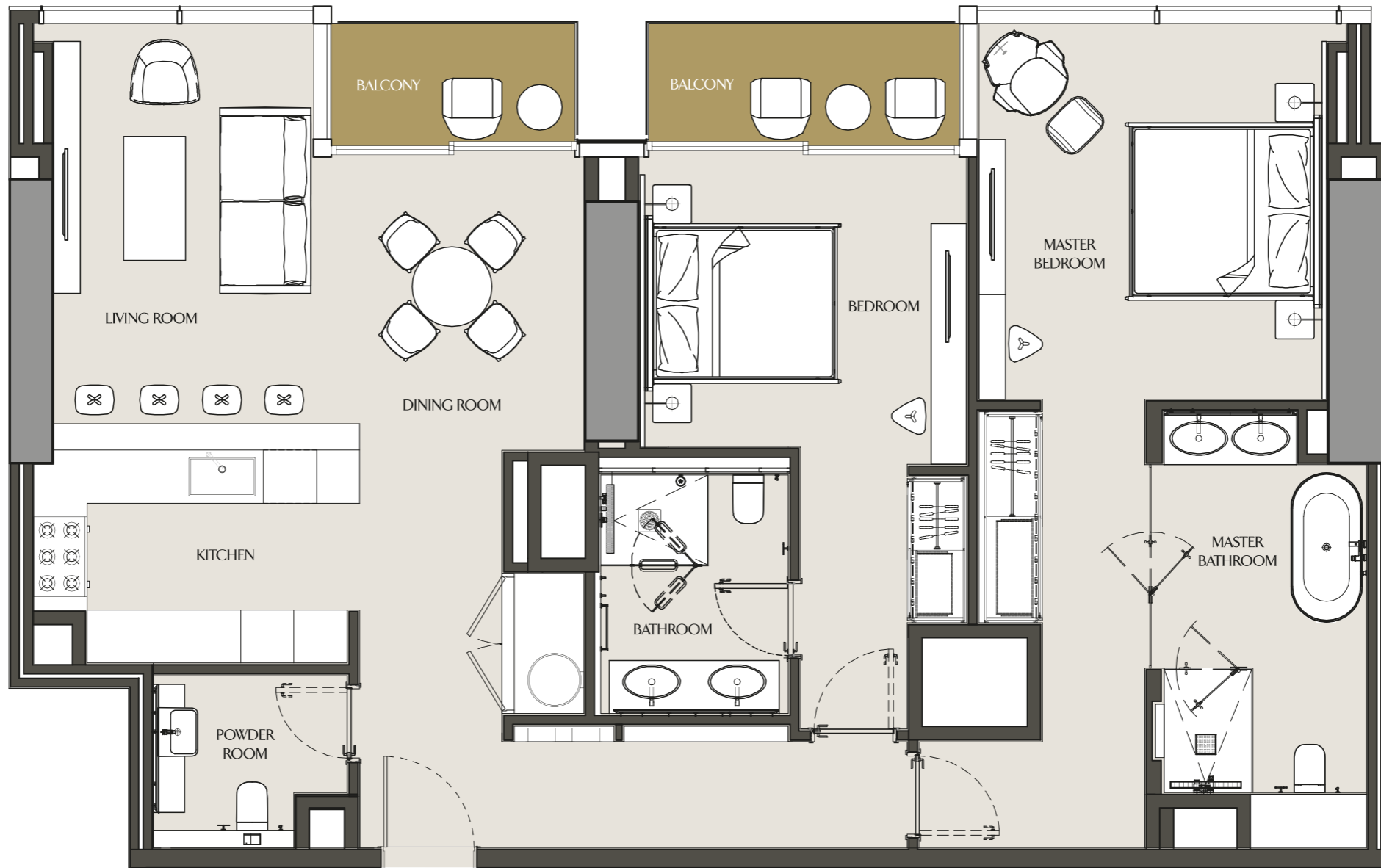
LEVELS 19-55



Apartment Area	119.53 m ²	1286.61 ft ²
Balcony Area	21.59 m ²	232.39 ft ²
Total Area	141.12 m ²	1519.00 ft ²

TWO BEDROOM - 2B

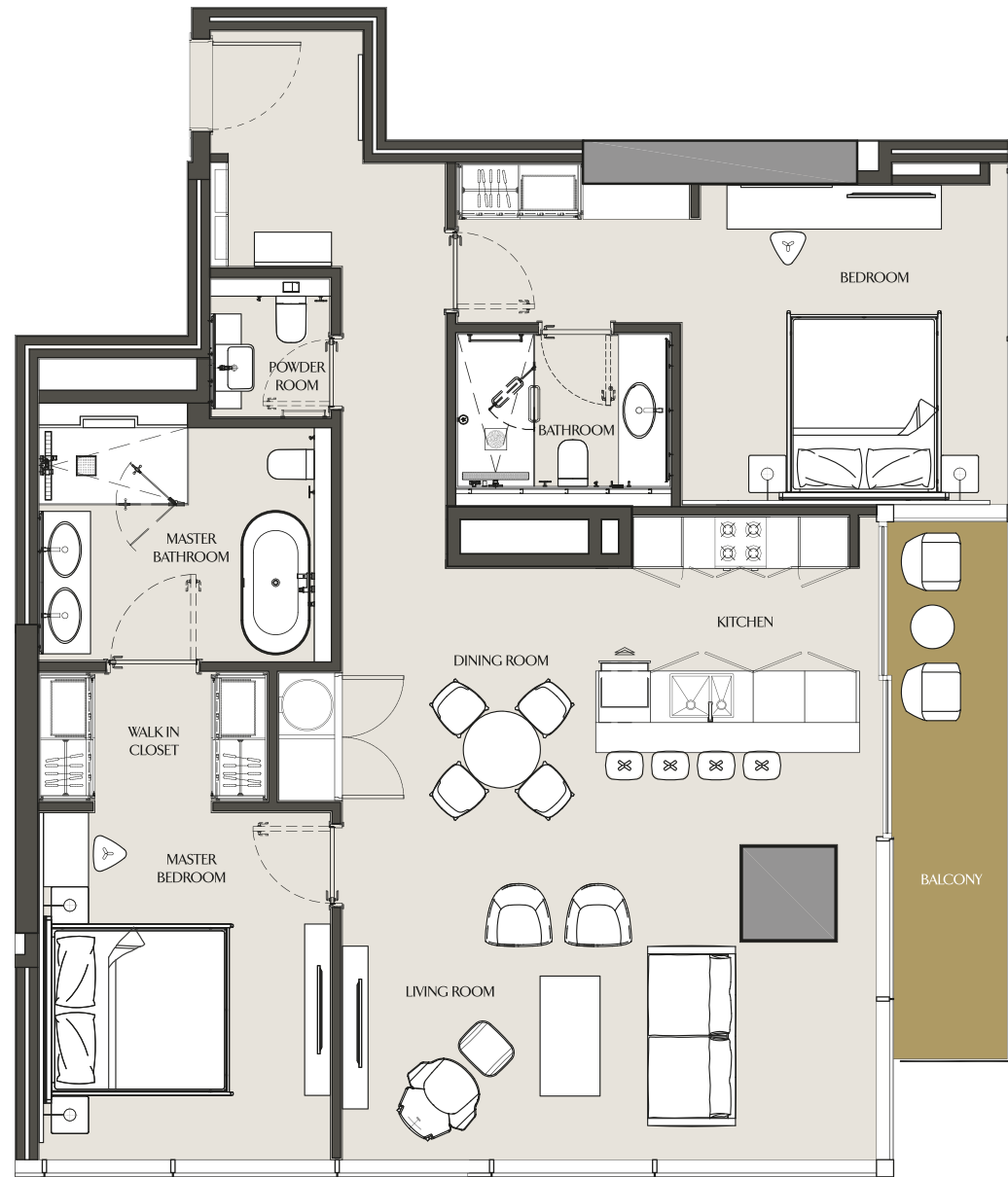
LEVEL 21



Apartment Area	128.66 m ²	1384.88 ft ²
Balcony Area	8.97 m ²	96.55 ft ²
Total Area	137.63 m ²	1481.44 ft ²

TWO BEDROOM - 2C

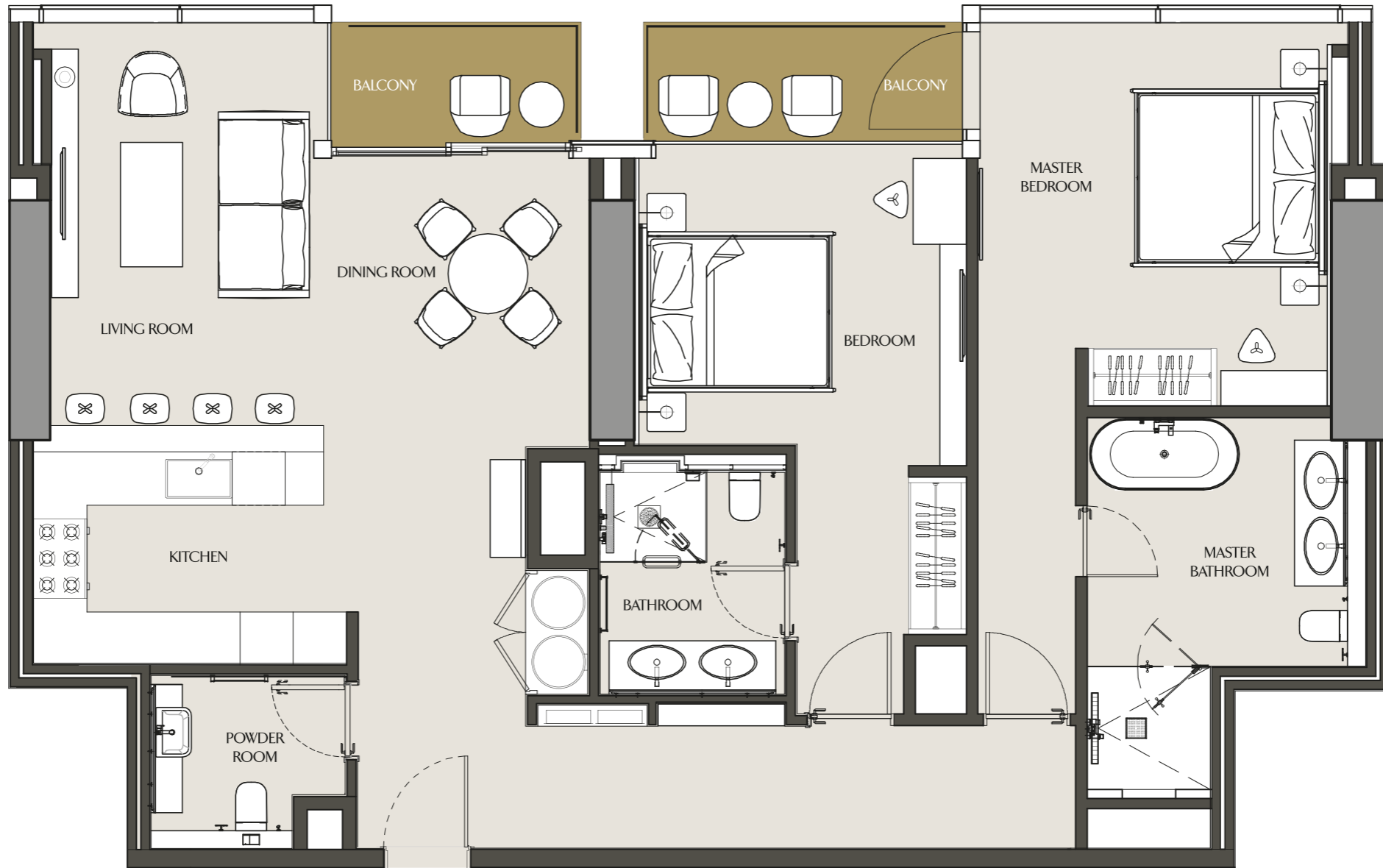
LEVELS 21-40, 43-55



Apartment Area	124.11 m ²	1335.91 ft ²
Balcony Area	9.00 m ²	96.88 ft ²
Total Area	133.11 m ²	1432.78 ft ²

TWO BEDROOM - 2D

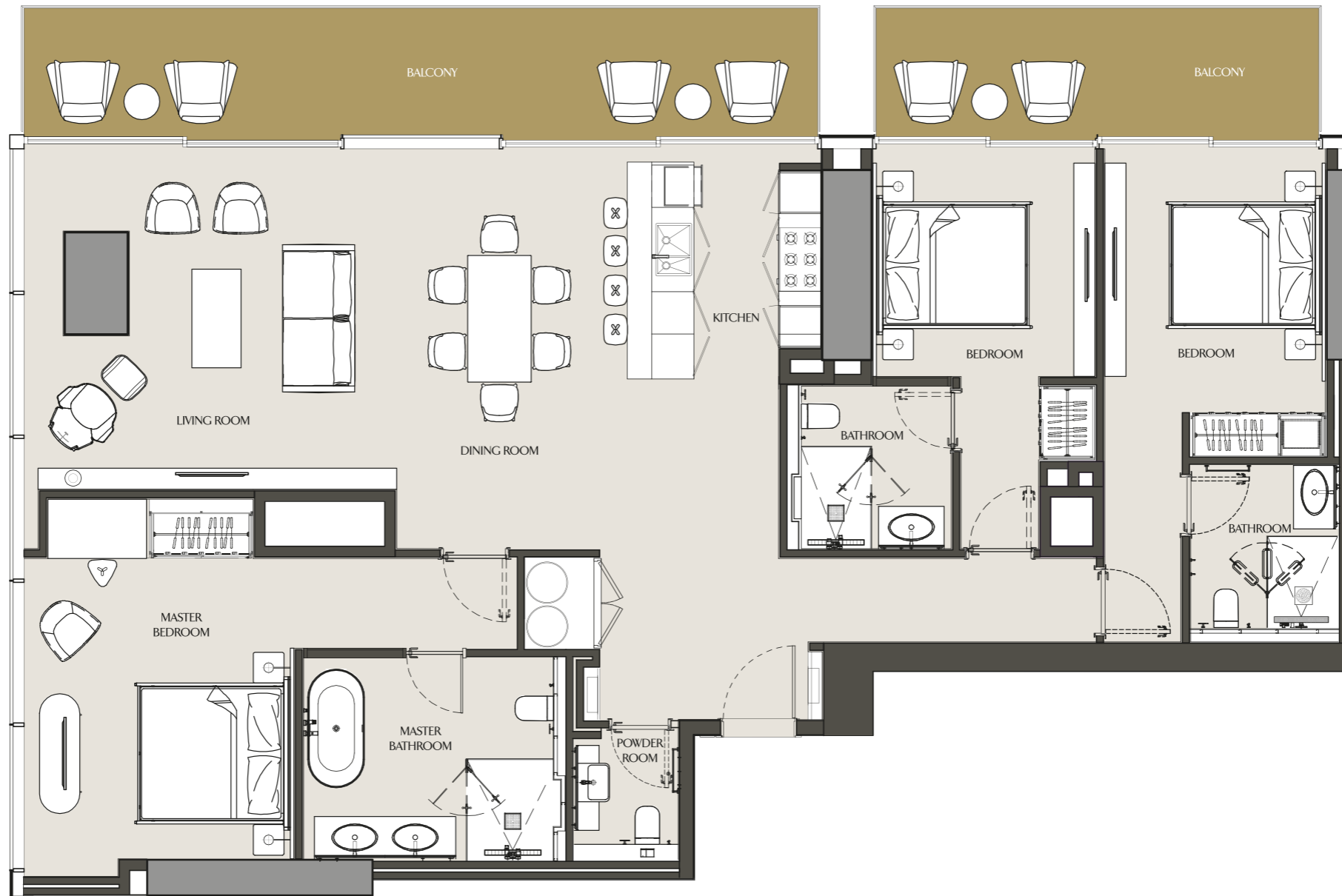
LEVELS 22-29



Apartment Area	124.64 m ²	1341.61 ft ²
Balcony Area	9.28 m ²	99.89 ft ²
Total Area	133.92 m ²	1441.50 ft ²

THREE BEDROOM - 3A

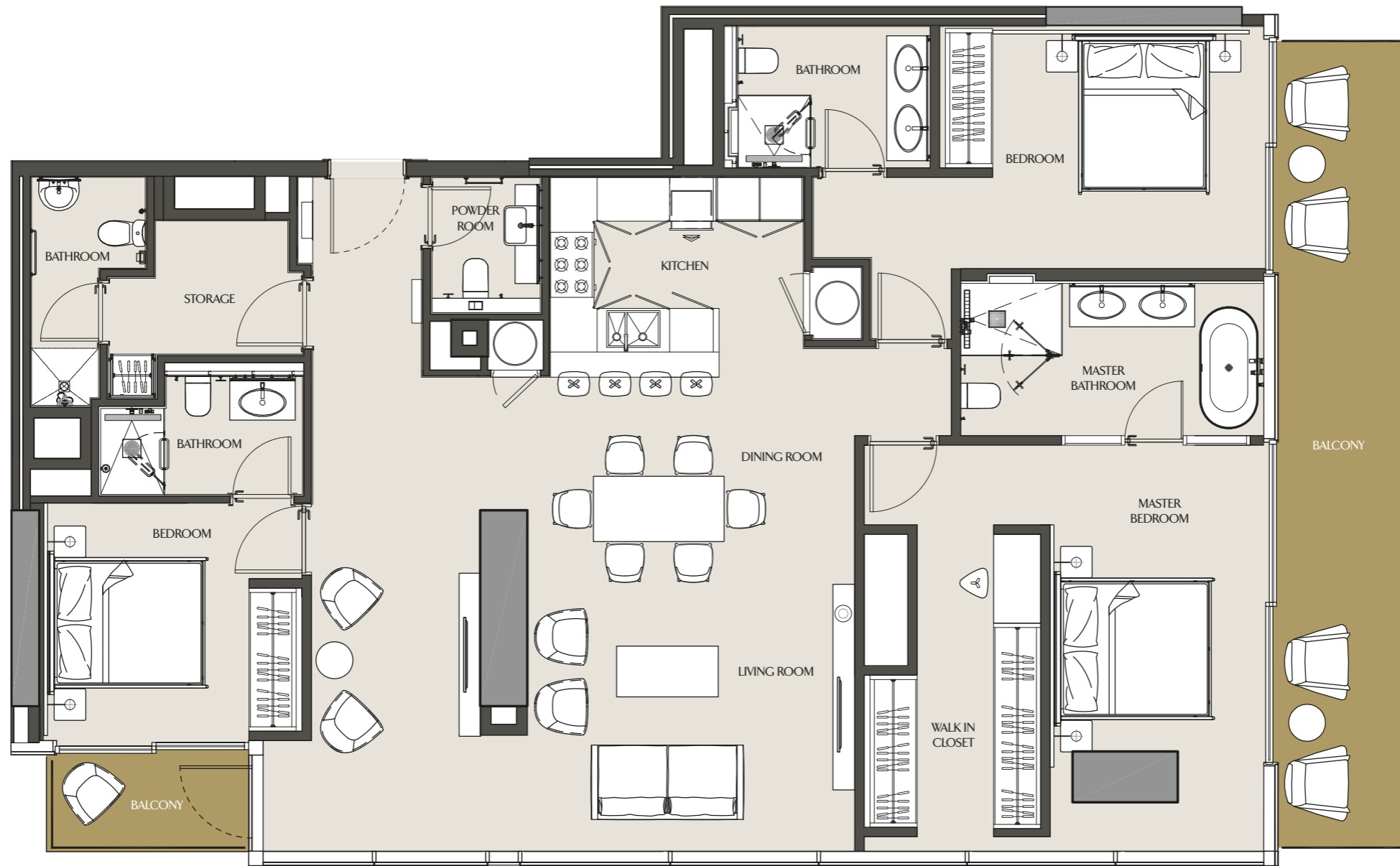
LEVELS 19-21



Apartment Area	169.01 m ²	1819.21 ft ²
Balcony Area	33.81 m ²	363.93 ft ²
Total Area	202.82 m ²	2183.14 ft ²

THREE BEDROOM - 3B

LEVELS 22-29, 43-55



Apartment Area	173.80 m ²	1870.77 ft ²
Balcony Area	25.58 m ²	275.34 ft ²
Total Area	199.38 m ²	2146.11 ft ²