

LAUNCHING

SEAGULL POINT

WATER HAS A NEW FRONT



MOHAMMED BIN RASHID
AL MAKTOUM CITY

DISTRICT ONE





We are delighted to announce the launch of an elegant new tower at District One, with exclusive amenities.

Featuring 1, 2 and 3 bedroom apartments with views of the iconic Crystal Lagoon, this tower is a vibrant addition to Dubai's most prestigious community.

Register today for special pre-launch benefits.



EXCLUSIVE AMENITIES

**FULLY
FURNISHED
APARTMENTS**





CAFÉ

Friends flock together





LIBRARY

Let your imagination soar





GYM

Believe you can fly





KIDS PLAY AREA
Fun takes flight



ICONIC LOCATION



10 MINS
BUSINESS BAY



5 MINS
THE MEYDAN HOTEL



12 MINS
DIFC



15 MINS
BURJ AL ARAB

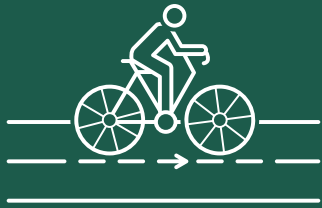


12 MINS
WORLD TRADE CENTRE



20 MINS
INTERNATIONAL AIRPORT

AMENITIES



Bicycle Track



Jogging Track



Supermarket



Pharmacy



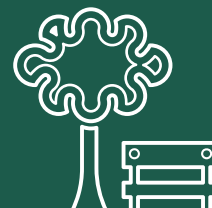
School



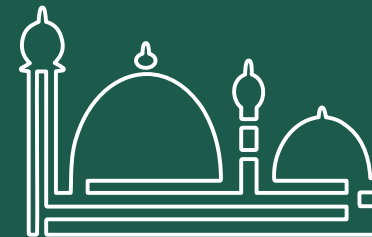
Crystal Lagoon
& Beachfront



Kids
play area



Parks



Mosque



7KM
Crystal Lagoon

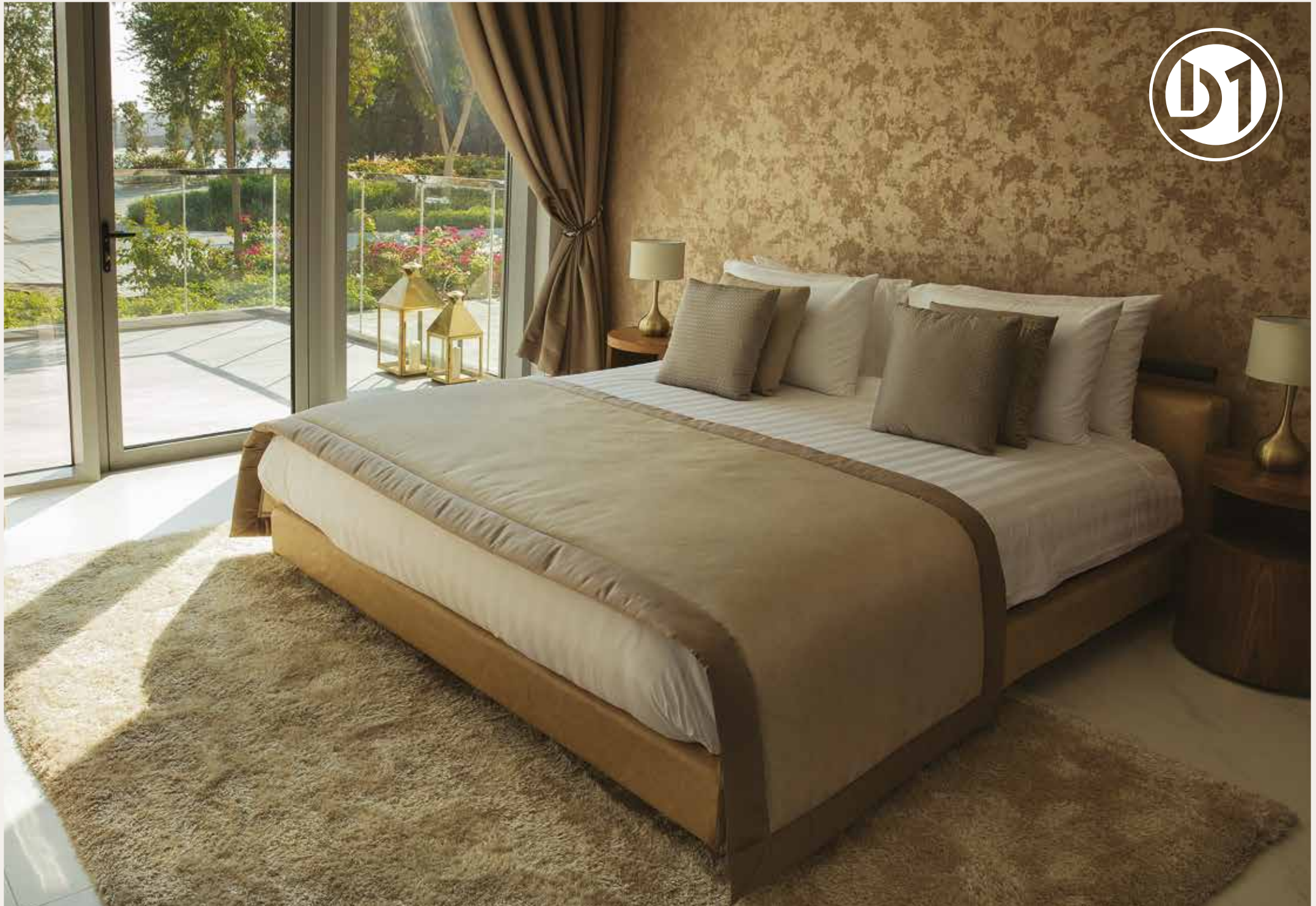
8.4 KM
Cycling and Running Track

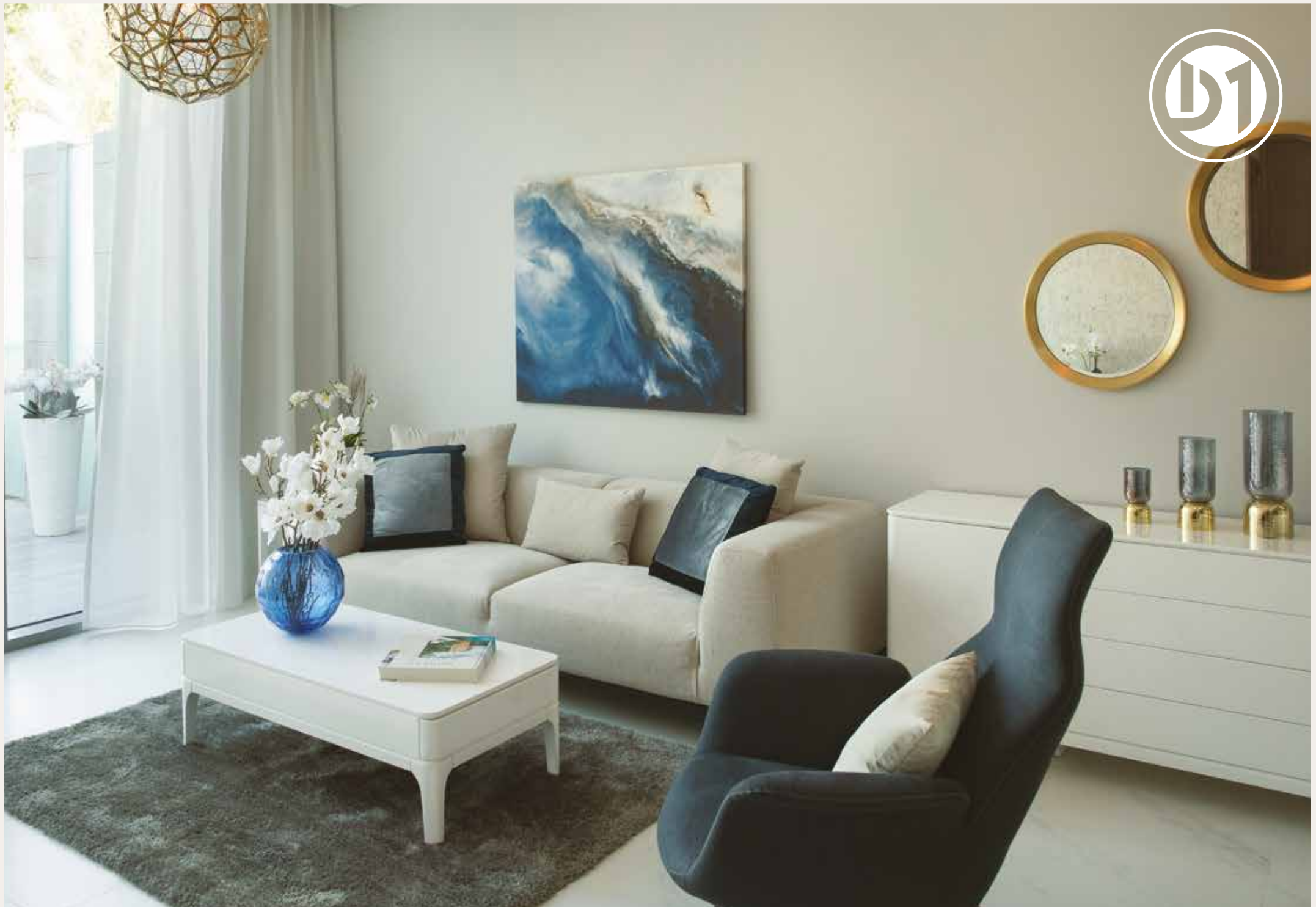




60%
Green Cover









MASTER PLAN



AL KHAIL ROAD

SALES CENTRE

7 KM CRYSTAL LAGOON

MEYDAN ONE

PHASE III RESIDENCES

8.4 KM CYCLING & RUNNING TRACK

TOWER LOCATION MAP



SEAGULL POINT
WATER HAS A NEW FRONT.

Disclaimer: The design layouts, dimensions, guidelines, visualizations, renderings, images and any other information as contained herein is provided for illustrative purposes only and subject to change at any time at the sole discretion of the Developer.

TOWER EXTERIOR



Disclaimer: The design layouts, dimensions, guidelines, visualizations, renderings, images and any other information as contained herein is provided for illustrative purposes only and subject to change at any time at the sole discretion of the Developer.

TOWER EXTERIOR & VIEWS



Disclaimer: The design layouts, dimensions, guidelines, visualizations, renderings, images and any other information as contained herein is provided for illustrative purposes only and subject to change at any time at the sole discretion of the Developer.

SEAGULL POINT TOWER 5TH TO 14TH FLOOR

1, 2 And 3 Bedroom Apartments



MEYDAN ONE



05-14



DISCLAIMER: All measurements, dimensions, coordinates and drawings given as the Floor Plans in this literature are approximate and provided only for the purpose of marketing, illustration, information and general guidance as such drawings are not to scale. All the rooms, sizes, locations, orientations, dimensions, fixtures, fittings, finishes and specifications (including materials for, placement, size of rooms, windows, doors, balcony, furniture's, inbuilt wardrobe etc.) provided in the floor plans may vary as the same have been taken from concept designs prior to the actual development/construction and therefore their accuracy in relation to actual construction cannot be confirmed. Hence, we make no guarantee, warranty or representation as to the accuracy and completeness of the Floor plan information as changes may be made during the development process, without notice. Always refer to latest IFC design available in the sales office for the most accurate representation of all construction details.

SEAGULL POINT TOWER 4TH FLOOR

1, 2 And 3 Bedroom Apartments



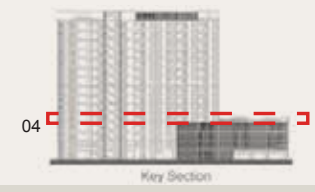
MEYDAN ONE



DUBAI SKYLINE

MEYDAN HOTEL

 3 BEDROOM
 2 BEDROOM
 1 BEDROOM



DISCLAIMER: All measurements, dimensions, coordinates and drawings given as the Floor Plans in this literature are approximate and provided only for the purpose of marketing, illustration, information and general guidance as such drawings are not to scale. All the rooms, sizes, locations, orientations, dimensions, fixtures, fittings, finishes and specifications (including materials for, placement, size of rooms, windows, doors, balcony, furniture's, inbuilt wardrobe etc.) provided in the floor plans may vary as the same have been taken from concept designs prior to the actual development/construction and therefore their accuracy in relation to actual construction cannot be confirmed. Hence, we make no guarantee, warranty or representation as to the accuracy and completeness of the Floor plan information as changes may be made during the development process, without notice. Always refer to latest IFC design available in the sales office for the most accurate representation of all construction details.

SEAGULL POINT TOWER 2ND TO 3RD FLOOR

1. 2 And 3 Bedroom Apartments



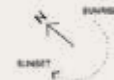
MEYDAN ONE

DUBAI SKYLINE

MEYDAN HOTEL



- 3 BEDROOM
- 2 BEDROOM
- 1 BEDROOM



02-03

Key Section

DISCLAIMER: All measurements, dimensions, coordinates and drawings given as the Floor Plans in this literature are approximate and provided only for the purpose of marketing, illustration, information and general guidance as such drawings are not to scale. All the rooms, sizes, locations, orientations, dimensions, fixtures, fittings, finishes and specifications (including materials for, placement, size of rooms, windows, doors, balcony, furniture's, inbuilt wardrobe etc.) provided in the floor plans may vary as the same have been taken from concept designs prior to the actual development/construction and therefore their accuracy in relation to actual construction cannot be confirmed. Hence, we make no guarantee, warranty or representation as to the accuracy and completeness of the Floor plan information as changes may be made during the development process, without notice. Always refer to latest IFC design available in the sales office for the most accurate representation of all construction details.

SEAGULL POINT TOWER 1ST FLOOR

1, 2 And 3 Bedroom Apartments



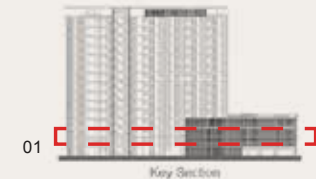
MEYDAN ONE

DUBAI SKYLINE

MEYDAN HOTEL



- 3 BEDROOM
- 2 BEDROOM
- 1 BEDROOM



01

Key Section

DISCLAIMER: All measurements, dimensions, coordinates and drawings given as the Floor Plans in this literature are approximate and provided only for the purpose of marketing, illustration, information and general guidance as such drawings are not to scale. All the rooms, sizes, locations, orientations, dimensions, fixtures, fittings, finishes and specifications (including materials for, placement, size of rooms, windows, doors, balcony, furniture's, inbuilt wardrobe etc.) provided in the floor plans may vary as the same have been taken from concept designs prior to the actual development/construction and therefore their accuracy in relation to actual construction cannot be confirmed. Hence, we make no guarantee, warranty or representation as to the accuracy and completeness of the Floor plan information as changes may be made during the development process, without notice. Always refer to latest IFC design available in the sales office for the most accurate representation of all construction details.

3 BEDROOM



1ST TO 14TH FLOORS

Suite Area:	1,515 - 1,531 Sqft
Balcony Area:	129 Sqft
Total Area:	1,644 - 1,660 Sqft



G+14
KEY PLAN

DISCLAIMER: All measurements, dimensions, coordinates and drawings given as the Floor Plans in this literature are approximate and provided only for the purpose of marketing, illustration, information and general guidance as such drawings are not to scale. All the rooms, sizes, locations, orientations, dimensions, fixtures, fittings, finishes and specifications (including materials for, placement, size of rooms, windows, doors, balcony, furniture's, inbuilt wardrobe etc.) provided in the floor plans may vary as the same have been taken from concept designs prior to the actual development/construction and therefore their accuracy in relation to actual construction cannot be confirmed. Hence, we make no guarantee, warranty or representation as to the accuracy and completeness of the Floor plan information as changes may be made during the development process, without notice. Always refer to latest IFC design available in the sales office for the most accurate representation of all construction details.

2 BEDROOM



1ST TO 14TH FLOORS

Suite Area:	977 - 1,108 Sqft
Balcony Area:	68 - 71 Sqft
Total Area:	1,045 - 1,179 Sqft



G+14
KEY PLAN

DISCLAIMER: All measurements, dimensions, coordinates and drawings given as the Floor Plans in this literature are approximate and provided only for the purpose of marketing, illustration, information and general guidance as such drawings are not to scale. All the rooms, sizes, locations, orientations, dimensions, fixtures, fittings, finishes and specifications (including materials for, placement, size of rooms, windows, doors, balcony, furniture's, inbuilt wardrobe etc.) provided in the floor plans may vary as the same have been taken from concept designs prior to the actual development/construction and therefore their accuracy in relation to actual construction cannot be confirmed. Hence, we make no guarantee, warranty or representation as to the accuracy and completeness of the Floor plan information as changes may be made during the development process, without notice. Always refer to latest IFC design available in the sales office for the most accurate representation of all construction details.

2 BEDROOM



1ST TO 14TH FLOORS



G+14
KEY PLAN

DISCLAIMER: All measurements, dimensions, coordinates and drawings given as the Floor Plans in this literature are approximate and provided only for the purpose of marketing, illustration, information and general guidance as such drawings are not to scale. All the rooms, sizes, locations, orientations, dimensions, fixtures, fittings, finishes and specifications (including materials for, placement, size of rooms, windows, doors, balcony, furniture's, inbuilt wardrobe etc.) provided in the floor plans may vary as the same have been taken from concept designs prior to the actual development/construction and therefore their accuracy in relation to actual construction cannot be confirmed. Hence, we make no guarantee, warranty or representation as to the accuracy and completeness of the Floor plan information as changes may be made during the development process, without notice. Always refer to latest IFC design available in the sales office for the most accurate representation of all construction details.

1 BEDROOM



1ST TO 14TH FLOORS

Suite Area:	607 - 612 Sqft
Balcony Area:	60 - 125 Sqft
Total Area:	668 - 737 Sqft



G+14
KEY PLAN



DISCLAIMER: All measurements, dimensions, coordinates and drawings given as the Floor Plans in this literature are approximate and provided only for the purpose of marketing, illustration, information and general guidance as such drawings are not to scale. All the rooms, sizes, locations, orientations, dimensions, fixtures, fittings, finishes and specifications (including materials for, placement, size of rooms, windows, doors, balcony, furniture's, inbuilt wardrobe etc.) provided in the floor plans may vary as the same have been taken from concept designs prior to the actual development/construction and therefore their accuracy in relation to actual construction cannot be confirmed. Hence, we make no guarantee, warranty or representation as to the accuracy and completeness of the Floor plan information as changes may be made during the development process, without notice. Always refer to latest IFC design available in the sales office for the most accurate representation of all construction details.

SEAGULL POINT TOWER GROUND FLOOR

1, 2 And 3 Bedroom Apartments



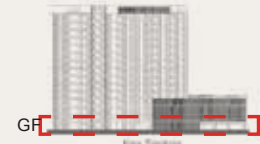
MEYDAN ONE



DUBAI SKYLINE

MEYDAN HOTEL

 3 BEDROOM
 2 BEDROOM
 1 BEDROOM



GF [Red dashed box] Floor Section

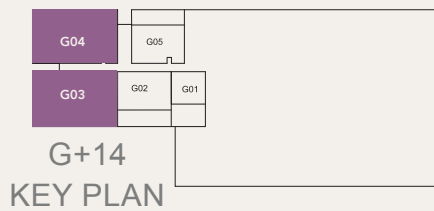
DISCLAIMER: All measurements, dimensions, coordinates and drawings given as the Floor Plans in this literature are approximate and provided only for the purpose of marketing, illustration, information and general guidance as such drawings are not to scale. All the rooms, sizes, locations, orientations, dimensions, fixtures, fittings, finishes and specifications (including materials for, placement, size of rooms, windows, doors, balcony, furniture's, inbuilt wardrobe etc.) provided in the floor plans may vary as the same have been taken from concept designs prior to the actual development/construction and therefore their accuracy in relation to actual construction cannot be confirmed. Hence, we make no guarantee, warranty or representation as to the accuracy and completeness of the Floor plan information as changes may be made during the development process, without notice. Always refer to latest IFC design available in the sales office for the most accurate representation of all construction details.

3 BEDROOM



GROUND FLOOR

Suite Area:	1,515 - 1,532 Sqft
Balcony Area:	1,029 - 1,030 Sqft
Total Area:	2,544 - 2,562 Sqft



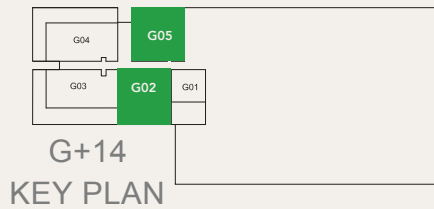
DISCLAIMER: All measurements, dimensions, coordinates and drawings given as the Floor Plans in this literature are approximate and provided only for the purpose of marketing, illustration, information and general guidance as such drawings are not to scale. All the rooms, sizes, locations, orientations, dimensions, fixtures, fittings, finishes and specifications (including materials for, placement, size of rooms, windows, doors, balcony, furniture's, inbuilt wardrobe etc.) provided in the floor plans may vary as the same have been taken from concept designs prior to the actual development/construction and therefore their accuracy in relation to actual construction cannot be confirmed. Hence, we make no guarantee, warranty or representation as to the accuracy and completeness of the Floor plan information as changes may be made during the development process, without notice. Always refer to latest IFC design available in the sales office for the most accurate representation of all construction details.

2 BEDROOM



GROUND FLOOR

Suite Area:	1,104 - 1,108 Sqft
Balcony Area:	447 - 457 Sqft
Total Area:	1,551 - 1,565 Sqft



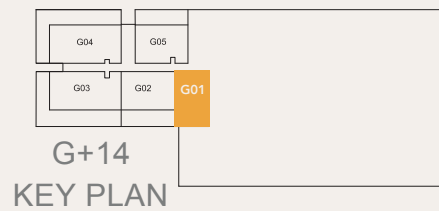
DISCLAIMER: All measurements, dimensions, coordinates and drawings given as the Floor Plans in this literature are approximate and provided only for the purpose of marketing, illustration, information and general guidance as such drawings are not to scale. All the rooms, sizes, locations, orientations, dimensions, fixtures, fittings, finishes and specifications (including materials for, placement, size of rooms, windows, doors, balcony, furniture's, inbuilt wardrobe etc.) provided in the floor plans may vary as the same have been taken from concept designs prior to the actual development/construction and therefore their accuracy in relation to actual construction cannot be confirmed. Hence, we make no guarantee, warranty or representation as to the accuracy and completeness of the Floor plan information as changes may be made during the development process, without notice. Always refer to latest IFC design available in the sales office for the most accurate representation of all construction details.

1 BEDROOM



GROUND FLOOR

Suite Area:	611 sq.ft
Terrace Area:	443 sq.ft
Total Area:	1054 sq.ft



DISCLAIMER: All measurements, dimensions, coordinates and drawings given as the Floor Plans in this literature are approximate and provided only for the purpose of marketing, illustration, information and general guidance as such drawings are not to scale. All the rooms, sizes, locations, orientations, dimensions, fixtures, fittings, finishes and specifications (including materials for, placement, size of rooms, windows, doors, balcony, furniture's, inbuilt wardrobe etc.) provided in the floor plans may vary as the same have been taken from concept designs prior to the actual development/construction and therefore their accuracy in relation to actual construction cannot be confirmed. Hence, we make no guarantee, warranty or representation as to the accuracy and completeness of the Floor plan information as changes may be made during the development process, without notice. Always refer to latest IFC design available in the sales office for the most accurate representation of all construction details.



PAYMENT PLAN

Booking Amount*	1 st Instalment*	2 nd Instalment*	3 rd Instalment*
10%	5%	5%	5%
Upon From Booking*	180 Days From Booking*	10% Construction	20% Construction
4 th Instalment*	5 th Instalment*	6 th Instalment*	Final Instalment*
5%	10%	10%	50%
30% Construction	40% Construction	50% Construction	On Completion

*Terms & Conditions Apply.



**MOHAMMED BIN RASHID
AL MAKTOUM CITY**

DISTRICT ONE

800 111 111 - district1.com