

# SEAGULL POINT TOWER 5TH TO 14TH FLOOR

## 1, 2 And 3 Bedroom Apartments



MEYDAN ONE



**DISCLAIMER:** All measurements, dimensions, coordinates and drawings given as the Floor Plans in this literature are approximate and provided only for the purpose of marketing, illustration, information and general guidance as such drawings are not to scale. All the rooms, sizes, locations, orientations, dimensions, fixtures, fittings, finishes and specifications (including materials for, placement, size of rooms, windows, doors, balcony, furniture's, inbuilt wardrobe etc.) provided in the floor plans may vary as the same have been taken from concept designs prior to the actual development/construction and therefore their accuracy in relation to actual construction cannot be confirmed. Hence, we make no guarantee, warranty or representation as to the accuracy and completeness of the Floor plan information as changes may be made during the development process, without notice. Always refer to latest IFC design available in the sales office for the most accurate representation of all construction details.

# SEAGULL POINT TOWER 4TH FLOOR

## 1, 2 And 3 Bedroom Apartments



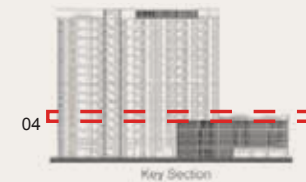
MEYDAN ONE

DUBAI SKYLINE



MEYDAN HOTEL

  3 BEDROOM  
   2 BEDROOM  
   1 BEDROOM



Key Section

DISCLAIMER: All measurements, dimensions, coordinates and drawings given as the Floor Plans in this literature are approximate and provided only for the purpose of marketing, illustration, information and general guidance as such drawings are not to scale. All the rooms, sizes, locations, orientations, dimensions, fixtures, fittings, finishes and specifications (including materials for, placement, size of rooms, windows, doors, balcony, furniture's, inbuilt wardrobe etc.) provided in the floor plans may vary as the same have been taken from concept designs prior to the actual development/construction and therefore their accuracy in relation to actual construction cannot be confirmed. Hence, we make no guarantee, warranty or representation as to the accuracy and completeness of the Floor plan information as changes may be made during the development process, without notice. Always refer to latest IFC design available in the sales office for the most accurate representation of all construction details.

# SEAGULL POINT TOWER 2ND TO 3RD FLOOR

## 1. 2 And 3 Bedroom Apartments



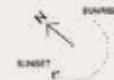
MEYDAN ONE

DUBAI SKYLINE

MEYDAN HOTEL



- 3 BEDROOM
- 2 BEDROOM
- 1 BEDROOM



02-03

Key Section

**DISCLAIMER:** All measurements, dimensions, coordinates and drawings given as the Floor Plans in this literature are approximate and provided only for the purpose of marketing, illustration, information and general guidance as such drawings are not to scale. All the rooms, sizes, locations, orientations, dimensions, fixtures, fittings, finishes and specifications (including materials for, placement, size of rooms, windows, doors, balcony, furniture's, inbuilt wardrobe etc.) provided in the floor plans may vary as the same have been taken from concept designs prior to the actual development/construction and therefore their accuracy in relation to actual construction cannot be confirmed. Hence, we make no guarantee, warranty or representation as to the accuracy and completeness of the Floor plan information as changes may be made during the development process, without notice. Always refer to latest IFC design available in the sales office for the most accurate representation of all construction details.

# SEAGULL POINT TOWER 1ST FLOOR

## 1, 2 And 3 Bedroom Apartments



MEYDAN ONE

DUBAI SKYLINE

MEYDAN HOTEL



- 3 BEDROOM
- 2 BEDROOM
- 1 BEDROOM



01

Key Section

DISCLAIMER: All measurements, dimensions, coordinates and drawings given as the Floor Plans in this literature are approximate and provided only for the purpose of marketing, illustration, information and general guidance as such drawings are not to scale. All the rooms, sizes, locations, orientations, dimensions, fixtures, fittings, finishes and specifications (including materials for, placement, size of rooms, windows, doors, balcony, furniture's, inbuilt wardrobe etc.) provided in the floor plans may vary as the same have been taken from concept designs prior to the actual development/construction and therefore their accuracy in relation to actual construction cannot be confirmed. Hence, we make no guarantee, warranty or representation as to the accuracy and completeness of the Floor plan information as changes may be made during the development process, without notice. Always refer to latest IFC design available in the sales office for the most accurate representation of all construction details.

# 3 BEDROOM



1ST TO 14TH FLOORS

Suite Area:	1,515 - 1,531 Sqft
Balcony Area:	129 Sqft
Total Area:	1,644 - 1,660 Sqft



G+14  
KEY PLAN

DISCLAIMER: All measurements, dimensions, coordinates and drawings given as the Floor Plans in this literature are approximate and provided only for the purpose of marketing, illustration, information and general guidance as such drawings are not to scale. All the rooms, sizes, locations, orientations, dimensions, fixtures, fittings, finishes and specifications (including materials for, placement, size of rooms, windows, doors, balcony, furniture's, inbuilt wardrobe etc.) provided in the floor plans may vary as the same have been taken from concept designs prior to the actual development/construction and therefore their accuracy in relation to actual construction cannot be confirmed. Hence, we make no guarantee, warranty or representation as to the accuracy and completeness of the Floor plan information as changes may be made during the development process, without notice. Always refer to latest IFC design available in the sales office for the most accurate representation of all construction details.

# 2 BEDROOM



## 1ST TO 14TH FLOORS

Suite Area:	977 - 1,108 Sqft
Balcony Area:	68 - 71 Sqft
Total Area:	1,045 - 1,179 Sqft



G+14  
KEY PLAN

DISCLAIMER: All measurements, dimensions, coordinates and drawings given as the Floor Plans in this literature are approximate and provided only for the purpose of marketing, illustration, information and general guidance as such drawings are not to scale. All the rooms, sizes, locations, orientations, dimensions, fixtures, fittings, finishes and specifications (including materials for, placement, size of rooms, windows, doors, balcony, furniture's, inbuilt wardrobe etc.) provided in the floor plans may vary as the same have been taken from concept designs prior to the actual development/construction and therefore their accuracy in relation to actual construction cannot be confirmed. Hence, we make no guarantee, warranty or representation as to the accuracy and completeness of the Floor plan information as changes may be made during the development process, without notice. Always refer to latest IFC design available in the sales office for the most accurate representation of all construction details.

# 2 BEDROOM



1ST TO 14TH FLOORS



G+14  
KEY PLAN

DISCLAIMER: All measurements, dimensions, coordinates and drawings given as the Floor Plans in this literature are approximate and provided only for the purpose of marketing, illustration, information and general guidance as such drawings are not to scale. All the rooms, sizes, locations, orientations, dimensions, fixtures, fittings, finishes and specifications (including materials for, placement, size of rooms, windows, doors, balcony, furniture's, inbuilt wardrobe etc.) provided in the floor plans may vary as the same have been taken from concept designs prior to the actual development/construction and therefore their accuracy in relation to actual construction cannot be confirmed. Hence, we make no guarantee, warranty or representation as to the accuracy and completeness of the Floor plan information as changes may be made during the development process, without notice. Always refer to latest IFC design available in the sales office for the most accurate representation of all construction details.

# 1 BEDROOM



## 1ST TO 14TH FLOORS

Suite Area:	607 - 612 Sqft
Balcony Area:	60 - 125 Sqft
Total Area:	668 - 737 Sqft



G+14  
KEY PLAN



DISCLAIMER: All measurements, dimensions, coordinates and drawings given as the Floor Plans in this literature are approximate and provided only for the purpose of marketing, illustration, information and general guidance as such drawings are not to scale. All the rooms, sizes, locations, orientations, dimensions, fixtures, fittings, finishes and specifications (including materials for, placement, size of rooms, windows, doors, balcony, furniture's, inbuilt wardrobe etc.) provided in the floor plans may vary as the same have been taken from concept designs prior to the actual development/construction and therefore their accuracy in relation to actual construction cannot be confirmed. Hence, we make no guarantee, warranty or representation as to the accuracy and completeness of the Floor plan information as changes may be made during the development process, without notice. Always refer to latest IFC design available in the sales office for the most accurate representation of all construction details.



# SEAGULL POINT TOWER GROUND FLOOR

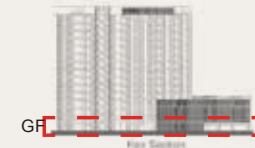
## 1, 2 And 3 Bedroom Apartments



MEYDAN ONE



  3 BEDROOM
   2 BEDROOM
   1 BEDROOM



GF

Fly Section

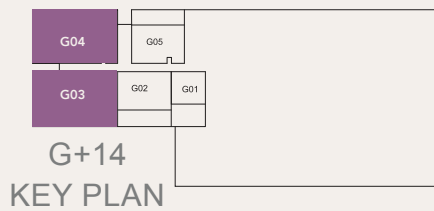
DISCLAIMER: All measurements, dimensions, coordinates and drawings given as the Floor Plans in this literature are approximate and provided only for the purpose of marketing, illustration, information and general guidance as such drawings are not to scale. All the rooms, sizes, locations, orientations, dimensions, fixtures, fittings, finishes and specifications (including materials for, placement, size of rooms, windows, doors, balcony, furniture's, inbuilt wardrobe etc.) provided in the floor plans may vary as the same have been taken from concept designs prior to the actual development/construction and therefore their accuracy in relation to actual construction cannot be confirmed. Hence, we make no guarantee, warranty or representation as to the accuracy and completeness of the Floor plan information as changes may be made during the development process, without notice. Always refer to latest IFC design available in the sales office for the most accurate representation of all construction details.

# 3 BEDROOM



## GROUND FLOOR

Suite Area:	1,515 - 1,532 Sqft
Balcony Area:	1,029 - 1,030 Sqft
Total Area:	2,544 - 2,562 Sqft



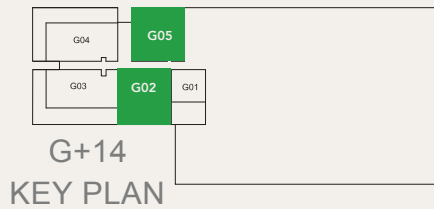
DISCLAIMER: All measurements, dimensions, coordinates and drawings given as the Floor Plans in this literature are approximate and provided only for the purpose of marketing, illustration, information and general guidance as such drawings are not to scale. All the rooms, sizes, locations, orientations, dimensions, fixtures, fittings, finishes and specifications (including materials for, placement, size of rooms, windows, doors, balcony, furniture's, inbuilt wardrobe etc.) provided in the floor plans may vary as the same have been taken from concept designs prior to the actual development/construction and therefore their accuracy in relation to actual construction cannot be confirmed. Hence, we make no guarantee, warranty or representation as to the accuracy and completeness of the Floor plan information as changes may be made during the development process, without notice. Always refer to latest IFC design available in the sales office for the most accurate representation of all construction details.

# 2 BEDROOM



## GROUND FLOOR

Suite Area:	1,104 - 1,108 Sqft
Balcony Area:	447 - 457 Sqft
Total Area:	1,551 - 1,565 Sqft



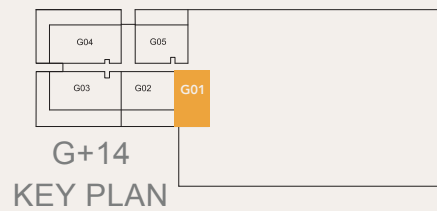
DISCLAIMER: All measurements, dimensions, coordinates and drawings given as the Floor Plans in this literature are approximate and provided only for the purpose of marketing, illustration, information and general guidance as such drawings are not to scale. All the rooms, sizes, locations, orientations, dimensions, fixtures, fittings, finishes and specifications (including materials for, placement, size of rooms, windows, doors, balcony, furniture's, inbuilt wardrobe etc.) provided in the floor plans may vary as the same have been taken from concept designs prior to the actual development/construction and therefore their accuracy in relation to actual construction cannot be confirmed. Hence, we make no guarantee, warranty or representation as to the accuracy and completeness of the Floor plan information as changes may be made during the development process, without notice. Always refer to latest IFC design available in the sales office for the most accurate representation of all construction details.

# 1 BEDROOM



## GROUND FLOOR

Suite Area:	611 sq.ft
Terrace Area:	443 sq.ft
Total Area:	1054 sq.ft



DISCLAIMER: All measurements, dimensions, coordinates and drawings given as the Floor Plans in this literature are approximate and provided only for the purpose of marketing, illustration, information and general guidance as such drawings are not to scale. All the rooms, sizes, locations, orientations, dimensions, fixtures, fittings, finishes and specifications (including materials for, placement, size of rooms, windows, doors, balcony, furniture's, inbuilt wardrobe etc.) provided in the floor plans may vary as the same have been taken from concept designs prior to the actual development/construction and therefore their accuracy in relation to actual construction cannot be confirmed. Hence, we make no guarantee, warranty or representation as to the accuracy and completeness of the Floor plan information as changes may be made during the development process, without notice. Always refer to latest IFC design available in the sales office for the most accurate representation of all construction details.



# PAYMENT PLAN

Booking Amount*	1 <sup>st</sup> Instalment*	2 <sup>nd</sup> Instalment*	3 <sup>rd</sup> Instalment*
10%	5%	5%	5%
Upon From Booking*	180 Days From Booking*	10% Construction	20% Construction
4 <sup>th</sup> Instalment*	5 <sup>th</sup> Instalment*	6 <sup>th</sup> Instalment*	Final Instalment*
5%	10%	10%	50%
30% Construction	40% Construction	50% Construction	On Completion



**MOHAMMED BIN RASHID  
AL MAKTOUM CITY**

**DISTRICT ONE**

800 111 111 - [district1.com](http://district1.com)