

FAMILY.  
HEALTH.  
WORK.

YOU CAN HAVE IT ALL

AT

GOLF GROVE

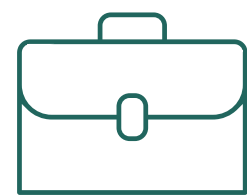
IN DUBAI HILLS



When it comes to work-life balance,  
it's common knowledge that you can  
only have 2 out of 3.



FAMILY



WORK



HEALTH

# HAVE IT ALL AT GOLF GROVE

## FAMILY

Spend precious moments with your loved ones.

## HEALTH

Take care of your mind, body and soul.

## WORK

Live closer to work so that you can devote your  
time to what you find most important.

1

---

FAMILY





FAMILY

## LIVE LIFE ON THE GREEN

An exclusive neighbourhood surrounded by parks and rolling fairways, Golf Grove is a breath of fresh air from the hustle of everyday life.

Set in a family-oriented community, its 3 and 4 bedroom villas range from 2930 sq ft to 3365 sq ft of sheer serenity and elegance.

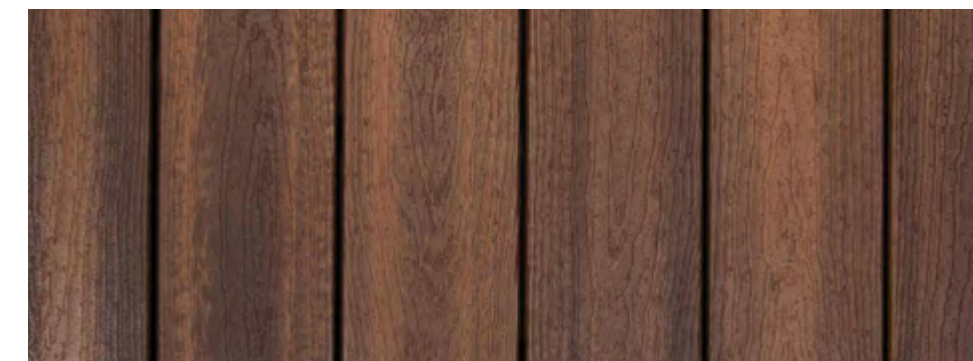
# YOUR ROOFTOP HAVEN



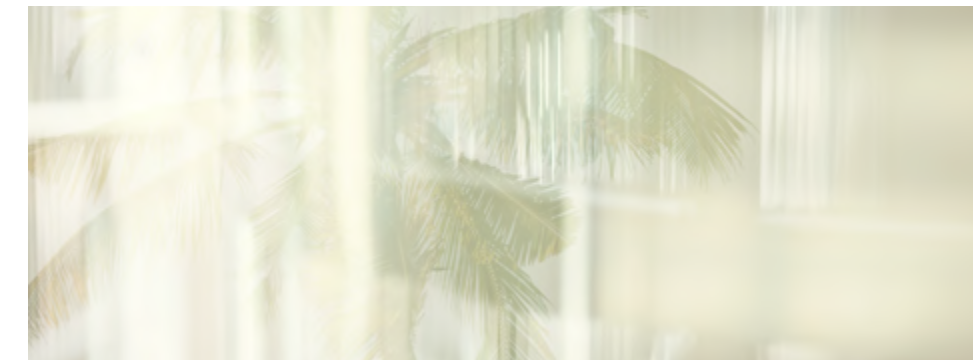
# WHERE YOU BELONG

Each villa reflects a wholesome family aesthetic, complemented by plenty of natural light and a profusion of fresh greenery right outside your window.

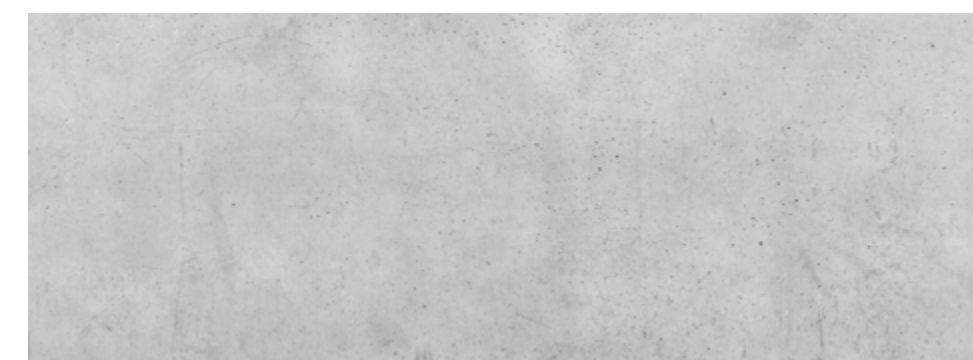
Choose from three architectural styles that cater to every individual's material palette, each with a private rooftop terrace.



EAMES  
3 BEDROOM



SAVOYE  
3 BEDROOM



AALTO  
4 BEDROOM



# EAMES

3 BEDROOM

Modern stand-alone villas  
with deep inset walls,  
glazing and shadow-casting  
window screens.





# SAVOYE

## 3 BEDROOM

Contemporary villas with a striking emphasis on the mass of the building for a compact, clean-cut look.







# AALTO

4 BEDROOM

Modern villas consisting of clean lines, a simple material palette and panoramic views of nature.

# PLAN FOR A BRIGHT FUTURE

The three schools in the neighbourhood make Golf Grove the ideal family location. With choices such as Gems International School, world-class education facilities and wonderful places for your little ones to play post school, you are guaranteed to build brighter futures.

**GEMS**  
EDUCATION





2

---

HEALTH



HEALTH

## THE GREEN HEART OF DUBAI

With an 18-Hole Championship Golf Course at your doorstep and an impressive range of opportunities for the whole family to stay fit, Golf Grove is conceived to promote well-being and harmony.

# A GOLFER'S DREAM DESTINATION

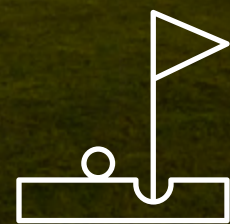
Operated by Troon Golf, this 18-hole par-72 championship course is as challenging as it is stunning. Spanning 1.2 million sq m, the course meanders through a series of valleys and wadis with Downtown Dubai as its backdrop.



Designed by  
European Golf Design



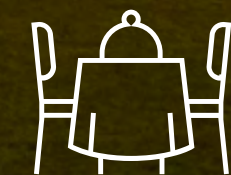
Golf club  
academy



Practice  
facility

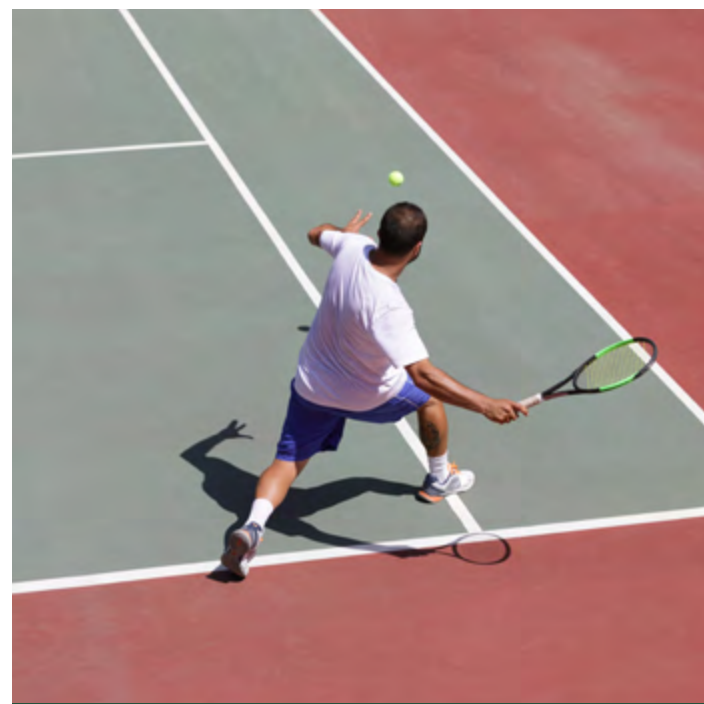


With 83  
bunkers



F&B  
outlets

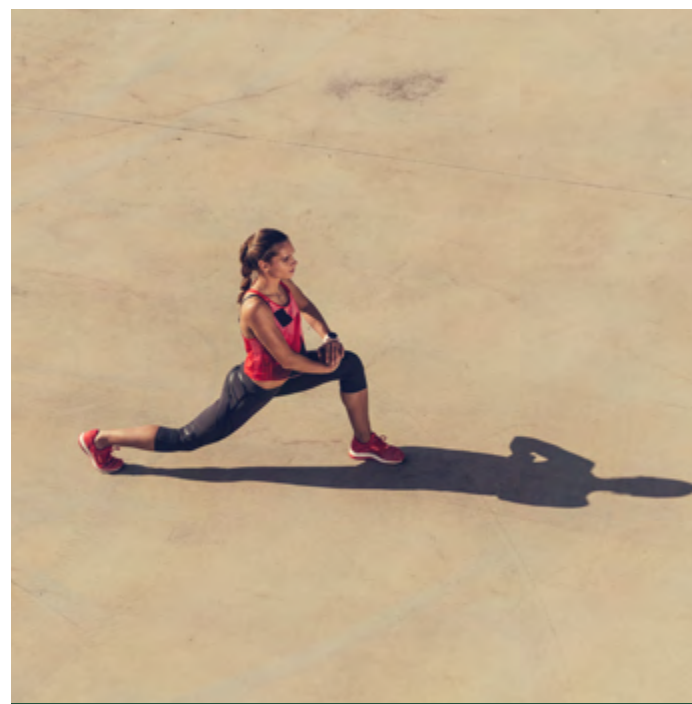
# AN ACTIVE COMMUNITY



Tennis  
court



Half basketball  
court



Outdoor  
fitness areas



Nature trails  
& shaded areas



Cycle paths



Children's  
play areas

Go for a vigorous workout at one of the many sports facilities dotted around the neighbourhood, while your little ones let loose in the shaded play areas.





# THE HIGHEST QUALITY HEALTHCARE

A safe and child-friendly neighbourhood, Golf Grove is also in close proximity to two hospitals including the internationally renowned King's College Hospital.



3

---

WORK





WORK

# EVERYTHING WITHIN REACH

With its close proximity to commercial hubs such as Downtown Dubai, Golf Grove saves your time on the daily commute and brings you closer to all the comforts and conveniences your family needs including schools, hospitals and metro stations.

20-min

Drive from Dubai's main destinations (approx)

15-min

Drive to Downtown Dubai and Dubai Marina



Easy access to Sheikh Mohammed bin Zayed Rd





# DUBAI HILLS ESTATE

Surrounded by pristine fairways and lush gardens with stunning views of the Dubai skyline, Dubai Hills Estate is the perfect blend of luxury and outdoor living. With a rich array of lifestyle destinations, it is destined to be an irresistible lure for residents and tourists alike.

# YOUR SHOPPING & LIFESTYLE DESTINATION

Only minutes away from Golf Grove, Dubai Hills Mall is the city's new centre of shopping, entertainment and leisure. Conveniently located on the crossroads of Umm Suqeim Road and Al Khail Road, the mall grants you:



Hypermarket



Reel Cinema



Over 650  
Shopping &  
Dining outlets



Family  
Entertainment  
Outlets



2 million sq ft  
of Retail  
Indulgence



# KEY FACTS



6,800,000 SQ M  
GFA



1,800,000 SQ M  
Offices Space



1,450,000 SQ M  
Parks &  
Open Space



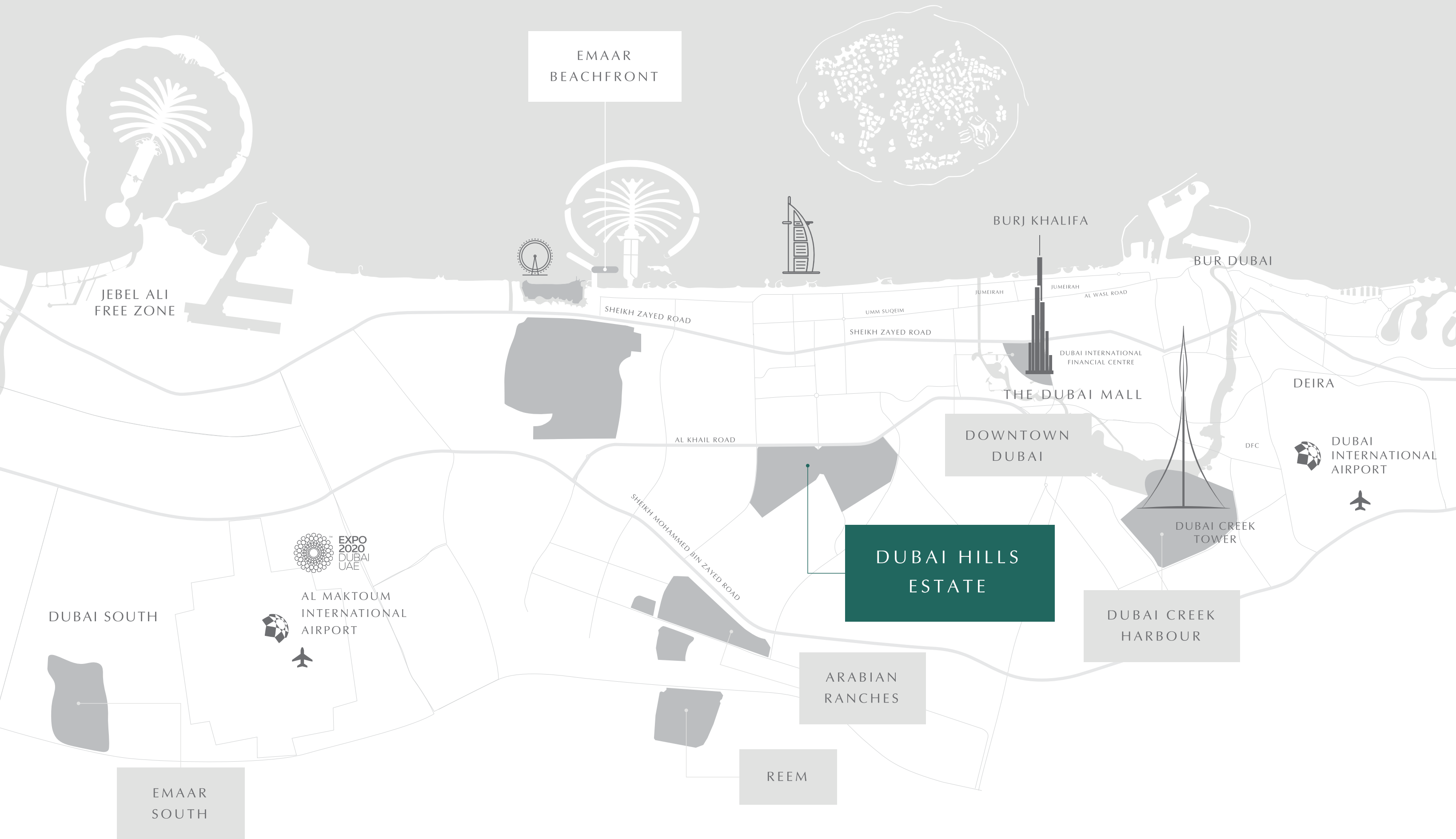
1,120,000 SQ M  
18-Hole Golf Course  
with 60 Maisonettes



15  
Minutes to  
Downtown  
Dubai



20  
Minutes to  
Dubai Int'l  
Airport





# THE STRENGTH OF EMAAR

Established in 1997, we are the pioneering developer of integrated, master-planned communities in the UAE and 12 countries around the world.

MARKET CAP

USD

12.47BN

FY 2018

REVENUE

USD

5.12BN

FY 2017

NET PROFIT

USD

1.55BN

FY 2017

LAND BANK

167MN

SQUARE METRES

TOTAL UNITS  
DELIVERED FY 2017

45,900+

RESIDENTIAL UNITS  
DELIVERED SINCE 2002

UNITS UNDER  
CONSTRUCTION

43,000+

FY 2017



For more information on **GOLF GROVE** in **DUBAI HILLS**,  
please call 800 36227 (UAE) or +971 4 366 1688 (International).

Visit our online sales centre at [emaar.com](https://www.emaar.com) or  
any of our Sales Centres across the UAE.

#### DUBAI

Emaar Sales Centre | Downtown Dubai

Dubai Hills Estate Sales Pavilion | Umm Suqeim Road

Dubai Creek Harbour Sales Pavilion | Ras Al Khor

Emaar South Sales Centre | DWC Peripheral Road

#### ABU DHABI

Emaar Sales Centre | Al Nahda Tower, Ground Floor, 4th Street, Corniche, Al Muroor Road

9:30am to 7pm Saturday - Thursday

Friday from 2:00 pm to 7:00 pm (all locations except the Abu Dhabi Sales Centre)

# EMAAR