

Mon Rêve
at burj khalifa district

Message from the President

Credo has always been on the forefront of providing outstanding residential and commercial developments in the United Arab Emirates. As a name, we have been synonymous with excellence from the very beginning. This is reflected from our developments; Le Solarium, The Prism and Le Presidium. In a line of successes, we at Credo are taking the next step towards building signature luxury residences.

Located in the Burj Khalifa district, this new masterpiece brings us a step closer to achieving our dream. Presenting Mon Rêve, which means 'My Dream' in French. We welcome you to be a part of it.

Hon. Sajjad M Rashid
President - Credo Investments FZE



A Dream is Unveiled

Celebrate Mon Rêve. A new signature space from Credo, in the heart of Dubai's busiest commercial and business sector, the Burj Khalifa District. The most dominant structure in the vicinity is the Burj Khalifa, an icon of marvel and a symbol of pride. Sharing the limelight of the locality is the glamorous Dubai Mall, your one stop-shop for everything under the sun. Amidst chic surroundings, built of the best and most modern, energy-efficient materials, the anticipated completion of Mon Rêve is Q2 2016.

With superior quality finishes, high ceilings, floor-to-ceiling windows, a choice of 1, 2, 3 Bedrooms and Duplex Mall View apartments, we have left no stone unturned to create a benchmark in luxury housing. Carrying forward the legacy of our prestigious past projects like Le Solarium, The Prism and Le Presidium, Mon Rêve is one special gift, wrapped in luxury you can't wait to discover.





Mon Rêve begins with an enthralling entrance that unravels the dreamscape, green lush gardens and an exquisite lobby flanked by swanky glass and warm ambient light features. Here, the scent of luxury and the aroma of success overtakes you slowly. It is created with an intelligent design module giving easy access to any part of the building.



Splendor lies in serenity. The warm twinkling lights with the cool breeze all fill your room at the same time. Because this is the grande Mall View Residence. Directly overlooking the global shopping destination of millions, The Dubai Mall, this part of Mon Rêve is perfect for those who love to have a great view along with having everything within easy reach.





To call our interiors spacious, would be an understatement. The sprawling living space, the attention to detail and the adherence to superior quality speak volumes. This has resulted in creating a true masterpiece that will soon be your personal abode.



Home is the personification of comfort. A place to unwind, relax and be yourself. Exactly why we have temperature-controlled rooftop pools with a touch of infinity, comfortable recliners for every aching muscle of your body. Some may call it pampering, but for you, it is home.





For the more health conscious among us, there is a state-of-the-art gymnasium, a jogging track and professional tennis court. We've made your convenience our top priority, with 4 High Speed elevators, visitor parking and airy spaces.



The Burj Khalifa District is the place to be! With its kaleidoscopic nightlife, luxury retail stores, fashionable cafes and tree lined boulevards that twinkle at night, you couldn't ask to be in a more exciting locale. Mon Rêve enjoys close proximity to The Dubai Mall, Sheikh Mohammed Bin Rashid Boulevard and the Burj Park and makes our property the most desirable address to enjoy.





The iconic exteriors are just the beginning. The master touch of the interiors redefine the very element of luxury with warm colors sprinkled with some of the most exclusive metals found on Earth. The view from every side and angle will not only make you admire the grandeur of Dubai, but also inspire you for success at the same time.



With some of the greatest views, exclusive amenities and signature architecture you can call home, this is one place where luxury is born. Being in the heart of a business district and a roundabout away from the iconic Dubai Mall, Mon Rêve is where the dream is unveiled. Be there to experience it.





The Credo Legacy

Credo Investments FZE has partnered with industry virtuosos in design, architecture and construction. We consider The Prism Tower in Business Bay, Le Solarium at Dubai Silicon Oasis and Le Presidium as iconic marvels of the modern architectural landscape.

Our trademark design language and signature architecture models have been the talk of the town since a long time. But leaving behind every single milestone we have achieved, we continue our stride towards perfection.

We envisage a grand tomorrow, building remarkable icons of prestige and honor. This is the very philosophy of Credo and this is what defines us.



Developer Name: Credo Investments FZE
Project Name: Mon Rêve
Developer Registration No: 356
Project No: 1558

Trustee Account: Emirates NBD Bank (P.J.S.C.)
Escrow Account No: 0204933374901

Expected Completion Date: 2nd Quarter 2016
Estimated Service Charges: AED 22 to 25 Per Sq. Ft.

Mon Rêve
at burj khalifa district
FLOOR PLANS

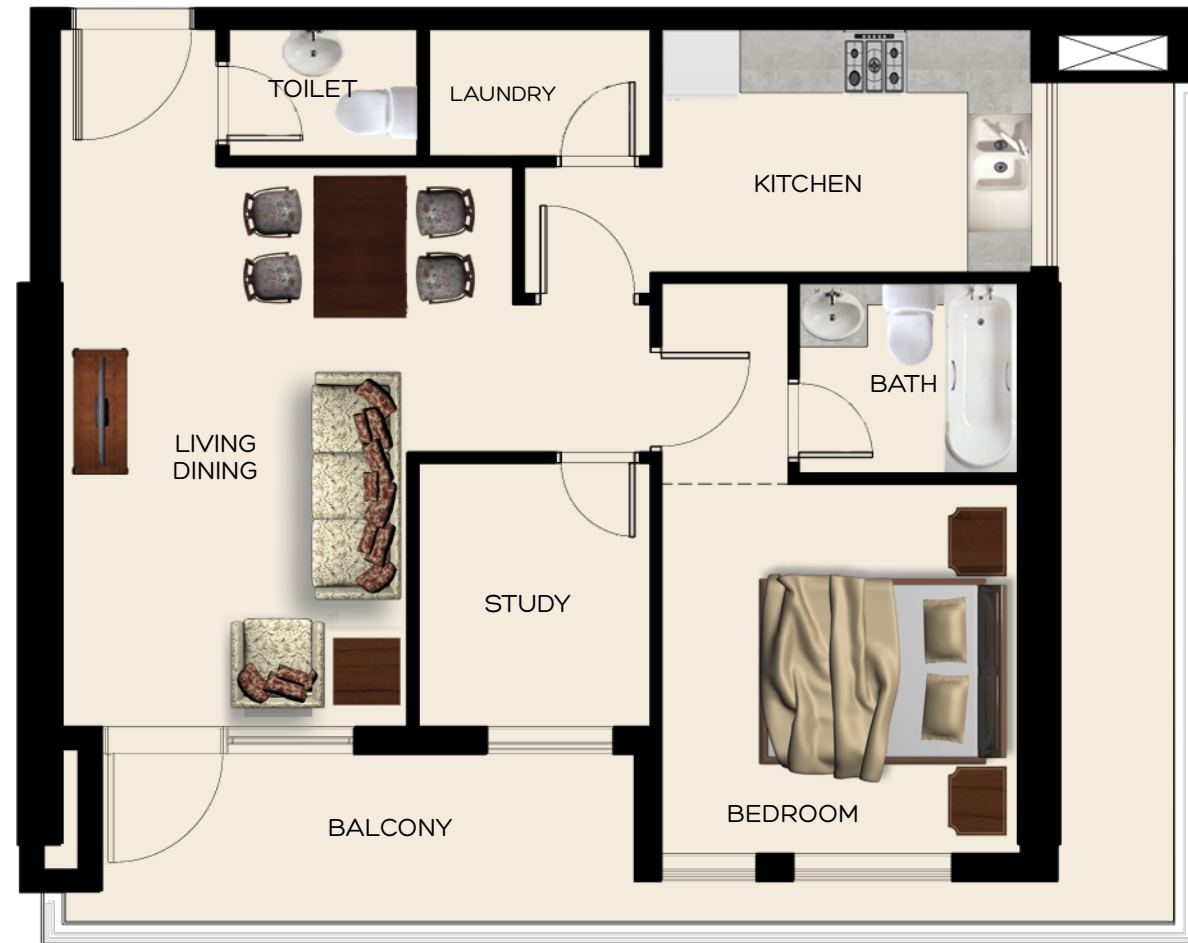
ONE BEDROOM
UNIT TYPE - 1A
UNIT - 07 & 08
LEVEL - 05 - 10



SUITE AREA:	750.67 (SQ.FT)
BALCONY AREA:	110.33 (SQ.FT)
TOTAL AREA:	862.40 (SQ.FT)

Note: 1. All room dimensions are in imperial and measured to structural elements and exclude wall finishes and construction tolerances. 2. All dimensions have been provided by our consultant architects. 3. All materials dimensions and drawings are approximate. Information subject to change without notice. 4. Actual suite area may vary from the stated area. Drawings not to scale E8EO. The developer reserves the right to make revisions. 5. Calculation of suite area is measured as the area bounded by the center line of demising or party walls separating one unit from another unit, the exterior surface of all exterior walls, and the exterior surface of the corridor wall enclosing and abutting the unit. 6. Calculation of balcony area is measured as the area bounded by the center lines of demising or party walls separating one unit from another unit, the outermost face of the enclosing guard and the external face of the site abutting the balcony. 7. Furniture is indicative only and excluded from the scope.

ONE BEDROOM
UNIT TYPE - 1B
UNIT - 09
LEVEL - 05

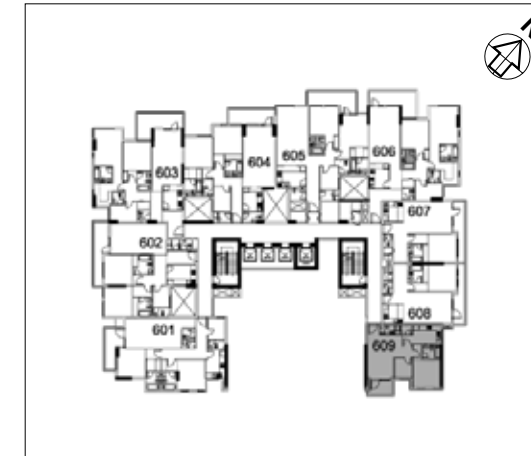
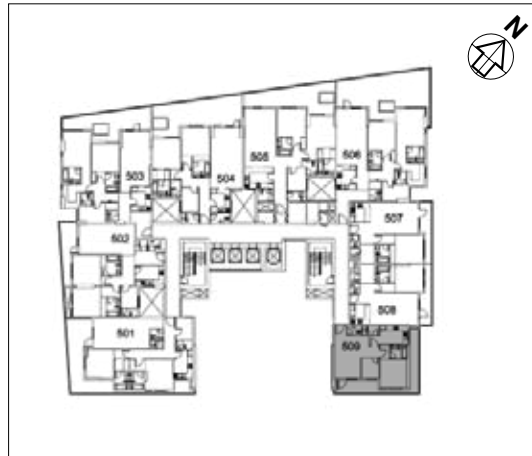


SUITE AREA: 785.11 (SQ.FT)
BALCONY AREA: 251.55 (SQ.FT)
TOTAL AREA: 1036.66 (SQ.FT)

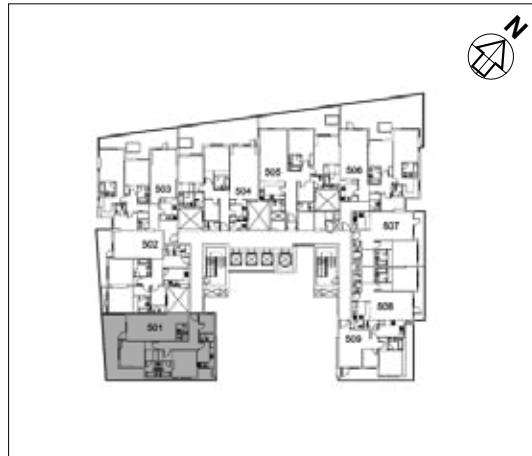
ONE BEDROOM
UNIT TYPE - 1C
UNIT - 09
LEVEL - 06 - 10



SUITE AREA: 786.41 (SQ.FT)
BALCONY AREA: 77.93 (SQ.FT)
TOTAL AREA: 864.34 (SQ.FT)

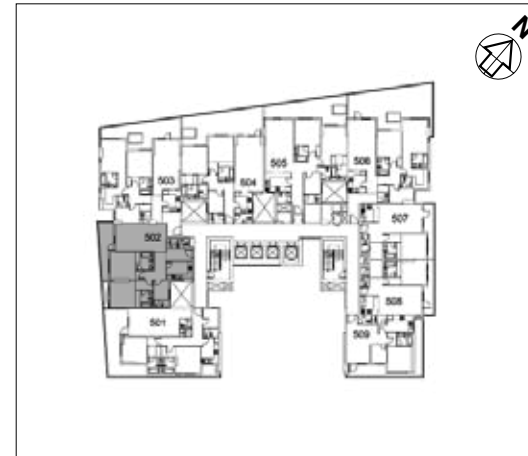


TWO BEDROOM + MAID'S ROOM
UNIT TYPE - 2B
UNIT - 01
LEVEL - 05



SUITE AREA: 1240.64 (SQ.FT)
BALCONY AREA: 152.52 (SQ.FT)
TOTAL AREA: 1393.16 (SQ.FT)

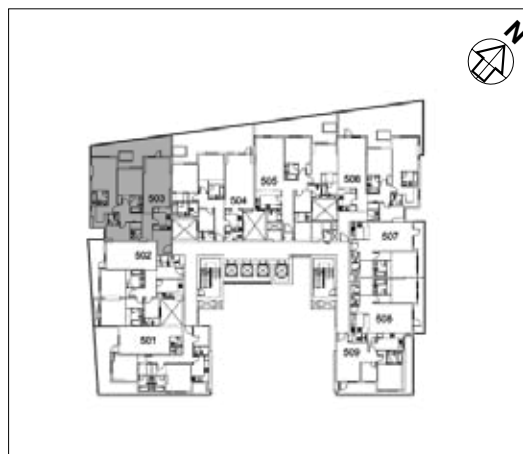
TWO BEDROOM + MAID'S ROOM
UNIT TYPE - 2A
UNIT - 02
LEVEL - 05



SUITE AREA: 1263.89 (SQ.FT)
BALCONY AREA: 408.05 (SQ.FT)
TOTAL AREA: 1671.94 (SQ.FT)



TWO BEDROOM + MAID'S ROOM
UNIT TYPE - 2C
UNIT - 03
LEVEL - 05

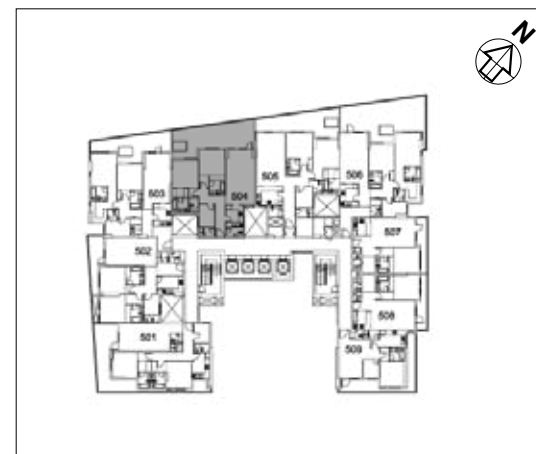


SUITE AREA: 1397.26 (SQ.FT)
BALCONY AREA: 334.86 (SQ.FT)
TOTAL AREA: 1732.12 (SQ.FT)

Note: 1. All room dimensions are in imperial and measured to structural elements and exclude wall finishes and construction tolerances. 2. All dimensions have been provided by our consultant architects. 3. All materials dimensions and drawings are approximate. Information subject to change without notice. 4. Actual suite area may vary from the stated area. Drawings not to scale E6E0. The developer reserves the right to make revisions. 5. Calculation of suite area is measured as the area bounded by the center line of demising or party walls separating one unit from another unit, the exterior surface of all exterior walls, and the exterior surface of the corridor wall enclosing and abutting the unit. 6. Calculation of balcony area is measured as the area bounded by the centre lines of demising or party walls separating one unit from another unit, the outermost face of the enclosing guard and the external face of the site abutting the balcony. 7. Furniture is indicative only and excluded from the scope.



TWO BEDROOM + MAID'S ROOM
UNIT TYPE - 2D
UNIT - 04
LEVEL - 05

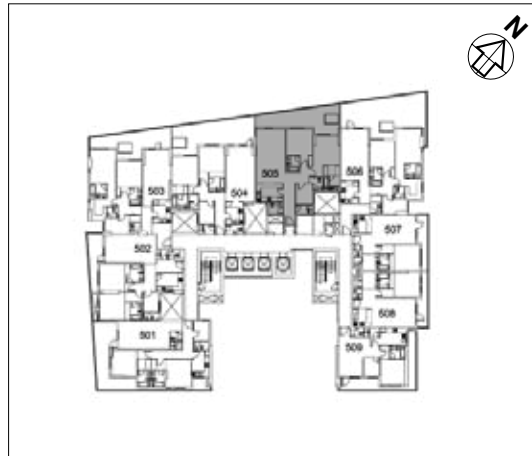


SUITE AREA: 1282.19 (SQ.FT)
BALCONY AREA: 465.32 (SQ.FT)
TOTAL AREA: 1747.51 (SQ.FT)

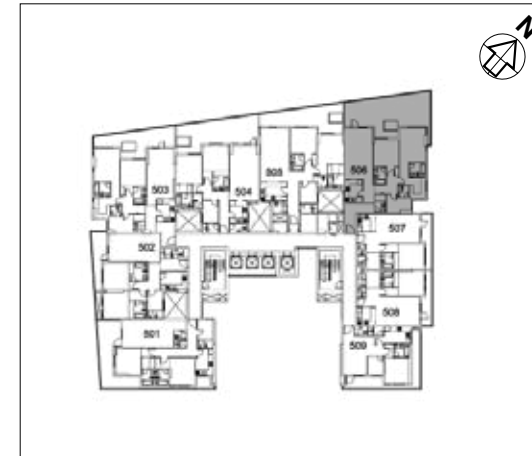
Note: 1. All room dimensions are in imperial and measured to structural elements and exclude wall finishes and construction tolerances. 2. All dimensions have been provided by our consultant architects. 3. All materials dimensions and drawings are approximate. Information subject to change without notice. 4. Actual suite area may vary from the stated area. Drawings not to scale E8E0. The developer reserves the right to make revisions. 5. Calculation of suite area is measured as the area bounded by the center line of demising or party walls separating one unit from another unit, the exterior surface of all exterior walls, and the exterior surface of the corridor wall enclosing and abutting the unit. 6. Calculation of balcony area is measured as the area bounded by the centre lines of demising or party walls separating one unit from another unit, the outermost face of the enclosing guard and the external face of the site abutting the balcony. 7. Furniture is indicative only and excluded from the scope.



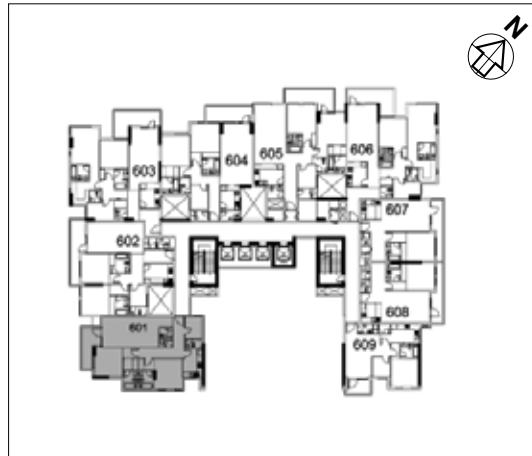
TWO BEDROOM + MAID'S ROOM
UNIT TYPE - 2E
UNIT - 05
LEVEL - 05



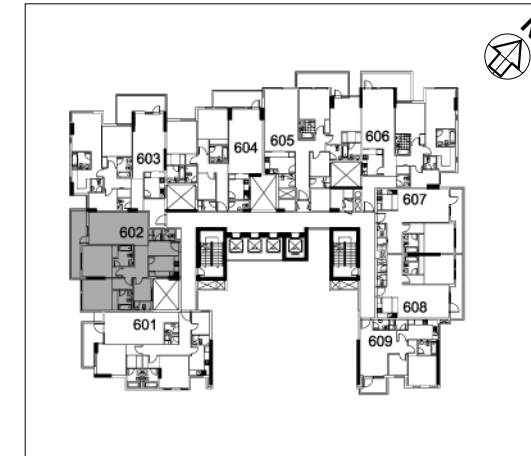
TWO BEDROOM + MAID'S ROOM
UNIT TYPE - 2F
UNIT - 06
LEVEL - 05



TWO BEDROOM + MAID'S ROOM
UNIT TYPE - 2G
UNIT - 01
LEVEL - 06 - 14



TWO BEDROOM + MAID'S ROOM
UNIT TYPE - 2H
UNIT - 02
LEVEL - 06 - 14



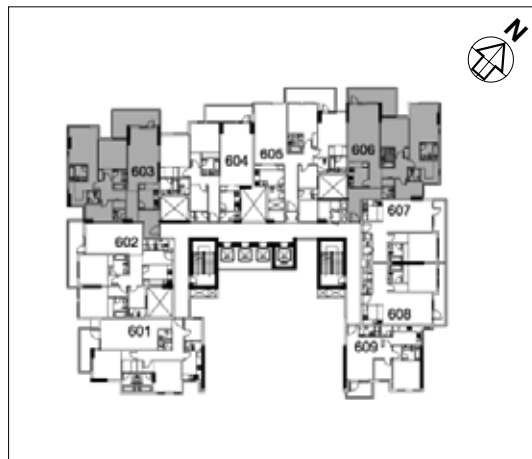
	SUITE AREA:	1262.60 (SQ.FT)
	BALCONY AREA:	116.35 (SQ.FT)
	TOTAL AREA:	1378.95 (SQ.FT)

	SUITE AREA:	1241.18 (SQ.FT)
	BALCONY AREA:	148.00 (SQ.FT)
	TOTAL AREA:	1389.18 (SQ.FT)

Note: 1. All room dimensions are in imperial and measured to structural elements and exclude wall finishes and construction tolerances. 2. All dimensions have been provided by our consultant architects. 3. All materials dimensions and drawings are approximate. Information subject to change without notice. 4. Actual suite area may vary from the stated area. Drawings not to scale E6E0. The developer reserves the right to make revisions. 5. Calculation of suite area is measured as the area bounded by the center line of demising or party walls separating one unit from another unit, the exterior surface of all exterior walls, and the exterior surface of the corridor wall enclosing and abutting the unit. 6. Calculation of balcony area is measured as the area bounded by the centre lines of demising or party walls separating one unit from another unit, the outermost face of the enclosing guard and the external face of the site abutting the balcony. 7. Furniture is indicative only and excluded from the scope.

Note: 1. All room dimensions are in imperial and measured to structural elements and exclude wall finishes and construction tolerances. 2. All dimensions have been provided by our consultant architects. 3. All materials dimensions and drawings are approximate. Information subject to change without notice. 4. Actual suite area may vary from the stated area. Drawings not to scale E8E0. The developer reserves the right to make revisions. 5. Calculation of suite area is measured as the area bounded by the center line of demising or party walls separating one unit from another unit, the exterior surface of all exterior walls, and the exterior surface of the corridor wall enclosing and abutting the unit. 6. Calculation of balcony area is measured as the area bounded by the centre lines of demising or party walls separating one unit from another unit, the outermost face of the enclosing guard and the external face of the site abutting the balcony. 7. Furniture is indicative only and excluded from the scope.

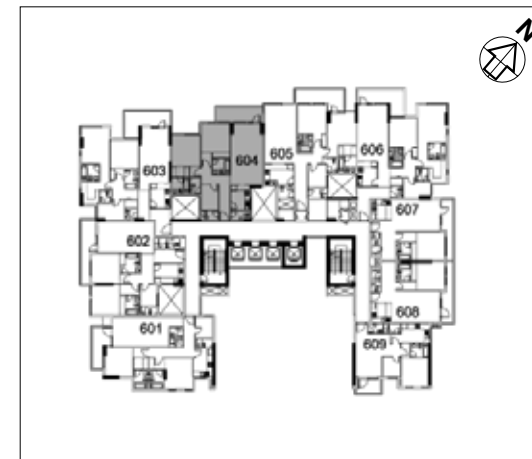
TWO BEDROOM + MAID'S ROOM
UNIT TYPE - 2 I
UNIT - 03 & 06
LEVEL - 06 - 10



SUITE AREA: 1415.34 (SQ.FT)
BALCONY AREA: 159.62 (SQ.FT)
TOTAL AREA: 1574.86 (SQ.FT)

Note: 1. All room dimensions are in imperial and measured to structural elements and exclude wall finishes and construction tolerances. 2. All dimensions have been provided by our consultant architects. 3. All materials dimensions and drawings are approximate. Information subject to change without notice. 4. Actual suite area may vary from the stated area. Drawings not to scale E8EO. The developer reserves the right to make revisions. 5. Calculation of suite area is measured as the area bounded by the center line of demising or party walls separating one unit from another unit, the exterior surface of all exterior walls, and the exterior surface of the corridor wall enclosing and abutting the unit. 6. Calculation of balcony area is measured as the area bounded by the centre lines of demising or party walls separating one unit from another unit, the outermost face of the enclosing guard and the external face of the site abutting the balcony. 7. Furniture is indicative only and excluded from the scope.

TWO BEDROOM + MAID'S ROOM
UNIT TYPE - 2J
UNIT - 04
LEVEL - 06 - 10

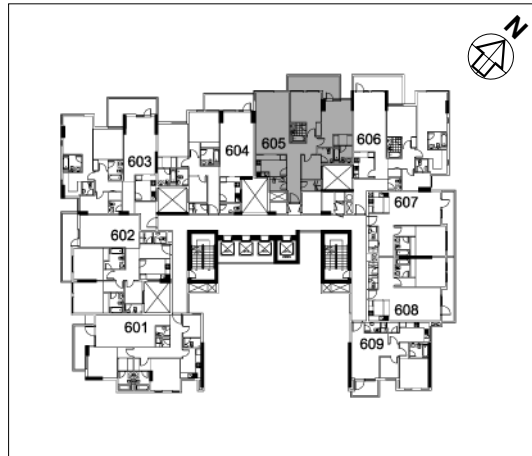


SUITE AREA: 1281.98 (SQ.FT)
BALCONY AREA: 130.78 (SQ.FT)
TOTAL AREA: 1412.76 (SQ.FT)

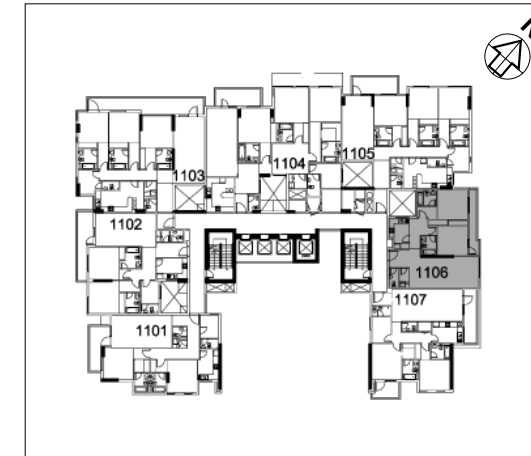
Note: 1. All room dimensions are in imperial and measured to structural elements and exclude wall finishes and construction tolerances. 2. All dimensions have been provided by our consultant architects. 3. All materials dimensions and drawings are approximate. Information subject to change without notice. 4. Actual suite area may vary from the stated area. Drawings not to scale E8EO. The developer reserves the right to make revisions. 5. Calculation of suite area is measured as the area bounded by the center line of demising or party walls separating one unit from another unit, the exterior surface of all exterior walls, and the exterior surface of the corridor wall enclosing and abutting the unit. 6. Calculation of balcony area is measured as the area bounded by the centre lines of demising or party walls separating one unit from another unit, the outermost face of the enclosing guard and the external face of the site abutting the balcony. 7. Furniture is indicative only and excluded from the scope.



TWO BEDROOM + MAID'S ROOM
UNIT TYPE - 2K
UNIT - 05
LEVEL - 06 - 10



TWO BEDROOM
UNIT TYPE - 2L
UNIT - 06
LEVEL - 11 - 14

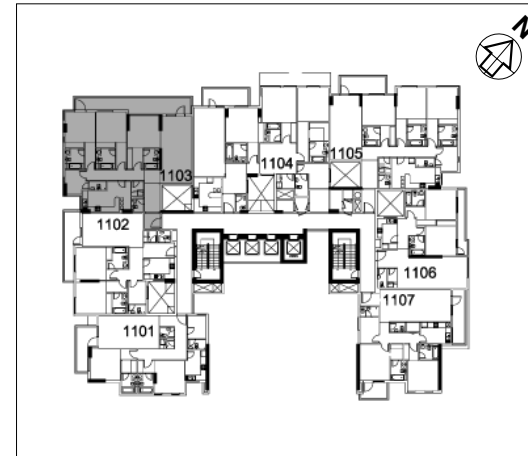




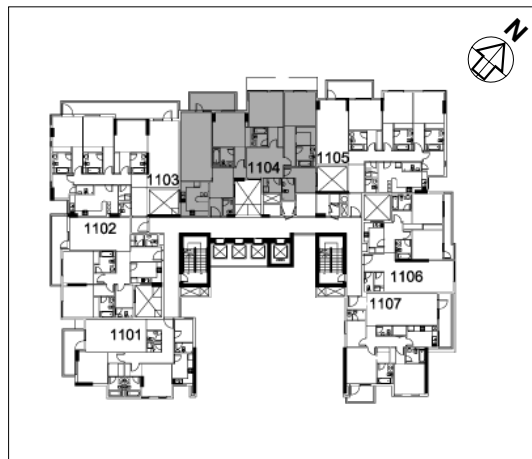
TWO BEDROOM + MAID'S ROOM
UNIT TYPE - 2M
UNIT - 07
LEVEL - 11 - 14



THREE BEDROOM + MAID'S ROOM
UNIT TYPE - 3A
UNIT - 03
LEVEL - 11 - 14

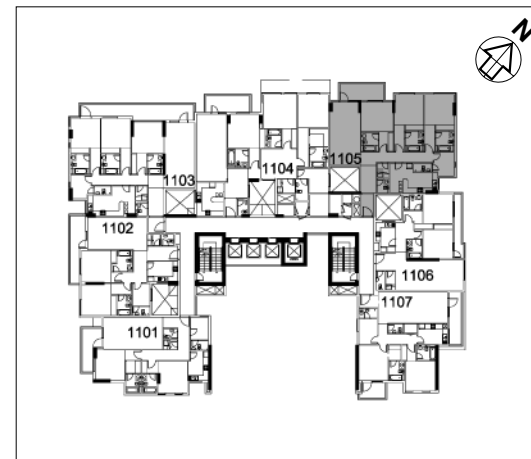


THREE BEDROOM + MAID'S ROOM
UNIT TYPE - 3B
UNIT - 04
LEVEL - 11 - 12



SUITE AREA: 1981.95 (SQ.FT)
BALCONY AREA: 126.58 (SQ.FT)
TOTAL AREA: 2108.53 (SQ.FT)

THREE BEDROOM + MAID'S ROOM
UNIT TYPE - 3C
UNIT - 05
LEVEL - 11 - 14



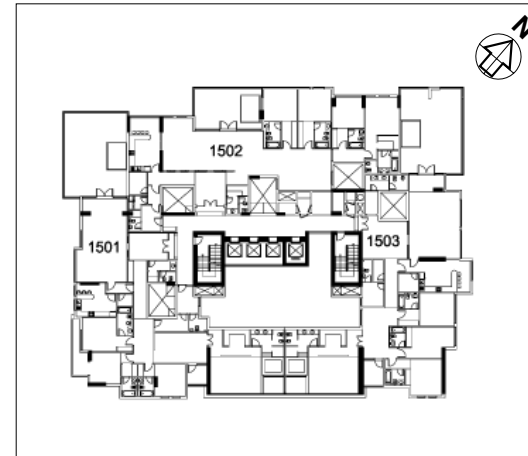
SUITE AREA: 1745.79 (SQ.FT)
BALCONY AREA: 126.58 (SQ.FT)
TOTAL AREA: 1872.37 (SQ.FT)



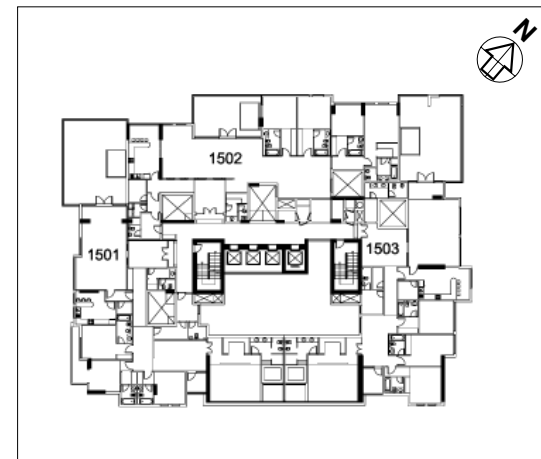
THREE BEDROOM + MAID'S ROOM
UNIT TYPE - 3D
UNIT - 04
LEVELS - 13 - 14



PENTHOUSE - A
UNIT - 1501
LEVEL - 15



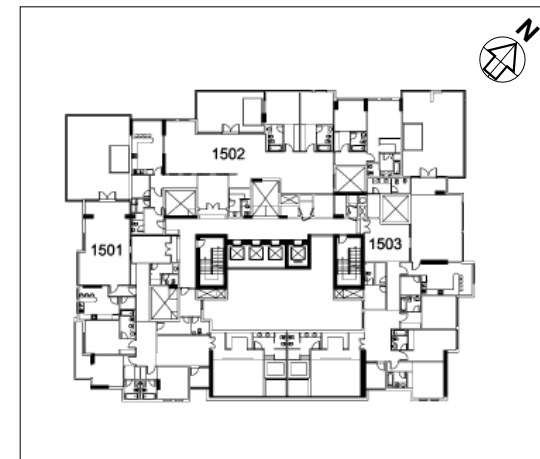
PENTHOUSE - B
UNIT - 1502
LEVEL - 15



SUITE AREA: 3330.03 (SQ.FT)
BALCONY AREA: 404.07 (SQ.FT)
TOTAL AREA: 3734.10 (SQ.FT)

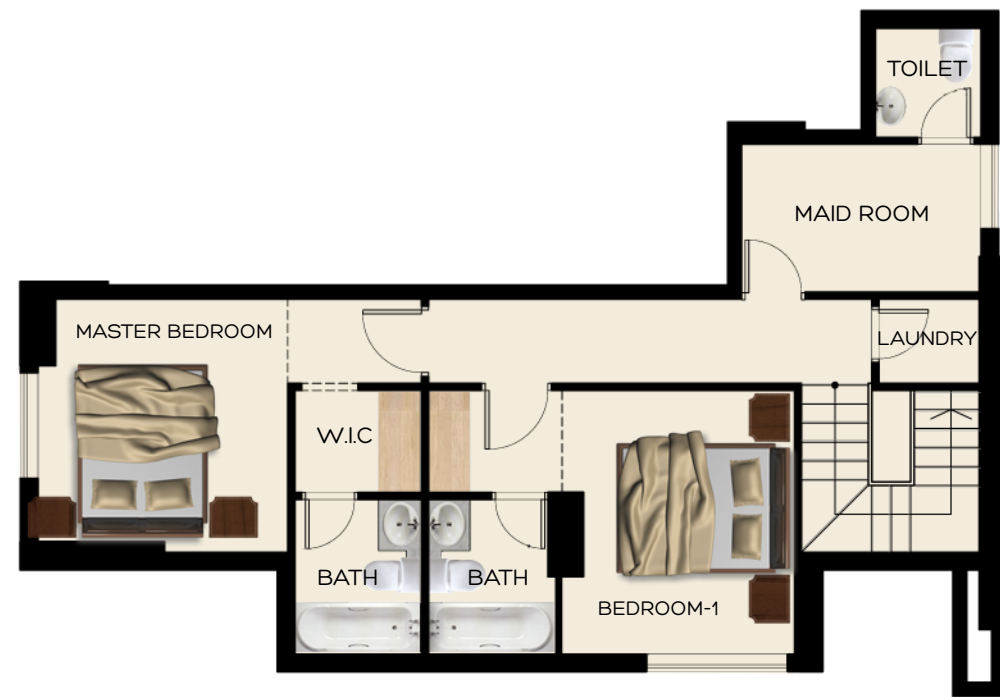
Note: 1. All room dimensions are in imperial and measured to structural elements and exclude wall finishes and construction tolerances. 2. All dimensions have been provided by our consultant architects. 3. All materials dimensions and drawings are approximate. Information subject to change without notice. 4. Actual suite area may vary from the stated area. Drawings not to scale E8EO. The developer reserves the right to make revisions. 5. Calculation of suite area is measured as the area bounded by the center line of demising or party walls separating one unit from another unit, the exterior surface of all exterior walls, and the exterior surface of the corridor wall enclosing and abutting the unit. 6. Calculation of balcony area is measured as the area bounded by the centre lines of demising or party walls separating one unit from another unit, the outermost face of the enclosing guard and the external face of the site abutting the balcony. 7. Furniture is indicative only and excluded from the scope.

PENTHOUSE - C
UNIT - 1503
LEVEL - 15



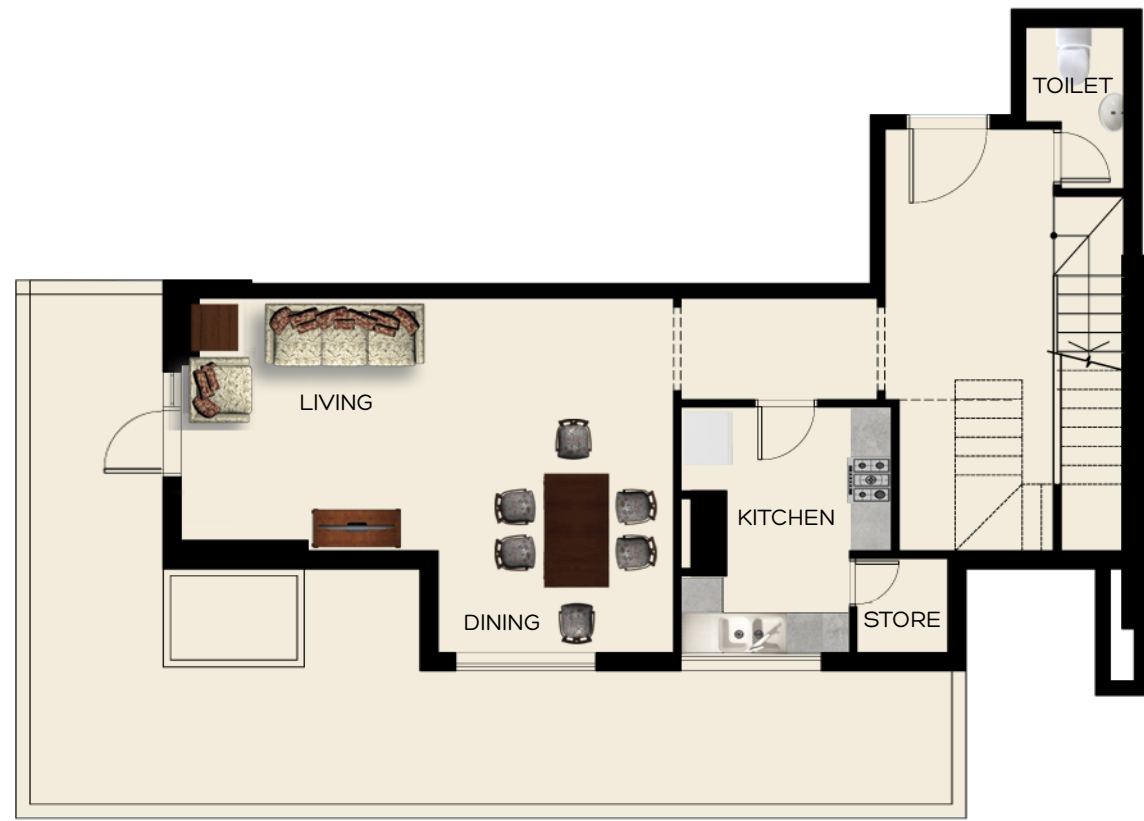
SUITE AREA: 3467.05 (SQ.FT)
BALCONY AREA: 907.39 (SQ.FT)
TOTAL AREA: 4374.44 (SQ.FT)

Note: 1. All room dimensions are in imperial and measured to structural elements and exclude wall finishes and construction tolerances. 2. All dimensions have been provided by our consultant architects. 3. All materials dimensions and drawings are approximate. Information subject to change without notice. 4. Actual suite area may vary from the stated area. Drawings not to scale E8EO. The developer reserves the right to make revisions. 5. Calculation of suite area is measured as the area bounded by the center line of demising or party walls separating one unit from another unit, the exterior surface of all exterior walls, and the exterior surface of the corridor wall enclosing and abutting the unit. 6. Calculation of balcony area is measured as the area bounded by the centre lines of demising or party walls separating one unit from another unit, the outermost face of the enclosing guard and the external face of the site abutting the balcony. 7. Furniture is indicative only and excluded from the scope.



4TH FLOOR PLAN (UPPER)

TWO BEDROOM + MAID'S ROOM
DUPLEX - A
UNIT - 01
LEVEL - 03 - 04

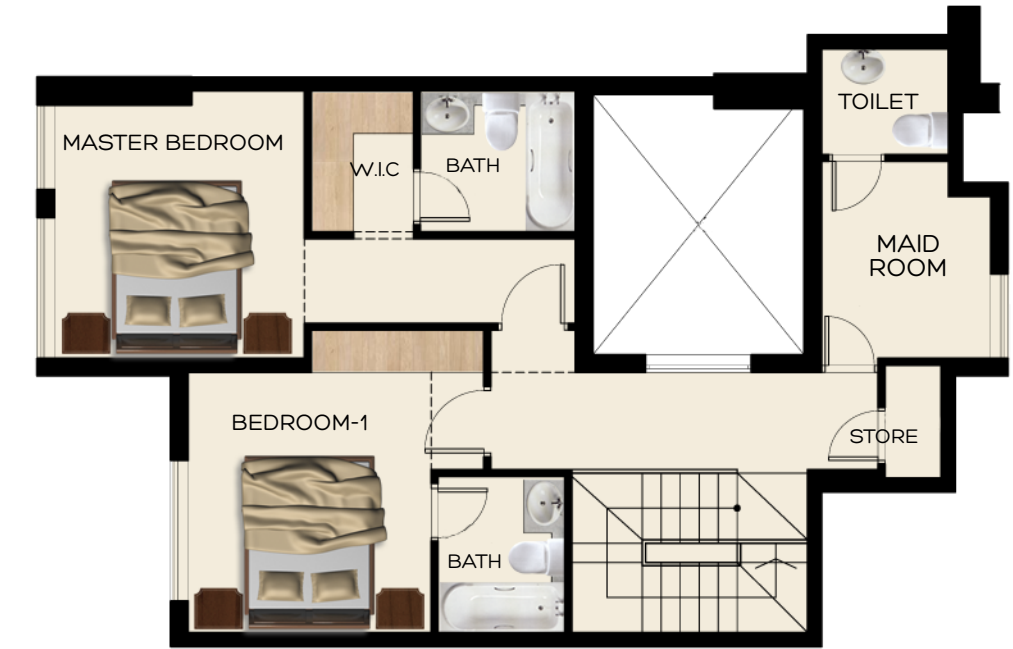


3RD FLOOR PLAN (LOWER)

SUITE AREA:	1563.12 (SQ.FT)
BALCONY AREA:	848.80 (SQ.FT)
TOTAL AREA:	2047.92 (SQ.FT)

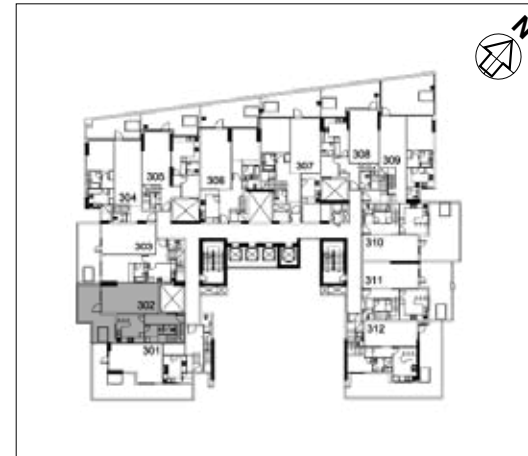


Note: 1. All room dimensions are in imperial and measured to structural elements and exclude wall finishes and construction tolerances. 2. All dimensions have been provided by our consultant architects. 3. All materials dimensions and drawings are approximate. Information subject to change without notice. 4. Actual suite area may vary from the stated area. Drawings not to scale E8EO. The developer reserves the right to make revisions. 5. Calculation of suite area is measured as the area bounded by the center line of demising or party walls separating one unit from another unit, the exterior surface of all exterior walls, and the exterior surface of the corridor wall enclosing and abutting the unit. 6. Calculation of balcony area is measured as the area bounded by the centre lines of demising or party walls separating one unit from another unit, the outermost face of the enclosing guard and the external face of the site abutting the balcony. 7. Furniture is indicative only and excluded from the scope.



4TH FLOOR PLAN (UPPER)

TWO BEDROOM + MAID'S ROOM
DUPLEX - B
UNIT - 02
LEVEL - 03 - 04



3RD FLOOR PLAN (LOWER)

SUITE AREA:	1723.62 (SQ.FT)
BALCONY AREA:	280.93 (SQ.FT)
TOTAL AREA:	2004.55 (SQ.FT)



Note: 1. All room dimensions are in imperial and measured to structural elements and exclude wall finishes and construction tolerances. 2. All dimensions have been provided by our consultant architects. 3. All materials dimensions and drawings are approximate. Information subject to change without notice. 4. Actual suite area may vary from the stated area. Drawings not to scale E8EO. The developer reserves the right to make revisions. 5. Calculation of suite area is measured as the area bounded by the center line of demising or party walls separating one unit from another unit, the exterior surface of all exterior walls, and the exterior surface of the corridor wall enclosing and abutting the unit. 6. Calculation of balcony area is measured as the area bounded by the centre lines of demising or party walls separating one unit from another unit, the outermost face of the enclosing guard and the external face of the site abutting the balcony. 7. Furniture is indicative only and excluded from the scope.



4TH FLOOR PLAN (UPPER)

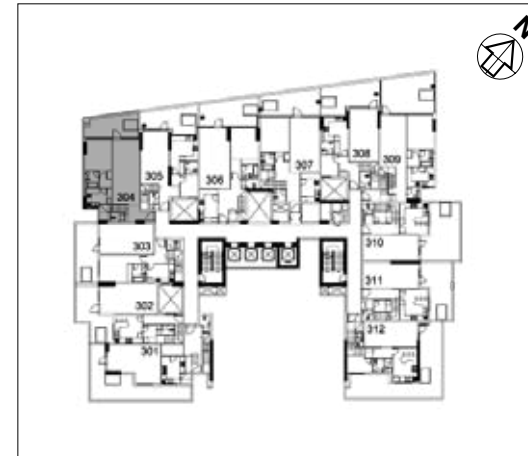
THREE BEDROOM + MAID'S ROOM
DUPLEX - C
UNIT - 03
LEVEL - 03 - 04



3RD FLOOR PLAN (LOWER)

SUITE AREA:	1987.87 (SQ.FT)
BALCONY AREA:	266.94 (SQ.FT)
TOTAL AREA:	2254.81 (SQ.FT)

THREE BEDROOM + MAID'S ROOM
DUPLEX - D
UNIT - 04
LEVEL - 03 - 04



3RD FLOOR PLAN (LOWER)



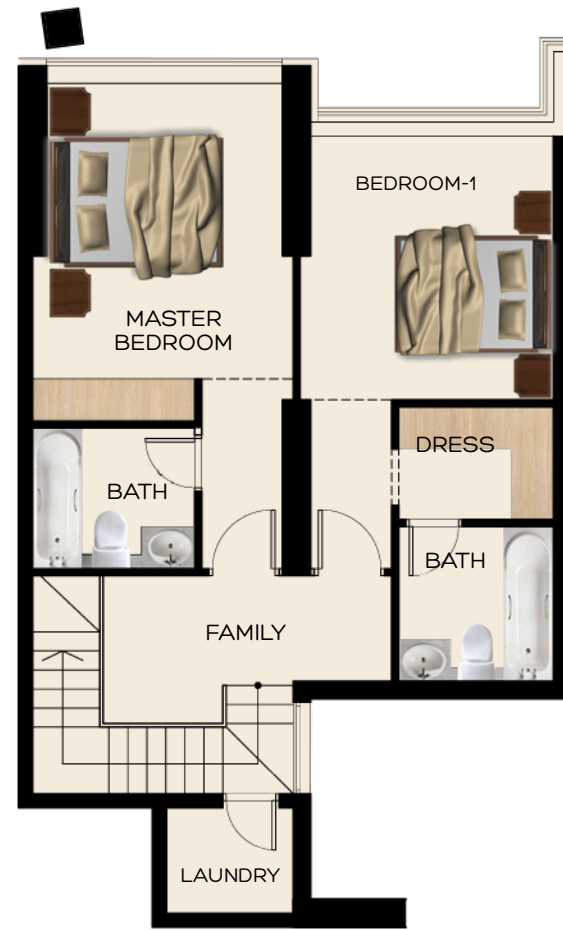
4TH FLOOR PLAN (UPPER)

SUITE AREA:	1762.79 (SQ.FT)
BALCONY AREA:	228.08 (SQ.FT)
TOTAL AREA:	1990.87 (SQ.FT)

TWO BEDROOM + MAID'S ROOM
DUPLEX - E
UNIT - 05
LEVEL - 03 - 04



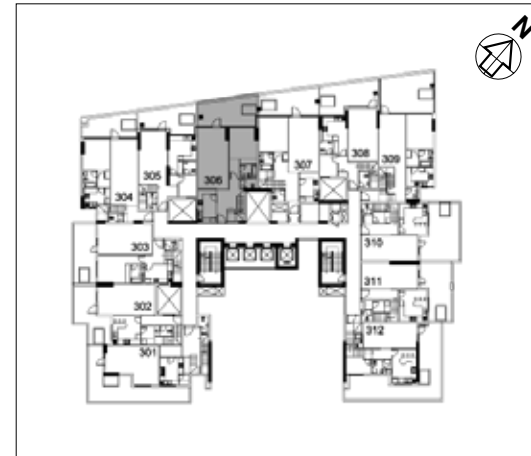
3RD FLOOR PLAN (LOWER)



4TH FLOOR PLAN (UPPER)

SUITE AREA: 1585.30 (SQ.FT)
BALCONY AREA: 263.06 (SQ.FT)
TOTAL AREA: 1848.36 (SQ.FT)

THREE BEDROOM + MAID'S ROOM
DUPLEX - F
UNIT - 06
LEVEL - 03 - 04



3RD FLOOR PLAN (LOWER)



4TH FLOOR PLAN (UPPER)

SUITE AREA: 2165.8 (SQ.FT)
BALCONY AREA: 304.51 (SQ.FT)
TOTAL AREA: 2470.31 (SQ.FT)

THREE BEDROOM + MAID'S ROOM
DUPLEX - G
UNIT - 07
LEVEL - 03 - 04



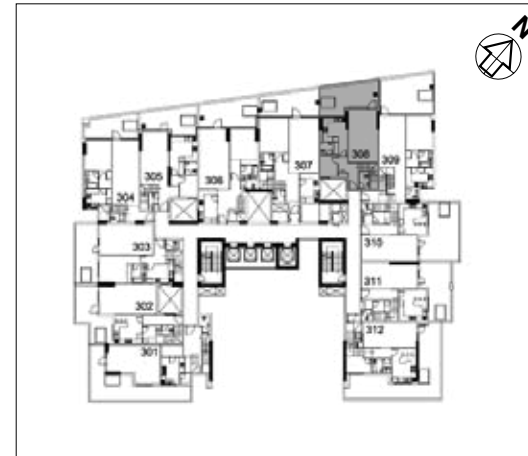
3RD FLOOR PLAN (LOWER)



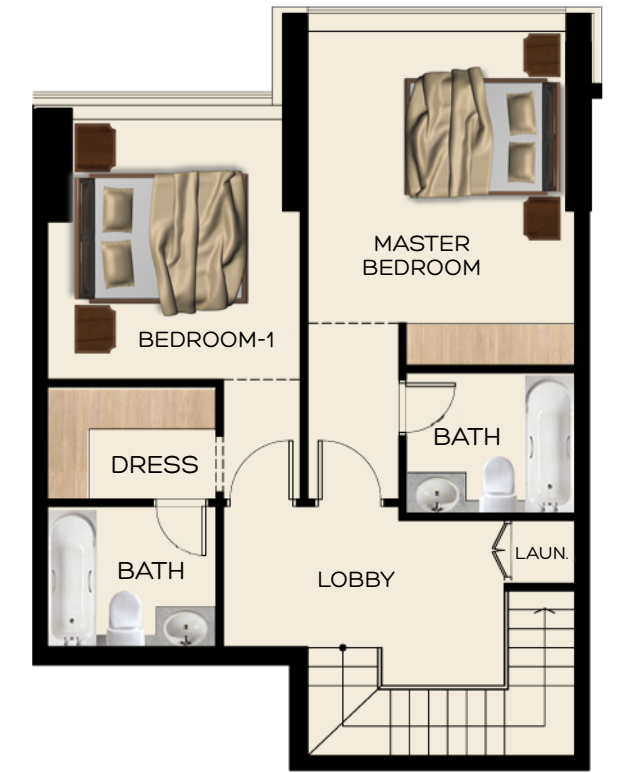
4TH FLOOR PLAN (UPPER)

SUITE AREA: 2172.26 (SQ.FT)
BALCONY AREA: 278.35 (SQ.FT)
TOTAL AREA: 2450.61 (SQ.FT)

TWO BEDROOM + MAID'S ROOM
DUPLEX - H
UNIT - 08
LEVEL - 03 - 04



3RD FLOOR PLAN (LOWER)



4TH FLOOR PLAN (UPPER)

SUITE AREA: 1566.79 (SQ.FT)
BALCONY AREA: 306.34 (SQ.FT)
TOTAL AREA: 1873.13 (SQ.FT)

Note: 1. All room dimensions are in imperial and measured to structural elements and exclude wall finishes and construction tolerances. 2. All dimensions have been provided by our consultant architects. 3. All materials dimensions and drawings are approximate. Information subject to change without notice. 4. Actual suite area may vary from the stated area. Drawings not to scale E8EO. The developer reserves the right to make revisions. 5. Calculation of suite area is measured as the area bounded by the center line of demising or party walls separating one unit from another unit, the exterior surface of all exterior walls, and the exterior surface of the corridor wall enclosing and abutting the unit. 6. Calculation of balcony area is measured as the area bounded by the centre lines of demising or party walls separating one unit from another unit, the outermost face of the enclosing guard and the external face of the site abutting the balcony. 7. Furniture is indicative only and excluded from the scope.

Note: 1. All room dimensions are in imperial and measured to structural elements and exclude wall finishes and construction tolerances. 2. All dimensions have been provided by our consultant architects. 3. All materials dimensions and drawings are approximate. Information subject to change without notice. 4. Actual suite area may vary from the stated area. Drawings not to scale E8EO. The developer reserves the right to make revisions. 5. Calculation of suite area is measured as the area bounded by the center line of demising or party walls separating one unit from another unit, the exterior surface of all exterior walls, and the exterior surface of the corridor wall enclosing and abutting the unit. 6. Calculation of balcony area is measured as the area bounded by the centre lines of demising or party walls separating one unit from another unit, the outermost face of the enclosing guard and the external face of the site abutting the balcony. 7. Furniture is indicative only and excluded from the scope.

THREE BEDROOM + MAID'S ROOM
DUPLEX - I
UNIT - 09
LEVEL - 03 - 04



3RD FLOOR PLAN (LOWER)

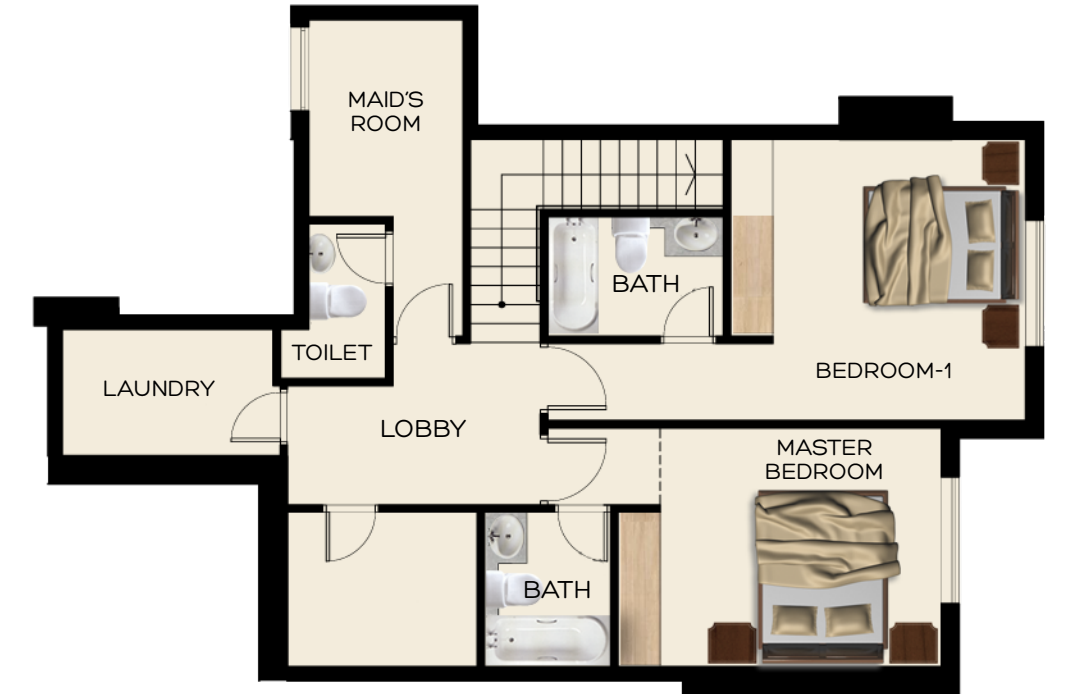
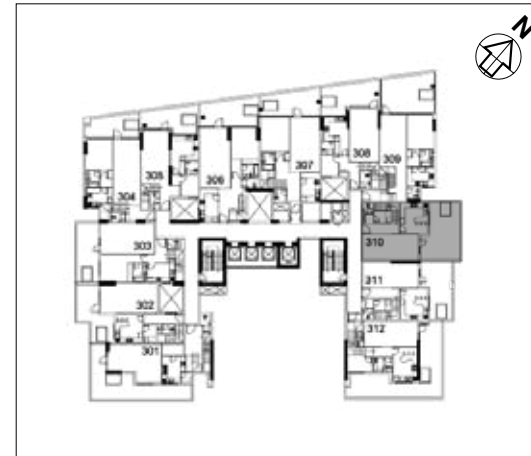


4TH FLOOR PLAN (UPPER)

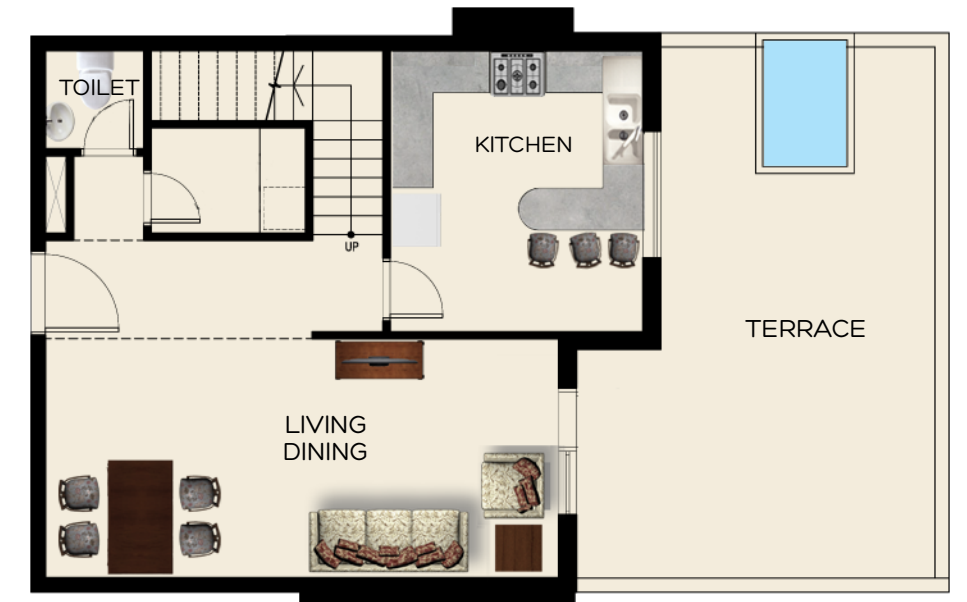
SUITE AREA: 1810.27 (SQ.FT)
BALCONY AREA: 395.78 (SQ.FT)
TOTAL AREA: 2206.05 (SQ.FT)

Note: 1. All room dimensions are in imperial and measured to structural elements and exclude wall finishes and construction tolerances. 2. All dimensions have been provided by our consultant architects. 3. All materials dimensions and drawings are approximate. Information subject to change without notice. 4. Actual suite area may vary from the stated area. Drawings not to scale E8EO. The developer reserves the right to make revisions. 5. Calculation of suite area is measured as the area bounded by the center line of demising or party walls separating one unit from another unit, the exterior surface of all exterior walls, and the exterior surface of the corridor wall enclosing and abutting the unit. 6. Calculation of balcony area is measured as the area bounded by the centre lines of demising or party walls separating one unit from another unit, the outermost face of the enclosing guard and the external face of the site abutting the balcony. 7. Furniture is indicative only and excluded from the scope.

TWO BEDROOM + MAID'S ROOM
DUPLEX - J
UNIT - 10
LEVEL - 03 - 04



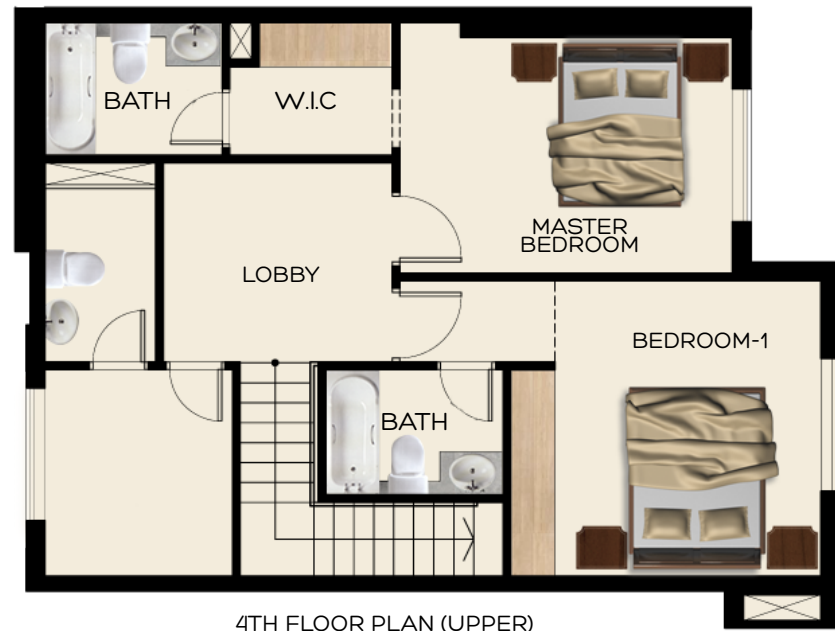
4TH FLOOR PLAN (UPPER)



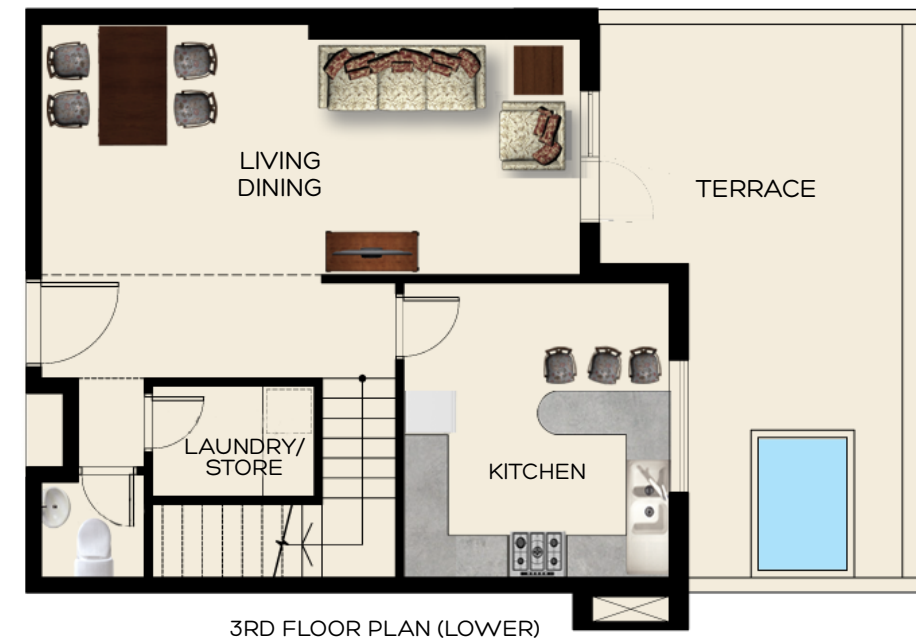
3RD FLOOR PLAN (LOWER)

SUITE AREA: 1667.64 (SQ.FT)
BALCONY AREA: 390.72 (SQ.FT)
TOTAL AREA: 2058.36 (SQ.FT)

Note: 1. All room dimensions are in imperial and measured to structural elements and exclude wall finishes and construction tolerances. 2. All dimensions have been provided by our consultant architects. 3. All materials dimensions and drawings are approximate. Information subject to change without notice. 4. Actual suite area may vary from the stated area. Drawings not to scale E8EO. The developer reserves the right to make revisions. 5. Calculation of suite area is measured as the area bounded by the center line of demising or party walls separating one unit from another unit, the exterior surface of all exterior walls, and the exterior surface of the corridor wall enclosing and abutting the unit. 6. Calculation of balcony area is measured as the area bounded by the centre lines of demising or party walls separating one unit from another unit, the outermost face of the enclosing guard and the external face of the site abutting the balcony. 7. Furniture is indicative only and excluded from the scope.



4TH FLOOR PLAN (UPPER)



3RD FLOOR PLAN (LOWER)

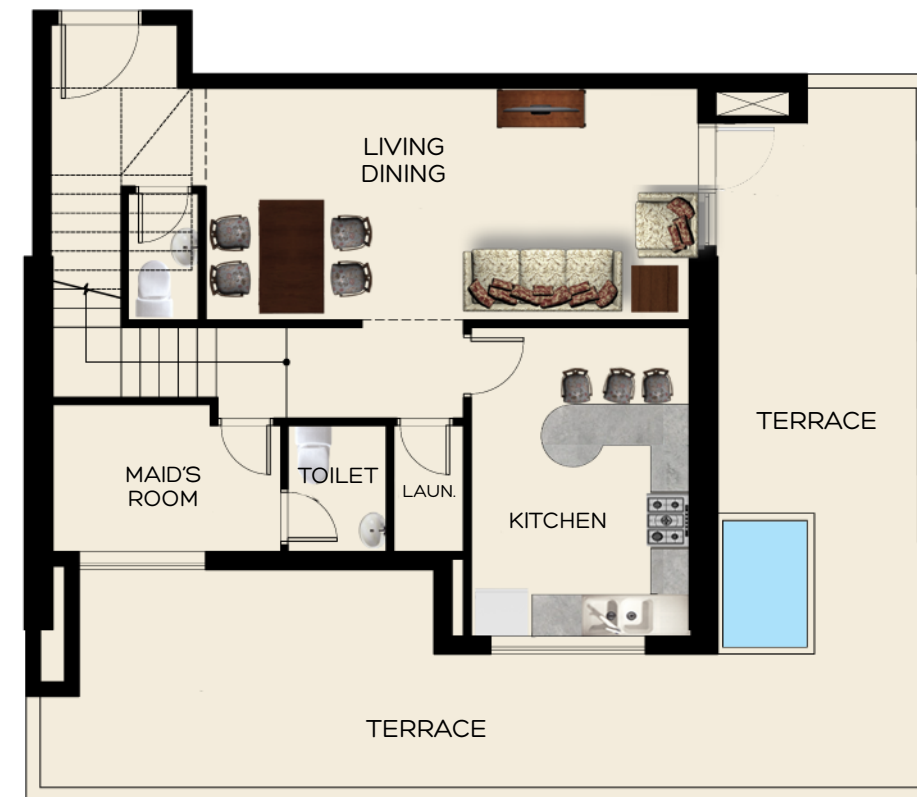
TWO BEDROOM + MAID'S ROOM
DUPLEX - K
UNIT - 11
LEVEL - 03 - 04



SUITE AREA: 1531.26 (SQ.FT)
BALCONY AREA: 301.49 (SQ.FT)
TOTAL AREA: 1832.75 (SQ.FT)



4TH FLOOR PLAN (UPPER)



3RD FLOOR PLAN (LOWER)

TWO BEDROOM + MAID'S ROOM
DUPLEX - L
UNIT - 12
LEVEL - 03 - 04



SUITE AREA: 1583.69 (SQ.FT)
BALCONY AREA: 630.11 (SQ.FT)
TOTAL AREA: 2213.80 (SQ.FT)

Mon Rêve
at burj khalifa district



CREDO INVESTMENTS FZE
P O Box 120168 Dubai United Arab Emirates
Tel +971 4 3355092 Fax +971 4 3353766
info@credouae.com
www.credonewprojects.com
Toll Free: 800 CREDO (27336)

Exclusively Marketed by:

